



Shipston Town Band ensure festive cheer

The Town Band managed to complete all of its Christmas engagements despite the challenges presented by the pandemic. The Christmas Concert at the Townsend Hall where the band was joined by Anne Hume with her Christmas readings was successful, although was sadly attended by a reduced audience.

The weather was kind and the band was able to serenade residents whilst walking around the streets on three nights. In addition, the band played for the Town Carol Service and drew some very appreciative crowds on Christmas Eve when the band played carols in the square. It was great to see so many youngsters playing, directed by their leader Stephanie Wilson. Later in the evening, the band supported carol singers in Luddington and Quinton where the torrential rain caused the carol sheets to disintegrate mid-performance!

On Christmas morning, the weather was much more pleasant when the band, supported by Mayor Ian Cooper, visited Low Furlong, Townsend Hall and Ellen Badger Hospital. During the Community Lunch at the Townsend Hall, the band played outside, before later visiting Kath Roe, widow of the band's former long-serving principal cornet Ken Roe and presenting her with flowers.

It wasn't just Shipston that was treated to some spectacular performances. The band also played in other local towns including Stratford, Moreton-in-Marsh, Chipping Norton, Banbury and Wellesbourne.



Santa's Christmas tour of Shipston courtesy of Rotary

With the support and the generosity of local businesses, Shipston Rotary took Santa in his new sleigh around the town during December where he and his helpers enjoyed greeting many excited children and their families. With six nights and a Saturday town collection, our local community helped to raise over £1,600 for the Rotary Charity Fund – a tremendous achievement considering the Covid restrictions facing the Rotarians.



The sleigh and Santa's grotto, constructed from materials supplied by the Shipston branch of Building & Plumbing Supplies, was fitted on the back of a fully liveried pick-up vehicle supplied by Unity Cross

Roads Garage in Tredington and the sleigh was all lit up with Christmas music playing.

Although Santa was limited in what he could do this year, he still made lots of friends

as he strode majestically ahead of the sleigh waving to the children. Everyone, not just Shipston parents and children, was as generous as ever making their donations to Rotary Charities.

A big thank you to everyone who supported Shipston Rotary in a year of great difficulties for us all. Despite the challenges, thanks to the amazing generosity of the people of Shipston, Shipston Rotary had a very successful lead up to Christmas. The Santa runs, the Tree of Life, the bicycle raffle, the trolley dash and the Saturday town centre collections raised a remarkable total of £3,279.96 for Rotary charities and good causes.





Mayor's column

Happy New Year. As the Town moves forward into 2022, I'd like to thank the community for being diligent over the festive period and helping ensure that the worst effects of the pandemic passed us by.

I'd particularly like to thank all of the community groups and volunteers who did so much to make that time better for other people. The volunteers at the community Christmas lunch gave up their Christmas day as well as the Town Band visiting our nursing homes and hospital to bring some Christmas cheer. To them and the countless others who have helped out during this time, many thanks. For those of you who had a more difficult time, I hope 2022 brings better times.

We enter 2022 with renewed vigour and enthusiasm to pick up on our objectives and to help and support the younger members of our community by engaging with them to determine their needs and planning for their future in the Town. As a council, we are looking to support more projects than ever in 2022-23 to help improve facilities and opportunities for Shipston.

I wish to send my condolences to the family of Linda Cornock who sadly died early in the new year, I echo the words of our Deputy Mayor on Shipston online and recognise what a tragic time the family have had but we all appreciate the important contribution Linda has made to the lives of people who live in Shipston, her yarn bombing remains a lasting tribute to that.

So my message for 2022 is to keep up the good work and engage with your community to continue to make this a better place for us all.

Ian Cooper, Mayor of Shipston

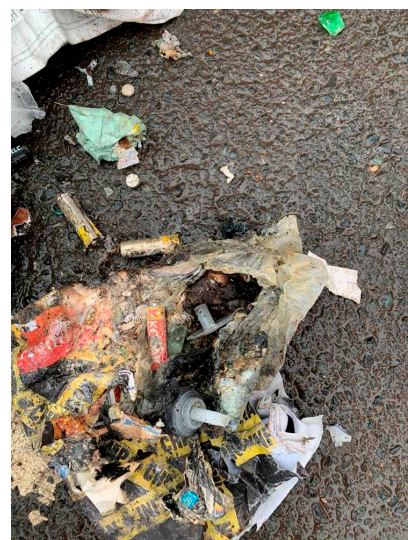
Warning after batteries spark fire

Stratford upon Avon District Council is reminding residents to dispose of batteries properly after a fire occurred in a recycling collection vehicle during January.

The recycling crew were fortunately unharmed, but the incident has prompted concerns about the dangers posed by batteries placed into general waste or recycling bins and mixed with paper, cardboard, plastic or other recyclable materials such as cardboard.

Any batteries placed into general waste will likely be compacted or punctured during transportation to their final waste treatment facility or damaged during handling. When batteries are damaged they can become hot and ignite, potentially resulting in a fire causing damage and a risk to life. Additionally, the resources and chemicals found in batteries such as lead, cadmium, zinc, lithium and mercury can also cause harm to the environment.

Household batteries can be safely disposed of by packaging them in a standard carrier bag and placing it next to or on top of any bin on scheduled collection days. The batteries will then be collected and safely recycled. Recycling centres and shops also offer free-to-use drop off points for batteries.



Local addiction advice

The Rehab Guide is a free service that supports those in need of help for alcohol and drug addiction, directing them to support groups and rehab services.

The site provides many useful resources, including some tailored for specific groups such as students and veterans. In addition, it can help people find local Alcoholics Anonymous (AA) and Narcotics Anonymous (NA) meetings and counsellors to provide one-to-one support.

24/7 free of charge: 02072052845

Warwickshire Website: <https://www.rehabguide.co.uk/addiction-support-groups-services-warwickshire/>

Opportunities for young people to work with the Town Council

The Town Council is exploring the creation of two new part-time roles for local young people to improve youth representation and promote the work of the council.

Youth Champion: To support the efforts of the Youth Working Group and lead activities to engage with local young people and ensure that their needs and desires are factored into council decision making.

Photographer: To capture photos of mayoral engagements and town events for publication on the Council website, social media channels and in the Forum.

Anyone interested in learning more about these exciting opportunities when further information is available should contact the Town Clerk (see page 15).

News from Shipston Town Council's January meeting

Bun Meeting

This informal meeting of Councillors and Staff to discuss future strategic plans for the council has been postponed until all members are comfortable attending face to face meetings. *Following the meeting, this has been confirmed for 9th February.*

South Warwickshire NHS Foundation Trust Community Panel

Cllr Tesh attended the community panel which had been formed as part of the Trust's review of community hospital provision and he emailed all Councillors a copy of the presentation delivered during the session. Members expressed a strong desire for a further briefing from South Warwickshire NHS Foundation Trust on the plans to redevelop the hospital.

Skate Park

Cllr Cox updated members of action following the vandalism of a recently installed new sign at the skate park, including the sourcing of CCTV footage of the incident.

Electric Vehicle Charging

Discussions are underway for up to eight electric vehicle chargers to be installed in Shipston car parks as part of the next tranche of funding.

Norgren Site Tree Felling

The council will request that trees being felled on the former Norgren site be replaced so that there is not a net loss of trees as per the proposed new tree policy.

Ridgeway Land Transfer

Subject to the approval of costs, a firm of solicitors will be appointed to act on behalf of the Council and manage an amendment to the land transfer. Legal costs are being covered by the current landowner.

Corn Mill Meadows Management Plan

The council approved a proposal to develop a management plan for Corn Mill Meadows in partnership with Warwickshire Wildlife Trust. Councillors also backed the principle of applying for local nature reserve status. Work on the plan will commence once costs have been agreed upon.

Gateway Signage

Updated designs have been prepared for the proposed new gateway signage and brown tourism signs. Detailed costs will now be sought before final approval.

Repairs to Old Clark House

Quotes are being sought for repairs and redecoration of the windows and doors at Old Clark House.

Budget

Councillors approved a list of proposed grants and wish list requests for incorporation into the budget, before approving the budget as a whole. Housing developments mean that an increased precept of £276,000 can be raised while reducing individual council taxpayer contributions by a tiny amount.

** CORRECTION **

In the January edition of the Shipston Forum, the report from the Town Council incorrectly attributed two projects to Shipston Rotary instead of Shipston Lions. The General Purposes Working Group is meeting with the Lions to discuss proposals for a Man Shed and sensory garden.

What's On Calendar - February 2022

- 10 **Royal British Legion – Shipston Branch:** Committee Meeting. 7.30pm. Locations TBC.
All members welcome. Contact Alex Black 07789 968733
 - 12 **Townsend Hall:** "Just Take That" Tribute Band, 7.30pm. Details and tickets from <https://www.ticketsource.co.uk/cotswoldevents>.
 - 18 **Shipston Branch of the RBL Social Night:** Every third Friday of the month from 7.30pm in the White Bear Inn. Come and join like-minded people to share a beer, chat/ reminisce and swing the lamp. If you would like to know more, call or message Alex Black on 07789 968733. Please check the noticeboard in the Bury in case Covid affects any of these dates.
- Shipston Music Society:** Charles Matthews. See ad on page 7
- 22 **Shipston U3A:** "Heavenly Beauty, Earthly Delight – Gardens of Paradise" – by Adrian James. See ad below
 - 23 **Shipston Literary Society:** George Eliot by John Burton.
Meetings are held at Newbold Village Hall, 7.30pm.
Visitors welcome £5 ea.
For further information ring Helen Marshall 01789-740773
 - 24 **Local Quaker Meeting for Worship:** St Edmund's Church, last Thursday in the month at 2.30pm, followed by tea/coffee, biscuits & chat
 - 25 **Townsend Hall Concert:** Tom "Spats" Langham. Doors open 7.30pm for 8pm. Fully Licensed Bar. See ad on page 16

SHIPSTON ON STOUR AREA

u3a

Registered Charity No 1170969

TUESDAY 22 FEBRUARY, 2022
2 pm TOWNSEND HALL



**"HEAVENLY BEAUTY,
EARTHLY DELIGHT –
GARDENS OF PARADISE"**
A talk by Adrian James

This talk describes the history, design and symbolism of Persian/Islamic/Mughul style gardens using examples from Iran, Morocco, India, Spain and also the UK. Why these gardens are laid out as they are and how they were spread throughout the world, finally showing wonderful examples of Persian style gardens in various countries as well as in the UK.

Visitors are welcome
Entry including refreshments £2

Shipston Community Christmas

This year saw us take one small step back to normality and it was lovely to (legally) gather back at the hall on Christmas Day. We decided we would give people options and let them decide if they felt comfortable coming to the hall or if they would prefer a home visit. This seemed to work well with a fairly even balance between those that joined us for tea, coffees or a glass of something at the hall, and those that enjoyed a visit from one of our volunteers at home.

We supported around 70 people which included people from Brailes, Tredington, Illmington, Stourton and Great Wolford, and we also delivered around 10 food hampers to families in Shipston struggling at Christmas.

This year our food parcels had a starter and main course from The Castle at Edgehill, delicious desserts from Bex Scott, handmade Christmas cards from Shipston Primary school and gifts donated by the community. Each of our guests also received a bag of Christmas gifts ensuring that everyone that joined us had something to unwrap on Christmas Day. We would like to say a huge thank you to everyone that made these possible. We're always overwhelmed by the generosity displayed by Shipston people.

Lots of the volunteers also come down to join in the fun, sometimes because they find Christmas a bit hard otherwise, so it's a warm, welcoming place for everyone to come for any reason.

This year we also received financial support from the Stour Valley Lions which means we could cover the costs for the

meals and Townsend Hall hire so we didn't need to fundraise for cash donations. We really appreciate these though as it does mean we can continue to run the event year on year so a huge thank you to those that contributed. It is quite expensive to run even with the many donations we receive from you. The Castle at Edgehill gave us a 50% discount on their takeaway meals which was such an amazing and kind thing to do.

The Townsend Hall have had to apply a charge to us for use of the hall of £400 this year, so we will have to raise the necessary funding. The event costs us around £1500 each year. If you feel you would like to make a financial contribution to our cause, then you can contact us on 07498 558149.

We also want to say a huge thank you also to our volunteers and drivers, North Cotswold Brewery, Richard & Lou at The Richard Harvey Collection and the Cotswold Distillery.

Shipston Community Christmas has grown considerably over the last five years and therefore we have been able to expand our support further. Previously we have advertised ourselves as a charity to support people who find Christmas a lonely time. What we really aim to do is help anyone that finds Christmas a struggle and are looking for some help to ease the pain that this time of year can bring. We've got plans for a toy collection to help struggling families, to provide more food hampers, and to help with lunch for anyone that needs it.

Tessa Hince



Shipston Proms

Over the Christmas holidays, with some time on my hands, I was looking through some old Shipston Proms leaflets and became intrigued by the name of a certain band.



Back in 1999, during the first ever Proms festival, a Band called 'The Syringe Babies from the Planet Zyz' unleashed their sound at The George Hotel in Lower Brailes. I wish I had been around to listen to them.

The Syringe Babies were two friends, Mosey N Tinkle and Leni St. Monkey whose mission was to bring the 'varicose culture of Planet Zyz to the firesides of Milton Keynes and other parts of the Earth' with songs about aliens.

They created a concept album around the Vitalab concert held in aid of victims of Alien abuse which was accidentally hit by the Syringe Babies when their craft crashed into the venue. Thankfully no-one was hurt. The interviewer asked what they put this down to, had the audience not arrived at that point? Well, not at any point really, one of the Syringe Babies replied somewhat apologetically.

Their album 'Spice up your Lift' is either very entertaining or mad. In between the songs there are Desert Island type interviews with fictional reporter Ella Wusey talking to the Syringe Babies while they man their tea stall at various locations in Milton Keynes.

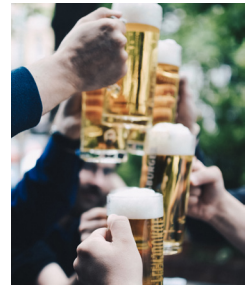
You couldn't make it up.....

It would be great if the Syringe Babies could make another landing in Brailes but for now I will have to make do with the digital version of their 'other worldly' album via Bandcamp. If anyone knows their whereabouts, please let the Shipston Proms know!

In next month's Forum, I will give you some updates on our new ideas for the Proms 2022. Updates can be found as usual on www.shipstonproms.org or on our Facebook page. As always, we would love to hear from anyone who would like to join our small committee as we head towards Shipston Proms 2022, 10th - 25th June.

Save the dates!

Stour Valley Lions are helping the **Shipston Rugby Club** with a **Beer Festival on 11th June 2022**. Pop the date in your diary and look out for further information in future editions of the Forum.



Shipston Home Nursing- 10k Run/Walk at Walton Hall

We are hopeful that this event will take place in May, as with all events in this new world we will advise you of any changes as soon as we can.

The new date is **Sunday May 8th 2022** and the online entry is ready for you to sign up on our website at

<https://www.shipstonhomenursing.co.uk/event/10k-run-walk-2022-at-walton-hall/>



A tribute to Linda Cornock

The Shipston Knitting and Crochet Group are sorry to report the loss of one of their founder members Linda Cornock.

Linda was an active member and attended almost every meeting up until the last couple of years. She was very supportive, encouraging many other group members to try new skills and was a wealth of knowledge.

She was the driving force behind the town yarn bombing and was always coming up with new ideas. Her ability to produce knitted and crocheted items at speed often seemed like she had a magic wand or a team of elves assisting her.

Whilst Linda loved to see the reaction of residents and visitors alike to the yarn bombing and was delighted with all the comments we received, she was a very private person and shunned the limelight. She raised money for her favourite charities and made knitted and crocheted items for them too. During the first lockdown, she gave her yarn a rest and went into mass production of face masks again raising money for local charities.

Whilst Linda is no longer here the group will continue to bring colour to Shipston in the full knowledge that Linda will be monitoring our activities and probably smiling and shaking her head at our efforts.

The group would like to pass their condolences to Linda's family.



Allotments donate show prize money to charity

New Street allotments were awarded 2nd place in the Moreton Show Allotment Competition by the judging panel. The association decided to donate their £75 prize winnings to Shipston First Responders and a cheque was presented on 20th January during a meeting of allotment representatives.



Shipston Amateur Dramatic Society

Treasure Island



a pantomime by Tony Bradford and Tina Webster

'ahoy mateys!'

Please be advised that sadly, and with a heavy heart, we have made the difficult decision to postpone the Pantomime that was due to be performed in February.

The rising number of local COVID cases has caused concerns for cast and audience safety - along with a potential lack of cast members being able to perform and a reduced audience.

However – as the saying goes 'the show must go on' and we are looking at potential dates later in the year – watch this space...

On the path to normal...



It's encouraging to see the hall diary filling up with our regular clubs, societies, and sports bookings getting back up and running. Check out our website for clubs you might be interested in and our diary for available slots if you've got a booking you'd like to make for your own club or event.

On the music front, we're looking forward to welcoming Cotswold Events back on 12th February for their "Just Take That" tribute band booking – tickets available from <https://www.ticketsource.co.uk/cotswoldevents>.

We've also booked some fabulous jazz bands through 2022 – see our website to get the dates in your diary – these are a musical treat, great evenings out, and all proceeds go towards hall maintenance/facilities. First up is "Tom 'Spats' Langham's Hot Fingers" on February 25th – tickets are now available from <https://www.ticketsource.co.uk/townsend-hall> or from A. Clarke Electrical Services in town. Take a look at www.hotfingers.co.uk to whet your appetite!

As a venue that's funded as a charity, we're very grateful for your continued support through your bookings, attendance at clubs/events, and from donations - numbers are still available in our "150 club"; and please consider us when shopping through Amazon Smile or one of the many retailers supporting charities through Easy Funding.

Visit us at www.townsendhall.co.uk to find out more.

St Edmund's

Following an award from Warwickshire County Council's "Green Shoots Fund", St Edmund's Church now has a community bike rack in the front part of the churchyard. Everyone is welcome to lock their bike to one of the hearts. Thanks to Rob Dunn for installing them.



Local Quaker Meetings for Worship

Quaker Meeting in St Edmund's Church, last Thursday in the month at 2.30pm, followed by tea/coffee, biscuits & chat. <https://banburyeveshamquakers.org.uk>

Stour Singers Concert Refund

Clarks Electrics kindly offered to sell tickets for the Stour Singers concert and several people purchased their tickets from the shop. Sadly the concert was cancelled. Anyone wishing to obtain a refund who has not already done so should ring Barabara Divers on 01608 661498.



Shipston Music Society is delighted to announce its first concert for 2022: Charles Matthews*

A piano recital to include Fiona Frank's new suite for piano *Mystical Swan in Blue* and Liszt's transcription for piano of Schubert's *Schwanengesang*.

Charles Matthews has performed for productions by the Royal Opera and Royal Ballet, and recorded music used in various theatres in Spain. Schott Music publish a collection of his compositions for flute and piano. During the months of restricted activity in 2020 and 2021 he has contributed many videos of double bass accompaniments to the String Virtuoso website.

Charles is the Patron of the Shipston Music Society and organist of St Catharine's Church, Chipping Campden, Gloucestershire.



making music

SUPPORTING & CHAMPIONING VOLUNTARY MUSIC

*Subject to any health and safety regulations regarding COVID-19.

Friday 18th February 2022, 7.30pm
Methodist Church | New Street Shipston on Stour
Tickets £8.00 | Students £3.00
SMS members and accompanied children free
New Members always welcome



Hello! We are back for another month and this time you will see an activity with a watering can. We will be calling this your “well-being watering can”. Anyone can experience a range of emotions in any given week. It’s totally normal. But it’s important to develop an understanding of what circumstances might cause difficult feelings, and in turn what we can do to make those feelings a bit more manageable and hopefully find some solutions. This is where your watering can come in! You will see three categories. “What things help fill your watering can?” are any things that you do regularly that enable you to feel happy and healthy. The second category is “what puts holes in your watering can?”. These are any situations that can make you feel sad, worried or angry so understanding them can be helpful in preparing for what you need to do to feel better, or even what to avoid in the future. “What things help to repair the holes in your watering can?”, is a really important one and encourages you to think about all those things that help you to manage or even resolve the difficult emotions you have described. There is a separate worksheet for you to write down your answers. So why not give it a go? It might even be easier to do it with a friend or an adult and they could do it too! Then cut out the pages and keep them in a place where you can refer to them when you need to. We hope it helps and will see you again soon! Nikki.

My well-being watering can

What things fill your watering can?

What things can put holes in your watering can?

What things help you to repair the holes?

Eg playing a sport

Eg an argument with a friend

Eg talking to someone you trust

~ From little acorns do mighty oaks grow ~

My well-being watering can

What things help fill up
your watering can?

What things tend to put holes
in your watering can?

What things help to
repair the holes?



HOMES FOR LOCAL PEOPLE NOW AVAILABLE



Discounted Market homes (plots 12-17) and Local Market homes (plots 1-3) are now available on the Barcheston Reach, London Road development and until 6th April 2022 can only be sold to eligible people who have a local connection* to Shipston-on-Stour parish.

The discounted market homes (plots 12-17) are available at a discounted price of 60% of open market value (on the first sale and all subsequent resales). Until 6th April 2022 these homes can only be sold to someone who has a local connection and who has a Certificate of Eligibility stating that they would be unable to purchase the property at open market value.

To benefit from a local connection you must be able to satisfy any one or more of the following criteria:

- Were born in the parish
- Have been living in the parish for at least 12 months
- Have previously lived in the parish for at least 3 years
- Have been working in the parish for at least the last 12 months for an average of 16 hours or more per week
- Have a mother, father, brother, sister, son or daughter who has been living in the parish for at least the past 3 years

For further information please contact Peter Clarke New Homes on 01608 880099.

*Local connection and eligibility criteria apply on both the first sale and subsequent resales.

Shipston Cycling Club

Robin's Fundraising Festive 500

For most people, the days between Christmas and New Year were a chance to recover from the festivities, relax and recharge their batteries. But for Shipston Cycling Club (SCC) member Robin Hughes, quite the opposite was true.

Just before 3.30am on Tuesday, 28th December, Robin set out from his home with the aim of completing the Rapha Festive 500 challenge within 24 hours.

The Festive 500 is undertaken by cyclists all over the world, albeit with a slightly more realistic (but still ambitious) timescale of completing 500 kilometres in the week between Christmas Eve and New Year's Eve.



On setting himself the goal of 24 hours, Robin said "I wanted a challenge to send the year off, this seemed like a good option and an excellent way of raising some money for charity."

Robin took on the challenge in aid of local charity Cyclists Fighting Cancer and set himself an initial target of £500 - one pound for every kilometre raised. To date, the fundraising total stands at more than £1,500.

The first 80 miles were ridden in torrential rain, and Robin says "It was very cold, hard to see and a little dangerous - I thought we would have to cancel the ride before the sun had risen. At the other end of the day, the sunset wasn't very nice as heading back into the dark for 9 hours didn't seem very fun. It wasn't!"

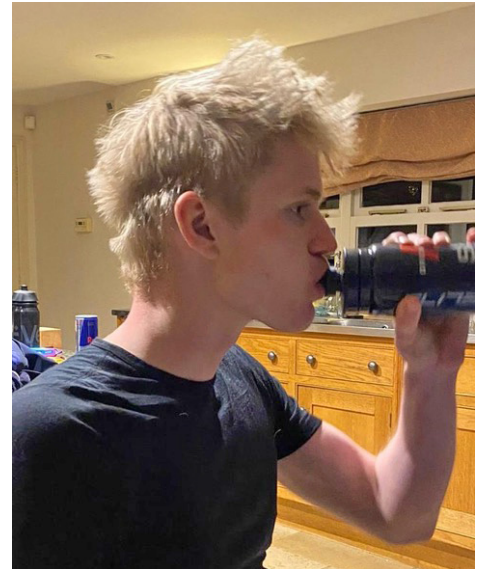
However, support from friends, family and other SCC members helped Robin through the daylight hours. "Every time we saw

someone waving by the side of the road it was a great boost for morale."



Robin completed the challenge after just over 17 and a half hours in the saddle - with much-deserved food breaks meaning he finally climbed off his bike at around 1.45am on Wednesday, 29th December.

Andy Smith, Chairman, SCC said "We're all really proud of Robin's achievement. Our regular Sunday club rides are mostly done



by lunchtime, so to cycle almost round the clock on one of the shortest days of the year is a phenomenal feat of fitness and determination".

Robin's ride in numbers...

- Counties ridden through - 4
- Time spent riding - 17hr36m
- Total distance - 312 miles
- Elevation gain - 10,974 feet
- Estimated calories burned - 11,346

Robin's sponsorship page remains open at <https://www.justgiving.com/fundraising/Robin-Hughes5>



Shipston Primary School



Proposal Statement: Kineton C of E Primary School Joining The Stour Federation Multi Academy Trust

There is increasing direction from both the Department for Education and the Coventry Diocese for schools to convert to Academy Status and join a Multi Academy Trust (MAT). Coventry Diocese has directed its family of schools that they can only join one of seven agreed local MATs, with The Stour Federation being one of those choices. The Governing Board of Kineton C of E Primary School is keen to progress the opportunity to join The Stour Federation Multi Academy Trust.

Acorns Primary School and Shipston-on-Stour Primary School created The Stour Federation Multi Academy Trust in September 2014, with Brailes C of E Primary School joining in August 2021, having worked formally with the MAT since September 2015.

The Stour Federation Trust Board of Directors has resolved to proceed to the next step of the process, which involves Kineton Primary consulting stakeholders, The Stour Federation beginning due diligence and gaining approval from the West Midlands Regional Schools Commissioner.

Kineton Primary is a one-form entry school with a substantive headteacher. I will not be Executive Headteacher of Kineton Primary. I will remain Executive Headteacher of Acorns, Brailes and Shipston, alongside the Heads of School and Senior Leadership Team. My existing duties as Trust Leader (CEO) will expand to include Kineton Primary: I will continue to lead the Executive Team of the Trust, which currently includes the Heads of School and would include the Kineton Headteacher. I will continue to ensure the Trust and all our schools are successful over time in a sustainable way. I will continue to provide high level strategic leadership and management across all aspects of the Trust's activities, ensuring that the Trust provides high quality education for all its pupils through the effective and efficient use of resources and people. I will continue to represent the Trust with a wide range of stakeholders and partners and enable the Trust to fulfil our civic responsibilities. I will continue to be the Accounting Officer for the Trust, responsible for ensuring the Trust meets its statutory and legal requirements.

Vision

The vision of the Stour Federation MAT is to achieve the very best outcomes for children and staff and that by working together, we are stronger. Through partnership and collaboration, the MAT aims to develop a group of inspirational and ethical schools which instil ambition and determination in children and staff, open their minds, widen their horizons and equip them to succeed in a challenging world.

The formal collaboration of a multi academy trust is a knowledge-building structure which allows for deep collaboration and the potentiality for improving the quality of education. With a Trust as a legal entity, collaboration is therefore hardwired, not optional. Our Trust with schools working together require close geographical proximity.

The Stour Federation believes that to be a high-performing multi academy trust schools should be aligned around a common model of school improvement; schools that are the most harmonious are the highest performing, whilst respecting

earned autonomy - a powerful caveat for individual schools to be able to innovate and showcase specific strengths and areas of interest.

Kineton Primary is aligned with the schools in The Stour Federation in terms of our values, curricula, pedagogical principles and professional development for staff.

In order to provide exciting world class, evidence-based opportunities for all our children, the MAT places children at the centre of all it does, maintaining a climate where excellence flourishes as a result of outstanding leadership, brilliant teaching and high quality learning. It aims to:

- Expand our central resource to manage school finances, combining shared services such as payroll, insurance and tendering, and bringing together a team to deliver services including legal, HR, IT, utilities, buildings and grounds work as well as purchasing. This team will achieve efficiencies and reduce burdens on the leadership team, so they can focus on education.
- Provide effective strategic Trust governance, working openly and collaboratively with Local Academy Councils to enable successful local leaders to continue to deliver effective school improvement.

Building on Success

- All four schools are strong and successful. The advantages of expanding a locally established educational partnership together is one that we feel will provide even more opportunities for our children.
- All four schools are distinctly unique and individual and we wish to maintain and strengthen this through formalising and continuing to develop our own local partnership rather than an externally controlled one.
- All four schools already work through the local consortium of schools; this is an opportunity to develop collaboration further.

School Improvement

A key aspect of the drive to be part of a MAT nationally is the focus on school improvement and the significantly increased capacity that this gives to schools to support each other. All partner schools have a strong record over time, high standards and good performance, which will only be enhanced further through partnership and formal collaboration.

Financial Security

With the ongoing pressures on school funding, the cost savings of schools maximising economies of scale together is another significant advantage of working together. We have a responsibility to get value for money for every penny spent in school.

This is an exciting time for our Trust.



Shipston High School

Once again, the year has started for Shipston High School, like all households and organisations, adapting to Covid 19 related measures. Students and staff have been wearing masks in internal spaces, including classrooms, as we all work together to mitigate the risks of the virus and therefore prioritise school activities.

Students have continued to impress with their flexibility and readiness to adapt. Most importantly, activities around school are focused on learning and ambition with purposeful lessons and positive engagement with extracurricular activities. Inter-house sports activities are being enjoyed by all year groups, and it is great to see so many students participating for the sheer enjoyment of shared activity. We have also continued to invite guest speakers to address students; this is frequently virtual via video link, but no less interesting or engaging, such as recent presentations on Careers and Science for GCSE students.

To help exam candidates know what lies ahead, we run mock examinations in December. In recent years we have established a mock exam results day in January, reflecting the real results day which occurs in August. Just as Students will experience in the summer, results were published together and collected by students from the school hall at an appointed time. This created a real sense of occasion and enabled students to feel the same



anticipation that accompanies the final results.

The mock results publication was a really positive event, allowing students to celebrate their successes and plan for any areas of improvement. There was much to celebrate with many securing grades that are encouraging for the final results. All agreed that the process helped provide the right focus and sense of purpose for the final weeks of preparation. GCSEs begin in May, and I know all of Year 11 will be pushing themselves to equal or exceed their mock results. Secondary schools are expecting to sit traditional examinations this year, and our students are getting ready for the challenge.

The example that students set for each other is one of the strengths of Shipston High School. A real pleasure this term has been noting how students are supporting each other around school, respecting the school values of learning, ambition, respect and achievement. The school is successful because the students are at the centre of our work, both academically and pastorally.

Next month, many families will find out which secondary school their children will attend in the coming Autumn; I am sure that children coming to Shipston High in September 2022 will be eager to add their own contribution to our growing community and we look forward to meeting you in person when circumstances allow in 2022.

Gavin Saunders, Headteacher

Shipston Medical Centre

Medical Centre t: 01608 661845

What is the Coventry and Warwickshire Integrated Care Record (ICR)?

The Integrated Care Record is a way of bringing together all your separate records from the different organisations involved in your health and social care.

Who does this affect?

Anyone aged 18 or over and registered with a GP practice in Coventry and Warwickshire, Birmingham and Solihull or Herefordshire and Worcestershire will be included.

Who'll get to see your information – & why?

Health and social care professionals will be able to see your records through the Coventry and Warwickshire Integrated Care Record.

This will mean:

- not having to repeat your details every time you need care
- better and, potentially, faster treatment as the professionals
- caring for you will be able to quickly see your records
- not having to explain your social care support to health professionals
- clinicians being able to see what medications you're taking, what you've taken in the past, and if you have any allergies – making your treatment safer.

The staff at all of the organisations below must follow the law on keeping your information confidential. Each time they look at your records this will be recorded to make sure they're only looking at the right information, for the right reasons.

The organisations currently taking part in the programme are:

- GP practices within Coventry and Warwickshire
- Coventry and Warwickshire Partnership NHS Trust
- University Hospitals Coventry and Warwickshire NHS Trust
- George Eliot Hospital NHS Trust
- South Warwickshire NHS Foundation Trust
- Coventry City Council
- Warwickshire County Council
- West Midlands Ambulance Service University NHS Foundation Trust

Health and social care organisations in the neighbouring areas of Birmingham and Solihull and Herefordshire and Worcestershire will also be able to view your information if necessary for care you receive there.

What will they be able to see?

The first phase of the Integrated Care Record will allow health and social care professionals to see appropriate details

contained in:

- your GP practice medical record
- information from secondary care, including hospitals, mental health and community services.



Shipston Medical Centre

Being able to see this information will help them give you the best care as quickly as possible without having to make phone calls or wait for other organisations to forward details.

The ICR will bring together information from GPs and allow it to be seen by health professionals in hospitals, including Emergency Departments. In time information from community and social care, ambulance and NHS 111 services will be added.

What happens next?

The change is taking place automatically as we now switch on the Integrated Care Record across the organisations taking part in the programme.

You have a right to object at any time – it's your decision. If you do want to object, or would like more information access the website at

www.happyhealthylives.uk/our-priorities/digital-transformation/integrated-care-record/ or call 0345 6461163.

District Council update

There are at least two noticeable events that will take place in 2022 that will have lasting impacts on the residents of Shipston. The first affects Stratford District as a whole as well as Shipston. The request to the Secretary of State for his consent to the creation of a South Warwickshire District Council through the amalgamation of Stratford and Warwick District Councils was submitted before Christmas. It is hoped that there might be at least an indication of his likely response in the first half of this year and it is hoped that the new authority will be operational from April 2024.



The second noticeable event will be the outcome of the planning application for the replacement for the Ellen Badger Hospital and the outcome of the bed review undertaken by the South Warwickshire NHS Foundation Trust (SWFT). The complexity of the issues to be taken into account with this application is demonstrated by the number of individuals and organizations that have had to be consulted. The views and requirements of twenty statutory consultees alone have had to be taken into consideration.

Whilst planning consent is anticipated to be granted by Stratford District Council in the very near future, the precise nature and scale of provision of services in the replacement hospital are dependent on the outcome of SWFT's review of South Warwickshire's current facilities, particularly in the light of the impact of COVID-19 on medical services generally. We will all want to ensure that the new hospital, medical centre and well-being centre, including a café and community park, enable as much medical care as practicable to be provided locally to minimise the need for Shipston residents to have to travel to either Warwick or Coventry. Whilst concern about the future structure of the District Council may not be at the top of every Shipston resident's list of local concerns, the future of the provision of health care in Shipston very much is. This year will be a very important year for decisions that will affect us all.

There is another perpetual issue in Shipston – how to reduce the number of motorists speeding through Shipston. Department for Transport (DfT) figures for the quarter to September 2021 show that nationally 52% of drivers exceeded the 30mph limit. Other recent DfT research shows that, under free-flow conditions, 87% of car drivers exceeded the speed limit in 20mph zones. Excessive speed is a problem that risks residents' safety in Shipston and all of its surrounding villages. The Shipston Community Speedwatch Group plays a very useful role in drawing attention to speeding drivers. Supported by the '20's Plenty for Us' campaign, the possibility has also been raised that 20mph areas should be introduced to parts of Shipston. I would be interested to learn what residents generally think of this idea. Please drop me an email if you have a view.

As ever, if you have any issues with which you think I might be able to help, please contact me. I am always keen to hear from the people I represent.

Trevor Harvey, District Councillor, Shipston North
01608 682415 | trevor.harvey@stratford-dc.gov.uk

County Council update

Happy New Year Shipston!

A few facts, a bit of opinion and some advice – pretty much sums me and this column up!



Incidents of domestic violence have increased over the last two years. I have been asked how people who are concerned about safeguarding of children or adults can report their worries.

If you hear or see something which worries you then please do take it seriously. Here are some of the numbers for you to use.

MASH (multi agency safeguarding hub) – Urgent Adult or child safeguarding concerns in Warwickshire –
01926 414144

Adult social care –
01926 412080

Childline - (for under 19's)
0800 1111

NSPCC helpline (for adults to report concerns) –
0800 8005 000

Crimestoppers –
0800 555111. 111 or 999

I hope this helps!

A bit of opinion: whilst I know that parts of Shipston could be 20mph limited I am worried about the potential pollution and CO2 emissions. This is also even more true of idling cars – which produce many more particulates than when moving. The obvious road safety implications of 20mph zones are indisputable. The recent speed survey, funded from my County Councillor budget, recorded some outrageous speeds on the London Road. Another survey is planned for the Stratford Road end of town – you've been warned!

Slightly contentious advice (!) – when it's cold I wrap up and eat hot food. I don't put my heating on in the day and have been known to wear a hat indoors. Not only does it save money – but it actually reduces my CO2 emissions as well. If you come round you will always be offered a rug!

Definitely thinking that I need to restart my surgery in the spring – now we are coming out of restrictions I don't see why not. Maybe not every Thursday – other people keep putting things in my diary – I will put it on the Shipston noticeboard.

Get in touch any time and I will do my best to get back to you.

Jo Barker, County Councillor, Shipston
07748 968712 | jobarker@warwickshire.gov.uk

Your Town Councillors


Ian Cooper, Mayor
Finance Working Group Chair

t: 01608 663785

 e: ian.cooper@shipstontowncouncil.org

Marianne Westwood, Deputy Mayor

t: 01608 662223

 e: marianne.westwood@shipstontowncouncil.org

Ronnie Murphy

t: 01608 664518

 e: c/o clerk@shipstononline.org

Paul Tesh
Planning Committee Chair

t: 07711 433566

 e: paul.tesh@shipstontowncouncil.org

John Dinnie

t: 01608 664590

 e: john.dinnie@shipstontowncouncil.org

Jo Barker

t: 07748 968712

 e: jo.barker@stratford-dc.gov.uk (for town and district matters)

Peter Cox
General Purposes Working Group Chair

t: 07973 442552

 e: peter.cox@shipstontowncouncil.org

Peter White
Communications Working Group Chair

t: 07792 507168

 e: peter.white@shipstontowncouncil.org

Gerry Kelly
Planning Committee Vice Chair

t: 07471 687720

 e: gerry.kelly@shipstontowncouncil.org

Tim Shickle

 e: tim.shickle@shipstontowncouncil.org

Tony Booth

 e: tony.booth@shipstontowncouncil.org

Shirley Madams

 e: shirley.madams@shipstontowncouncil.org

Vacancy

Useful Contacts

Community Links Transport	01789 264491
Shipston Library:	0300 5558171
- 24/7 renewal line	01926 499273
Highways customer services	01926 412515
Severn Trent Emergency Line:	0800 7834444
Shipston Volunteer Transport Scheme	01608 663122
Shipston Leisure Centre	01608 662354
Shipston Medical Centre	01608 661845
- Out of hours	111
Shipston Forum	01295 788655
Shipston Link (local transport)	01386 593446
Shipston Recycling Centre	01926 412593
Stratford District Council	01789 267575
Townsend Hall	07514 704057
Warwickshire County Council	01926 410410
UCHW Hospital	024 7696 4000
Warwick Hospital	01926 495321
Local police (non emergency)	101
Shipston Police Safer Neighbourhood Team:	01789 444670
shipston.snt@warwickshire.pnn.police.uk	
Churches of Shipston:	
Stour Valley Baptist	01608 664876
Our Lady & St Michael	01608 685259
St Edmund's	01608 661210
Methodist Church	01295 257193

Shipston-on-Stour Town Council

New Clark House, West Street, Shipston-on-Stour, CV36 4HD

Town Clerk

 t: 01608 662180 e: clerk@shipstononline.org
County Council Contact:
Councillor Jo Barker

 t: 07748 968712 e: jobarker@warwickshire.gov.uk
District Council Contacts:
Councillor Jo Barker (Shipston South)

t: 07748 968712

 e: jo.barker@stratford-dc.gov.uk
Councillor Trevor Harvey (Shipston North)

t: 07969 167720

 e: trevor.harvey@stratford-dc.gov.uk


Something exciting to share?

If you have a story that's relevant to Shipston residents, please contact the editor, Chris Rowland on 01295 788655 or email: forum@shipstononline.org

To request posts on the council's Facebook and Twitter feeds, contact Peter White (details above).

Forum copy deadline:
Second Monday of the month

– but the sooner you can notify the editor of a potential story the better.

The Shipston Forum is produced monthly by the Town Council.

While every effort is made to ensure information is accurate, the Town Council and its contractors do not accept responsibility for material submitted by readers or third parties and does not endorse any organisation or event publicised. Contributions may be edited to fit available space.

THI TOWNSEND HALL

Sheep Street, Shipston-on-Stour,
Warwickshire. CV36 4PE

Tom "Spats" Langham

HOT
FINGERS

Friday 25th February 2022
Doors Open 19:30 for 20:00

Fully Licensed Bar

Tickets £10 from A. Clarke Electrical Services, 01608-661394, or visit
ticketsource.co.uk or townsendhall.co.uk for online booking