



## Ali Henderson



We are all devastated to hear the very sad news that Alison Henderson has lost her long battle with illness. Alison and Richard moved to Shipston in 2007 in the middle of our floods and she had to spend the first few months of her time here living in Great Wolford whilst her house dried out. Once firmly in the Town, she soon began to get involved in all things Shipston and joined the Town Council as a wise (not so old) sage. She was particularly adept at helping with the finances due to her corporate finance background, but also through a very eloquent vocabulary help extensively with our communications. Due to issues abroad she had to stand down from the council in 2010, but once that was resolved came back to help out again. It was in 2017 when deputy Mayor that illness once again forced her to stand down, which is a tremendous shame as Shipston would have surely benefited from her charismatic nature as Mayor.

Through the pandemic and after, Ali and Richard remained active in

the town. She will be fondly remembered by all the Town Councillors past and present who were on the council with her, and severely missed by Shipston. Ali Henderson, one of our true characters.

## Shipston Town Council Secures Future of Enterprise Centre

After more than a year of negotiating, Shipston Town Council has finally managed to complete the purchase of the Shipston Enterprise Centre (formerly Norgren Hub) from IMI plc. Cllr, Ian Cooper said that whilst it is great news that the Town Council has managed to secure the long term future of this asset for our local community, we should not expect to see any changes in the way the Shipston Enterprise Centre is run in the short or medium term. The council decision to purchase the site was to ensure the long term retention of the land and building for community use and to rule out further residential development on the site. Mayor Marianne Westwood said "we are all delighted that the Town Council has secured this purchase and in doing so ensures that the Enterprise Centre and sports facilities will be retained for use by our local community. We thank everyone that has been involved in the running of the centre over many years and hope that this continues". The current businesses and organisations that operate from the Enterprise Centre are not expected to be impacted by this change of ownership.

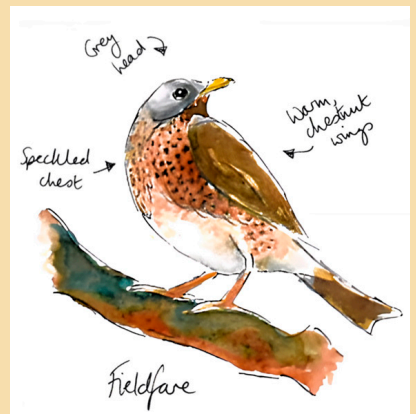
## An Act of Kindness

Judith Legg had recently slipped over on ice in Tileman's Lane, however the bus driver of route number 51 helped her on board and kindly drove her back to Shipston Lodge. Judith would like to express her thanks.

## Cornmill Meadows - February update

Let me tell you about a little bird. Or perhaps I should say a medium-sized bird. Think of a blackbird and then make its head grey, give it a speckled chest and turn its wings a nice, warm brown and, lo and behold, you have a fieldfare.

We're very lucky in Shipston that fieldfares visit us every winter. They absolutely love our hedgerows and trees! So much so that they travel thousands of miles to us every October and stay all the way until March. You'll probably hear them before you see them because these birds are incredibly noisy. That blackbird we just reworked? Imagine it yapping and that's your fieldfare!



I remember seeing a small flock of fieldfares near Cornmill Meadows back in November. As I watched, I thought about how amazing this wild space is for them and our other winter birds. Like their redwing cousins who also visit us, or the long-tailed tits that flit through the hedgerows in their family groups. They're much easier to spot through the bare branches in winter. As are Shipston's great spotted woodpeckers – I always smile when I catch that bright red rump hopping from tree to tree.

Work continues to make the meadow into the wild haven that we know it can be. Not just for birds, but for our mammals and insects too. A place where our winter residents and visitors can continue to thrive. Where our bees can sip nectar to their hearts' content and where our butterflies can flourish in the hedgerows.

Volunteers are crucial to the success of the meadow and I can't wait to get stuck in with this work in 2023. And it isn't too late to get involved too – long-time resident? New to the area? Young? Old? Everyone welcome! So come join us!

Written by Emily Cannon (volunteer). If you're interested in volunteering too, please contact Hilary Kelly ([hilarykelly169@btinternet.com](mailto:hilarykelly169@btinternet.com)) for more information. A warm thank you to those who have already volunteered.



## Mayor's column

Hello Shipston.

Happy New Year!

2023 is looking quite exciting. We have some projects coming together that we know will benefit the town now and in the future.

We had some sad news at the beginning of the year though with the passing of Ali Henderson. She was someone that always made me smile. She was very kind to me as a new and inexperienced Councillor. I got married just after joining the council and Ali gave me some beautiful fabric hearts that I treasure. I can see them here as I type this. I send deepest condolences to Richard and their family.

## Shipston's Got Talent

Put the dates in your Diary. Auditions on the 9th and 10th of March at 7pm in St Edmunds. To book an audition check the town council website.

The tickets for the concert will be £10 and available at the door.

I always find the winter months need something to keep me going and this is a chance to showcase all the talent we have in our community. I'm looking forward to seeing all the performances. Jugglers, acrobats, comedians and impressionists dig out your acts and costumes and come and show us all you can do!

This is in aid of the Shipston Health and Wellbeing Partnership. They are the charity that are overseeing our warm hubs. They are starting three new events this week. The strictly FAB classes are starting in Shipston now as well as Standing Tai Chi and Zumba Gold.

Hope everyone is keeping safe and warm.

Cllr. Marianne Westwood  
My pronouns are she/her

**Mayor, Shipston Town Council**



## SHIPSTON ON STOUR



**YOUR TOWN  
COUNCIL NEEDS  
"YOU!"**

Shipston Town Council is now looking for local people to join us, as we work to help shape and develop the future of our town for the benefit of our thriving community.

- Are you passionate about our community?
- Would you like to contribute and make a difference in our town?
- Can you spare a few voluntary hours a month to participate in meetings?

If the answers to the above are yes, then please contact [clerk@shipstononline.org](mailto:clerk@shipstononline.org) for details on how to apply for one of our 3 current vacancies.

*"I have lived in Shipston for 17 years and our four children have all grown up here. We love the sense of community spirit and it's a privilege to be involved with the council and be able to contribute to the future needs of the town and our community"* - Tony Booth. Shipston Town Councillor.

## New Year, New You?

The start of a new year can be a time when many people are looking for change.

Whether that change is joining a new group, taking up a new hobby or committing to a daily walk – there are lots of ways to create new, healthy habits that support your health and wellbeing.

Being physically active is one of the five ways to wellbeing and is a great tool to help improve mental health and wellbeing, being active can make you feel good and can also help to reduce the risk of major illnesses.

There's strong scientific evidence that being physically active can help people of all ages to lead a healthier and happier life. People who exercise regularly have a lower risk of developing many long-term (chronic) conditions, such as heart disease, type two diabetes, stroke, and some cancers.

There are many ways to add more activity into daily routines and it can also be a useful way to connect with others – join a group or invite a friend along so you can connect with others while doing a positive health activity. For more information about local groups and ideas to increase activity, visit 5 ways to wellbeing – be more active at the website [www.warwickshire.gov.uk/5ways](http://www.warwickshire.gov.uk/5ways)

## News from Shipston Town Council's January meeting

### Micky and Linda's Plaque

The wording for Micky and Linda Cornock's plaque for a bench in the churchyard has been confirmed and the plaque itself will be ordered ASAP.

### Stratford CCTV

Councillor Cox recently revisited the CCTV centre where recent upgrades and digitisation have been completed. Operators demonstrated the cameras capabilities.

### Drugs and County Lines

Councillor Barker expressed concern in the rise of drug-related activity in Shipston and surrounding areas, and intends to contact the Deputy Police and Crime Commissioner and ask her to speak to Shipston's young people about the dangers of county lines.

### Shipston Community Christmas

Councillor John Dinnie reported that he has been approached by numerous people commenting on the success of the Shipston Community Christmas initiative.

### Stratford District Council Cost of Living Initiative

Councillor Harvey reported that £500,000 split evenly between 2023/2024 has been allocated to address the cost-of-living crisis.

### Warwickshire County Council (WCC)

Shipston's roads and pavements have now been dug up by over three organisations in attempts to resolve leaks that have occurred recently across the town. Councillor Barker reported that the leak in the grass area of Camden Road was fixed swiftly. County budgets are also being discussed at present.

### First Responders

First responders attended 360 calls in 2022, which amounts to almost a call per day. A new recruitment campaign has just begun, in addition to some spending on the maintenance of defibrillators.

### Ellen Badger

The integrated care board is meeting with members of the Town Council on the 16th January before touring the medical centre.

### Open Forum

A Speedwatch and SAFE representative brought attention to areas around the primary school are still not covered by 20mph speed restrictions. The representative stressed the issue of active travel zones.

Several New Street residents raised the issue of the poor road and pavement condition. The residents acknowledged that the road cannot be made bigger, but measures should be taken to reduce volume and speed nevertheless.

### Shipston Area Flood Action Group

The natural flood management programme started in 2016 and ran until 2021. SAFAG was awarded 1.3% of all nationwide funding across this period and was the only group in the funding pool to be led by community members. SAFAG will now concentrate on maintenance of existing projects rather than starting new schemes.

### Planning Committee

The planning committee is drafting a response to the South Warwickshire Local Plan Issues and Options consultation.

### Queen's Avenue Playground

Replacement perimeter fencing around the Queen's Avenue playground was discussed. Recommendation was put forward to approve a budget to fulfil this replacement, which was unanimously accepted.

### Teleconferencing Facilities

The working group is seeking to future proof the Town Council meeting room to support hybrid meetings if they are approved. Hybrid meetings can be conducted both in-person and online, however current rules prevent Councillors from voting/speaking unless present in-person.

### 2023 Budget and Precept

Recommendation put forward to match funding for active travel & speed limit implementation when appropriate, which was approved unanimously. Recommendation put forward to pay for VAT advice surrounding the sale of the Hub to Shipston Town Council, which was approved unanimously.



## Warwickshire Fire & Rescue Service

### Daniel joined Warwickshire Fire & Rescue Service (WFRS) as an on-call firefighter in June 2022 alongside his job in engineering.

He explained:

*"I decided to apply as I wanted to make a difference in my community and help those around me. Also, I wanted to explore an unfamiliar avenue and gain a new set of skills. Being on-call works well around my engineering role – I still get time to myself as well as attending work, call-outs and training courses. I get time to spend with family and go to the gym."*

When asked what an 'average' call-out is like, Daniel said:

*"Every call out is different and that's what I enjoy: every time my alerter goes off, I get a rush of adrenaline. I have attended a range of different incidents at all hours of the day and night. For example, it can be a fire alarm going off, it can be a house or field fire, or a car accident where we need to assist other agencies in getting the person in danger to safety and administering first aid. It's hard to describe an average call-out*

*as they are all so different!"*

We also heard from Daniel's girlfriend, Abbie, who shared her thoughts on his on-call career:

*"When he first told me about wanting to apply to being an on-call firefighter, I felt a mix of emotions. I was excited as it was the first time he was truly passionate about something, he was very excited and that was lovely to see. However, I was concerned about how it may affect us as a couple as well as him; physically and emotionally."*

*"I would like to say that I am so proud of him, he achieves so much more than I ever could and when I see 'thank you' posts on Facebook, knowing that he helped makes me so happy. With every call-out he comes back from, he grows and develops his skillset and his passion for firefighting gets bigger and bigger. So I say to him, "yeah, I'm proud of you and keep being you!"*

**We're always looking for on-call firefighters to join our service. Visit [www.warwickshire.gov.uk/oncallfirefighters](http://www.warwickshire.gov.uk/oncallfirefighters) to find out more.**



## Regular Events

### Monday

#### **Seated Exercise Class:**

10am Rainbow Fields and 11am Townsend Hall

#### **IT Help!:**

10am-12pm Shipston Library (appointment only)

#### **Shipston Duplicate Bridge Club:**

6:50pm for a 7pm start.

The Church Room, Darlingscote Road,  
Contact Matthew Hunter: 01608 684499

### Tuesday

#### **Rhyme Time:**

10.30am, Shipston Library

#### **Dementia Café:**

Shipston Lodge, 10.30am-12pm

#### **Lego Club:**

Shipston Library, 3.30pm

### Wednesday

#### **Dementia Friendly Café:**

10.30am-12.30pm, Shipston Lodge

#### **New Age Kurling:**

2pm, Townsend Hall

#### **Seated Tai Chi:**

9.30am-10.30am, Townsend Hall. Free Admission

### Thursday

#### **Shipston Winter Warm Hub:**

9am-1pm, The Scout Hut, New Street.  
Every Thurs till end of March (except 29 Dec)

#### **Story stomp:**

10am, Shipston Library

#### **Scrabble Club:**

2pm-4pm, Shipston Library

#### **Stour Singers:**

Rehearsals, 7.30pm at Shipston Primary School.  
Sept 2022 through May 2023.  
Contact Gayle Burch, 01926 642204

### Friday

#### **Pilates for Complete Beginners:**

9.30am Townsend Hall

#### **Walks with a friendly group:**

10am Mill car park. Call Marleen 01608 663616

#### **Shipston Stitchers:**

Every fortnight at The Church Room, Darlingscote Road.  
Contact Anita Spencer on 01993 832665

#### **Board Games Social Afternoon:**

Fortnightly 2pm Rainbow Fields

### Saturday

#### **Lego Club:**

Shipston Library. From 10am.

## What's On Calendar

### February 2023

- 1 **Shipston Widows:** Local lunch. 12pm. Contact: Barbara Bean 663230
- 4 **Shipston Town Council Monthly Litter Pick:** All welcome. Meet at New Clarke House, West Street at 10am. Equipment and refreshments provided.
- 6-8 **Shipston Home Nursing:** Pop Up Shop - see ad on page x
- 7 **Shipston Library Reading Group:** 2pm-3pm first Tuesday of each month.
- 8 **Shipston and District Gardening Club -** The Secret Wildlife of my Garden by Nick Martin. 7.30pm, Catholic Church Hall, Darlingscote Road. Contact Tony Mitchell 01608 666933
- 13 **Holiday at Home:** See ad on page 11
- 13 **Shipston Town Council Meeting**
- 15 **Shipston Widows:** Join us for a friendly and informal get-together. 10.30am - 12pm, The White Bear. For further information, contact Barbara Bean on 663230  
**Singing Down Memory Lane:** 2pm-3.30pm, Rainbow Fields, The Driftway, Shipston. Refreshments provided. We may be able to help with transport. Contact Fay Ivens on 01608 662133
- 17 **Royal British Legion Social Evening - Shipston Branch:** Third Friday of each month We meet in the White Bear Inn from 7.30 pm onwards. Come and join us and share your stories with like-minded people. Contact Alex Black 07789 968733 or alblack32@hotmail.com  
**Shipston Music Society:** Blockley Blokes Choir - see ad on page 7
- 22 **Shipston and District Literary Society:** Remembering Frank Muir & Dennis Norden – two writers of comedy, by David Howe. Meetings are held at the White Hart Inn, Newbold on Stour at 7.30pm. Visitors welcome £5. Contact Helen Marshall 07582 903212
- 23 **Local Quaker Meeting for Worship:** St Edmund's Church, last Thursday in the month at 2.30pm, followed by tea/coffee, biscuits & chat
- 24 **Townsend Hall:** Tenement Jazz Band - see ad on page 7
- 28 **Shipston U3A:** see ad on page 7



## Back in the Swing



After a busy run up to Christmas, with some great events, including our own Carl Sinclair Quartet booking that was a lot of fun, we took a breather from our Traditional Jazz events in January, but we're now back in the swing of things. Get your tickets sorted for the Tenement Jazz Band on Friday February 24th. This promises to be another good one – they won the Best Band, Scottish Jazz Awards, 2022 and quote: “The passion with which these young musicians approach the music is unmistakable...a most welcome addition to the ranks of young traditional jazz bands... the future of traditional jazz is in good hands” – Bert Thompson, Just Jazz Magazine, April 2019 (Review of New Orleans Wiggle EP). Tickets are £10, available from [www.ticketsource.co.uk/townsend-hall](http://www.ticketsource.co.uk/townsend-hall), where you can bag your own table and seating, or from Clarke Electrical Services in town.

In other news, maintenance of the hall, totally managed by volunteer trustees, never stops and we've now fitted new doors to the ramp area and progressed, successfully, our vacancies for a cleaner and hall bookings administrator – thank you to all the candidates that put themselves forward. Don't forget that we're a charity, we receive no direct grants from any source and maintenance is totally funded through hall booking fees, kind donations, and the proceeds from events we put on in our Traditional Jazz programme – if you think traditional jazz isn't your thing, you might be surprised - give it a go, we're confident you'll enjoy the evening and the high level of musicianship.

There's plenty of other great things going on – this may not hit the presses before the Treasure Island pantomime staged by the Shipston Amateur Dramatic Society, but we're sure you'll have had a lot of fun. You may also still be in time to attend another one of the great events that Cotswold Events book into the hall – this time Abbaholics on Saturday 11th February.

Take a look at [www.townsendhall.co.uk](http://www.townsendhall.co.uk) for more. From here you can see everything else going on at the hall including clubs and sports.

## Shipston Proms



We didn't have a meeting over Christmas so any Forum updates will have to wait until next month. For current information please go to our website [www.shipstonproms.org](http://www.shipstonproms.org) or Facebook page. We hope also to have a slot in the 2023 What's on Diary of Cotswold Life.

We would just like to say many thanks to Dave at First Edition who has raised money for the Shipston Proms. He has a great knack of bringing people together at his Thursday Quiz Nights and the tables are packed with regulars and visitors alike. All donations from entering the quiz competition goes to his charity of choice and Shipston Proms is one of the recipients. We still have some black T shirts for those who would like to buy some in advance. Please get in touch if you would like some and we will get them to you. We are holding them at 2022 prices at £10 each. With many thanks.

Don't forget, the dates of the 2023 Proms are 17th June to 1st July!

## Shipston Town Band



On Thursday 15th of September Shipston Town Band supported the Shipston Branch of the Childrens Society in a major fundraising event at the local stately home of Alscot Park. High profile guests included the Bishop of Coventry and we were told that the event had been a huge success. Initially the band played a selection of Christmas Music outside to welcome the guests and coped well with the temperature of minus 8. Fortunately, the valves and slides did not freeze. 8 of the band then retired to a rest room to appear at the end of the evening to accompany the guests for carol singing.



## Shipston Home Nursing

We're also delighted to announce the return of our pop-up shop at The White Bear in Shipston. We'll be selling new and pre-loved designer clothes, homewares, accessories, jewellery and books to raise funds for Shipston Home Nursing.

**Monday 6th February to Wednesday 8th February 10am-3pm.**

<https://www.shipstonhomenursing.co.uk/event/pop-up-shop-2/>



## Beauchamp Sinfonietta 50th Anniversary Season

**Saturday 28 January 2023**

The Grange Hall, Southam, **Afternoon Tea Concert at 3:00pm**

**Sunday 29 January 2023**

Holy Trinity Church, Beauchamp Avenue, Leamington Spa, **Afternoon Tea Concert at 3:00pm**

**Conductor:** Roger Coull

**Leader:** Susan Meteyard

### Programme:

Mozart	Overture Idomeneo
Bartok	Romanian Dances
Britten	Simple Symphony
Beethoven	Symphony No.6 Pastoral

Tickets available on the door - £14, £12 (concessions), £2 (students and children)

[www.beauchampsinfonietta.org.uk](http://www.beauchampsinfonietta.org.uk)

For further information please contact: **Claire Johnson, Publicity Officer, Beauchamp Sinfonietta - 07768 477544**

## Supporting Women and Girls in Ethiopia with Knitting

Patients at the Fistula Hospital in Ethiopia often experience extreme weather conditions from daytime heat to freezing nights. For several years, volunteers have helped supply knitted shawls to protect patients from these rapid temperature changes.

The shawls are a treasured possession for patients and they each take one home when discharged. With these living conditions in mind, we ask that you knit with quality over quantity in mind.

Ronnie Murphy is once again collecting knitted squares to send to Hamlin Fistula UK where they will be stitched into finished shawls. For further information about how you can contribute please contact her on 01608 664518.

**Please submit your knitted squares to these exact specifications:**

6in x 6in (15cm x 15cm) squares

Garage stitch with UK No.8 needle (4mm) using doubled knitted coloured acrylic yarn (no white thread).

## Shipston Stitchers

We are a small group of friendly embroiderers who meet fortnightly on a Friday at the Catholic Church Rooms in Darlingscote Road from 10am – 3pm. We are of mixed ability and we cover cross stitch to gold work.

Our upcoming dates are as follows:

**February:** Friday 3 and 17

**March:** Friday 3, 17 and 31

**April:** Friday 14 and 28

**May:** Friday 12 and 26

**June:** Friday 9 and 23

Why not come and meet us one Friday?  
Tel Anita on 01993 832665 for further info.

## Holiday at Home

In early summer 2012, a group of people from Christians Together in Shipston decided to run a Holiday at Home for people over 65, in August of that year, initially funded by the churches. The thinking behind it was many of the clubs and activities close down in August and not everyone has the opportunity or ability to go away. So we booked the Townsend hall for 5 days, spent the first day setting up, then invited guests to come for the next 4 days. They were greeted at the door, had coffee or tea and biscuits, a quiz or just chat, then various activities were offered; crafts, puzzles, games, Wii, and a host of other things to do. A home-made 2 course lunch followed a Thought for the Day by one of the local clergy, then the afternoon was taken up with some entertainment. The day ended with tea and cake.

More than 10 years later, the format is very similar, although the 4 days are spread out during the year – the volunteers were exhausted after 5 days! We are very grateful to the Lions club for their very generous financial support enabling us to keep going because of increased costs. We now have professional caterers providing lunch and frequently professional entertainers too.

Our next event is on February 13th, with the theme of Love. To book a place please see our advert on p11.



## SHIPSTON ON STOUR AREA

u3a

Registered Charity No 1170969

**TUESDAY 28 FEBRUARY, 2023**  
**2 pm TOWNSEND HALL**

**'Unlocking Your Local Church....'**  
**A talk by Andrew Parsons**



... in order to recognise what you can deduce about a church's history, and what it is based upon, using a variety of ideas from prehistory onwards as well as images from local churches and much further afield.

**Visitors are welcome**  
**Entry including refreshments £2**



52 Sheep Street, Shipston-on-Stour, Warwickshire. CV36 4AE

# Tenement Jazz Band

Best Band,  
 Scottish Jazz  
 Awards, 2022



Charles Dearnness - Trumpet  
 Stephen Feast - Tenor Sax / Clarinet  
 Paddy Darley - Trombone  
 John Youngs - Guitar / Banjo  
 Doug Kemp - Double Bass  
 Rory Clarke - Sousaphone

**Friday 24<sup>th</sup> February 2023**  
**Doors Open 19:00 for 20:00**  
**Fully Licensed Bar**

## Tickets £10 from:

- o Clarke Electrical Services, 01608-661394, or
- o For online booking, visit [ticketsource.co.uk](https://ticketsource.co.uk) or [townsendhall.co.uk](https://townsendhall.co.uk), or
- o Email / Phone David: [ds@pinnegards.com](mailto:ds@pinnegards.com); 07511-694733

## REUSE - REWEAR - RELOVE



## POP UP SHOP

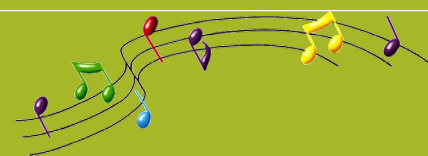
**Pre-loved and new designer clothes,  
 accessories, jewellery, homeware and books**

at: The White Bear Inn, 4 High Street, Shipston on Stour  
 from: Monday 6<sup>th</sup> - Wednesday 8<sup>th</sup> February  
 time: 10am - 3pm

Raising funds for Shipston Home Nursing hospice care at home, supporting people in Shipston, Wellesbourne, Kineton and surrounding villages.

For more information, visit [www.shipstonhomenursing.co.uk](https://www.shipstonhomenursing.co.uk) or email [fundraising@shipstonhomenursing.co.uk](mailto:fundraising@shipstonhomenursing.co.uk)

Registered Charity Number 1162586



## BLOCKLEY BLOKES CHOIR

## "SONGS MEN SING"

**SHIPSTON MUSIC SOCIETY**  
**Friday 17<sup>th</sup> February, 7.30pm**  
**Methodist Church**

**New Street**  
**Shipston on Stour**

**Tickets £8 available from**  
**Clarke's in Shipston, or pay on the door**  
**Free entry to members**



For more information  
 01608 662514

Registered Charity No: 1146459 (England)



## Shipston Rotary 2 Minute Trolley Dash

Congratulations to the winner of the 2 minute Trolley Dash - Oliver Bolderston - who filled his trolley with £163 of goodies in the Shipston Co op last Sunday.

Thank you to everyone who bought tickets either in Shipston Co op or at the Rotary Victorian Evening.

An amazing £600 was raised for Local Rotary Charities and Good Causes.

With very many thanks to Shipston Co op for Sponsoring the Trolley dash again this year.



## Shipston Rotary Draw

First Prize £ 57.50 winner No.58

Second Prize £ 34.50 winner No.52

Third Prize £ 23.00 winner No.29

There are 54 numbers available. If you would like to sign up at £5.00 per month, please contact Anthony Joint [tonyjoint73@hotmail.com](mailto:tonyjoint73@hotmail.com).

Congratulations to the winners.



## Shipston Widows

Shipston Widows' Club was formed in 1994. We may not be the "Merry Widows" of Franz Lehar fame but we DO like to get together several times a month to meet our friends in Shipston Widows' Club for a chat, a coffee and a meal. Often we have very interesting speakers come to entertain us.

We meet at The White Bear on the FIRST Wednesday of each month at mid-day for a meal. This is a very sociable occasion. Giving us all the opportunity to catch up with friends' news etc.

On the THIRD Wednesday of each month we meet again, at 10 30 AM for coffee in The White Bear, where we often have a speaker on all kinds of interesting topics. Afterwards those who wish to can stay for lunch.

Our club is open to ALL widows of whatever age, not just those who live in Shipston but in any of the surrounding areas and villages. We are looking forward to meeting new friends in this coming year, especially after the recent quiet time during the Pandemic, where we were unable to socialise and meet those friends dear to us.

We aim to put this right in 2023. We are a very easy-going bunch, offering friendship, understanding and empathy. We look forward to meeting you all soon. For more details, please ring Barbara Bean on 01608 663230.

## Shipston Flower Club

14th February: Shipston Flower Club presents Bee Kind To The Planet – a demonstration by Elaine Millward. Doors open at 7.00 pm for a 7.30 start at Shipston Primary School, Station Road, CV36 4BT.

Visitor entry £5.00. There will also be a raffle of demonstrated arrangements.

Meetings take place on the second Tuesday of every month.

## Cornmill Meadows

A day of planting whips (small, unbranched tree stems) at Shipston's newest wild-life area will be held on February 18th, 10am-3pm. Please bring drinks and packed lunch; wear old clothes!

For more information, please email: [hilary.kelly@shipstontowncouncil.org](mailto:hilary.kelly@shipstontowncouncil.org)



*Small White Butterfly (credit: Ian Bailey)*

## Down Memory Lane (for people with memory loss and their carers)

A lovely time was had by all at the December meeting of Down Memory Lane at Rainbow Fields. Everyone enjoyed singing Christmas songs accompanied by the wonderful Nick Nickerson on guitar, whilst enjoying yummy refreshments and there was even some dancing!

The next meeting is on Wednesday February 15th at 2pm at Rainbow Fields.

For further information please contact Fay Ivens on 01608 662133



## Calling all allotment holders

The annual meeting of Shipston-on-Stour  
Allotment Holders will be held at 7.00pm  
on Tuesday 28th March 2023  
in the Council Chambers at New Clark House

*All allotment holders welcome.*



Any queries, please contact  
Diane Neath, Administrative Officer  
on 01608 662180 or  
email: [admin@shipstononline.org](mailto:admin@shipstononline.org)

## SHIPSTON'S GOT TALENT 2023

9th - 11th March 2023  
St Edmund's Church, Shipston on Stour

In aid of the Mayor's nominated charity  
Stour Health & Wellbeing Partnership

FULL DETAILS ON THE  
TOWN COUNCIL WEBSITE  
[WWW.SHIPSTONTOWNCOUNCIL.ORG](http://WWW.SHIPSTONTOWNCOUNCIL.ORG)

## SHIPSTON WINTER WARM HUB

Every Thursday, 9am-1pm, starting 20th Oct  
The Scout Hut, New Street, Shipston CV36 4EW



- Come along, keep warm & cosy & have a good chat
- Relax with free refreshments, board games, books & wifi
- Plus energy saving tips & advice

**Everyone's welcome!**

This event is jointly run in partnership by



Community project  
supported by



## SHIPSTON ON STOUR Warm Hubs



M Tu W Th F Sa Su

**Mondays**  
10am - 12pm  
Shipston Library



M Tu W Th F Sa Su

**Tuesdays**  
2-4pm  
Methodist Church, New Street

**The Methodist Church**  
New Street, Shipston on Stour CV36 4EN  
Along with free tea, coffee and biscuits, there will be games, jigsaws and toys available to share on site. Or meet friends for a chat in the warmth of our meeting room. Open 2-4pm Tuesdays starting 3rd January 2023.

M Tu W Th F Sa Su

**Wednesdays and Sundays**  
11am - 4pm  
St Edmunds Church, Shipston



M Tu W Th F Sa Su

**Thursdays**  
9am - 1pm  
Shipston Scout Hut



**SHIPSTON WINTER  
WARM HUB**  
Every Thursday, 9am-1pm,  
from 5th January until 30th March  
The Scout Hut, New Street, Shipston CV36 4EW

M Tu W Th F Sa Su

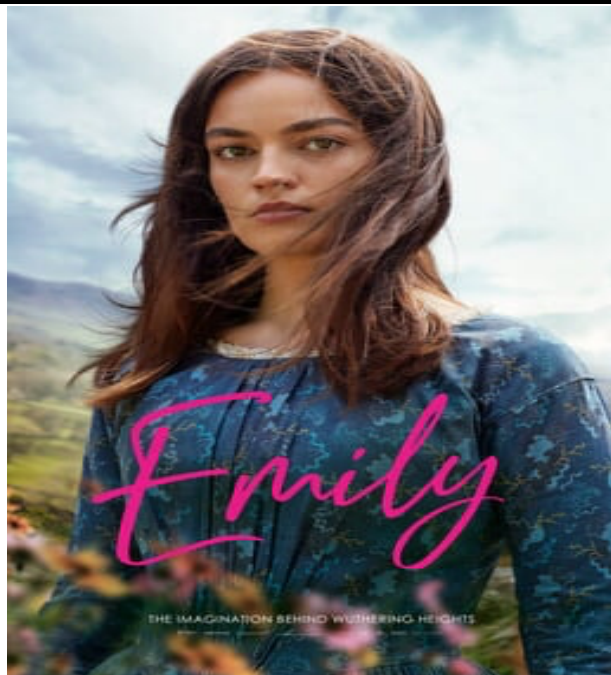
**Fridays**  
1.30pm - 4pm  
Rainbow Fields, The Driftway



Come along, keep warm and cosy,  
relax with free refreshments and board  
games, or meet friends for a chat.  
On the following Fridays:  
13 January, 27 January,  
10 February, 24 February,  
10 March, 24 March



## STOUR VALLEY LIONS CINEMA



Fictional portrait of English writer Emily Brontë (played by Emma Mackey), concentrating on a romantic relationship with the young curate William Weightman. Certificate 15.

## TOWNSEND HALL

**FRIDAY 10th FEBRUARY, 2023 at 7.30pm**

Advance Tickets £5.00 or pay on the door.

From: A. Clarke Electrical, 27 High Street, Shipston On Stour.

**Covid restrictions – please hand sanitise on arrival.**

Any enquiries please email: [stourvalleylions@gmail.com](mailto:stourvalleylions@gmail.com)  
Drinks and raffle.

Love is in the air .....

so come and join friends at

Holiday at Home

on

February 13th

10am—3pm  
in the

Townsend Hall

£10 to include 2 course meal,  
crafts, refreshments and  
entertainment

Booking essential

To reserve your place please  
phone Rosemary on  
01608 662584

An activity organised by Christians Together in Shipston

## STANDING TAI CHI

**FREE ADMISSION**

**Wednesday 10:30am - 11:30am**

TOWNSEND HALL, SHIPSTON ON STOUR



Tai Chi – Qigong Shibashi is for any age and ability.  
A gentle movement class aimed to help strengthen the physical body and  
its immune system whilst improving mental wellbeing.

For more information or to book a place please contact Julia Reeves on  
07808 921899 or e-mail [juliareeves211@gmail.com](mailto:juliareeves211@gmail.com)

This is one of the range of FREE activities in the Dr Sue Pritchard Memorial Challenge delivered by the Stour Health and Wellbeing  
Partnership in conjunction with Sport England and L&Q. For more information on other activities please visit: [www.shwp.org.uk](http://www.shwp.org.uk)



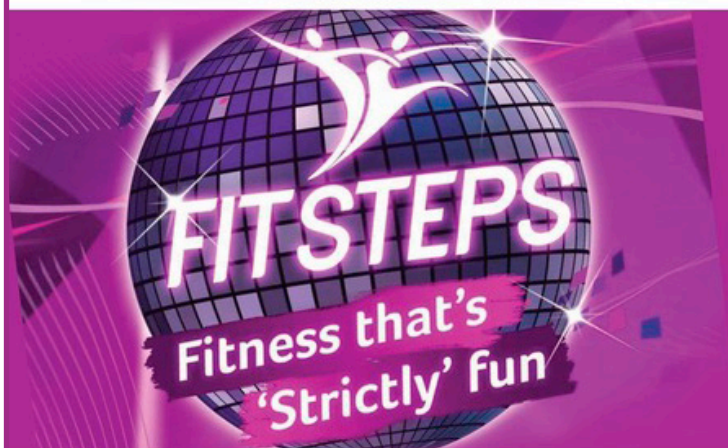
## STRICTLY FITSTEPS FAB

(For all bodies!)

**FREE ADMISSION**

**Tuesdays 10:00am - 11:00am**

TOWNSEND HALL, SHIPSTON ON STOUR



FitSteps FAB is a low impact, low intensity dance fitness workout suitable  
for EVERYONE! You don't need a partner or any dance experience.  
And you don't need to be fit to enjoy FitSteps FAB - It's For all Bodies!

For more information or to book a place please contact Vanessa Compton on  
01608 663320 or e-mail [admin@shwp.org.uk](mailto:admin@shwp.org.uk)

This is one of the range of FREE activities in the Dr Sue Pritchard Memorial Challenge delivered by the Stour Health and Wellbeing  
Partnership in conjunction with Sport England and L&Q. For more information on other activities please visit: [www.shwp.org.uk](http://www.shwp.org.uk)





## All Political Careers End in Failure! A Probus Talk by Philip Bowen

We have just experienced one of the most politically turbulent years in our history – 2022 saw the passing of three Prime Ministers, four Chancellors and umpteen government ministers. Philip Bowen's illustrated talk to Probus members, a challenging thesis, amply demonstrated political turbulence is not new! Since the days of Neville Chamberlain (1937-1940) we have had nineteen Prime Ministers and, apart from Harold Wilson, everyone was either forced to resign or was defeated.

Philip gave members a thought-provoking and entertaining account of the dramatic rise and fall of a selection of our more recent politicians, liberally illustrated with some of the best contemporary newspaper cartoons.

Theresa May, labelled by some "Submarine Theresa" was very private: "It is not my job to fill column inches with daily updates!" She had a vision for Brexit, and was the first to meet, somewhat uncomfortably, with President Trump. May lost her majority in the general election and was forced into doing a deal with the DUP. She ended her career politically friendless, and despite her clear sense of duty was even accused of being "guilty of treason" by certain press members.

Tony Blair - one of the most forceful and controversial post war PMs was the youngest PM at 43 and the first to father a child while in office for 150 years. Reviled by some of his own party, Blair was labelled 'Thatcher's heir'. Famously, despite his innovative ideas for the reform of public services, Blair foundered on the Iraq war. When questioned as to how the slaughter of war sat with his Catholic faith he is reported as saying "I am ready to pay a blood price and meet my maker."

Gordon Brown met with Blair in a restaurant and agreed a 'Granita Pact' to divi up the party leadership. Eventually handed

the Premiership, Brown was faced with a financial crisis. Uncomfortable in public, Brown suffered an excoriating confrontation with a member of the public, Gillian Duffy, who challenged him on migration; Brown retreated to his car and with his microphone still on referred to her as "a bigoted woman".

The feelings expressed by Duffy was to figure strongly in the Brexit vote to come, but was not picked up by the government at the time and Brown lost the election.

Two politicians who had a significant influence on subsequent political life but failed in their ultimate careers were Tony Benn and Enoch Powell. Benn was the main author of Labour's 1983 manifesto, aptly described as "the longest suicide note in history". Benn failed to gain leadership of his party but continued to influence Labour thinking in subsequent years.

As Minister of Health, Enoch Powell introduced prescription of the contraceptive pill by the NHS. He was anti Common Market, but his 'rivers of blood' speech whipped up serious anti-migrant sentiment and remains a significant feature of present day politics.

Philip concluded with the observation that British Prime Ministers have enormous power but, "power tends to corrupt and absolute power corrupts absolutely". Perhaps the true skill is to know when to go gracefully. Margaret Thatcher is reputed to have said after retirement that she "never had a happy day after leaving Downing Street". In the words of Shakespeare, "I do feel it gone, but know not how it went". (Winter's Tale)

Probus meets fortnightly at Shipston Sport's and Social Club. Guests and new members are most welcome. Please contact Tony Joint on 01608 or email [tonyjoint73@hotmail.com](mailto:tonyjoint73@hotmail.com) for further details.



## An Open Letter

Dear all,

The image shows a litter pick bag we filled on our regular walk around the Fell Mill, Willington, Barcheston loop on Christmas Eve.

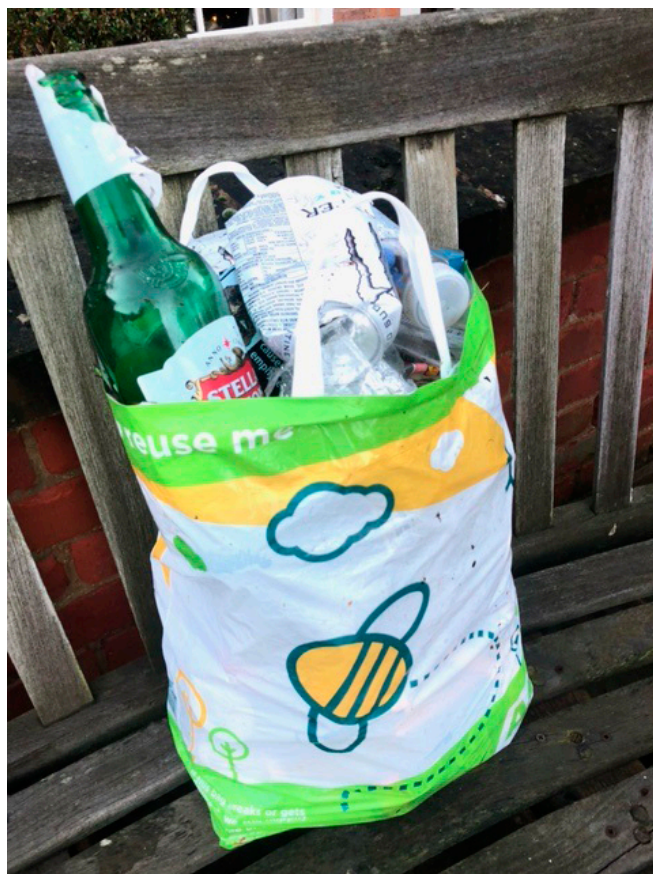
It's just 2 days since we last did it and it is mostly empty booze bottles and cans left by the 'regulars' on their nightly travels. The folk who leave this rubbish behind aren't going to change, although it would be helpful if they left it by the roadside to be easily collected, rather than throw it into the bushes!

We don't mind doing this and there are lots of walkers from Shipston who do the same circuit, some of whom also pick stuff up - but it would be great if everyone did the same.

Please help, thank you.

Phil and Liz Wragg

Church St.



## Shipston Primary School

### GYMNASTICS LESSONS

The coaches from Peacock Gymnastics visit Shipston Primary School every Friday afternoon to teach lessons to each year group over the course of the year. Children in Year 6 classes were fortunate to have their lessons at Peacock Gymnastics Academy on Tilemans Lane. Below are reports from Flamingos and Pelicans classes.

On Friday afternoons, we walk up the hill to Peacock Gymnastics where we take part in an exciting range of gym lessons.



The coaches are Bejou, Annabelle and Alicia, and they teach us a range of skills using incredible equipment, such as bars, vaults and beams. Every week, they teach us how to stretch so we are ready to start gymnastics. We will be taken to either the bars, beam, floor, air track or vault, where we are taught to balance, somersault, handstand, bridge and roll. At the end of our lesson, we usually go into groups such as the tumbling group, the back walkover group and floor group and perform our skills for the class.

We have loved our sessions and have really enjoyed being able to use the gymnasium and equipment. We have all really improved our skills and the coaches can't believe how good we have got in such a short space of time. We are sad that our time at Peacock Gymnastics is coming to an end, but have loved every minute.

*by Amelia, Meg and Oliver (Pelicans)*

Last term, Year 6 attended Peacock Gymnastics Academy on Friday afternoons to participate in gymnastics. We learnt many new skills: beam, bars, vault, floor and pommel horse.

Whilst there, boys performed on the pommel horse whilst the girls were tumbling and learning how to do back handspring, backbends and front tucks. On beam we learnt: kicks, cartwheels, backwalkers and jumps. On bars we performed walking, leg lifts; and many other conditioning exercises.

Our favourite was the tumbling as some of us learnt how to backhandspring, front tuck and backbend. It has been great fun and we all enjoyed it as well as learning many new skills.

*by Emily and Natalie (Flamingos)*

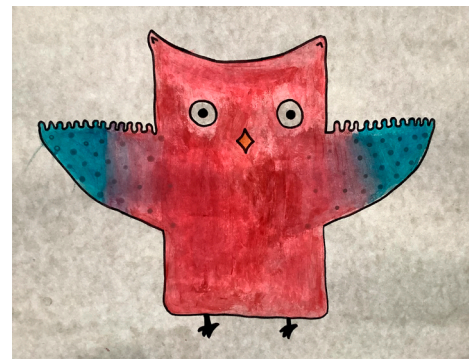
### FROZEN KINGDOMS

Children in Year 6 have begun their Frozen Kingdoms geography topic this term. This project teaches children about the characteristics and features of polar regions, including the North and South Poles, and includes a detailed exploration of the environmental factors that shape and influence them. As part of the Engage stage of our curriculum design, Flamingos and Pelicans classes were fortunate to be able to welcome polar explorer

Simon Harris-Ward. He talked to the children about his experiences in the Arctic and Antarctica, shared his knowledge of polar animals and the hazards on expeditions such as frostbite, snow blindness and falling down a crevasse. Simon brought some expedition clothing with him so the children were able to dress up as a polar explorer.

The art companion project to Frozen Kingdoms is called Inuit. This project teaches children about the Inuit way of life, including some of their cultural and artistic traditions. They have learnt about the importance of animals as a powerful and important subject matter for the Inuit and the three main types of associated art skills: printing, carving and stencilling. They have studied Kenojuak Ashevak's drawings, prints and sculpture and how they express her understanding of the world through unique imagery. Her early work is filled with images of camp life, people, animals, and for what Kenojuak is renowned: fantastical birds that reveal her ability to capture the essence of her subjects in simple forms. Reproduced on a postage stamp in 1970 to commemorate the centennial of the Northwest Territories, Kenojuak's "The Enchanted Owl" has become an icon of Canadian art.

The images show a wonderful variety of fantastic art work from Year 6. They've also been taught how to carve using soap.



### THE STOUR FEDERATION MULTI ACADEMY TRUST

Shipston Primary School is part of The Stour Federation Multi Academy Trust, with Acorns Primary School, Brailes C of E Primary School and Kineton C of E Primary School. Our Trust website is [www.thestourfederation.com](http://www.thestourfederation.com)



**Christian Hilton, Executive Headteacher**



## Shipston High School

2023 has started for positively for Shipston High School. Students are busy in all year groups, and we are already looking ahead to Spring and Summer activities.

To help exam candidates know what lies ahead, we run mock examinations in December. In recent years we have established a mock exam results day in January, reflecting the real results day which occurs in August. Just as Students will experience in the summer, results were published and collected by students from the school hall at an appointed time. This created a real sense of occasion, and enabled students to feel the same anticipation that accompanies the final results.

This was a really positive event, allowing students to celebrate their successes and plan for any areas of improvement. There was much to celebrate with many securing grades that are very encouraging for the final results. All agreed that the process provided the right focus and sense of purpose for the final weeks of preparation. GCSEs begin in May, and I know all of Year 11 will be pushing themselves to exceed their mock results.

An important foundation for success at school is regular attendance, and Shipston High School students are impressively committed to being in school and ready to learn every day. To reward students for their good attendance, we were delighted to welcome singer and musician Luke McQuillan to perform a concert in the school. Everyone had a great time dancing and singing along, and we are keen to plan further attendance reward events in the future.

Next month, many families will be find out which secondary

school their children will attend in the Autumn. Once again, Shipston High School will see its largest year group to date join the school next year. The school's popularity and reputation continues to attract more applications than available places, and this demand for good school places drives our desire to increase our intake. Plans for building new facilities at the school are progressing quickly, and I hope to be able to share more details soon. For now, I am sure that children coming to Shipston High School in September 2023 will be eager to make their own contribution to our growing community and we look forward to meeting you in person.

Finally, a message on behalf of Warwickshire County Council, who are seeking panel members to hear school admission appeals. Independent Appeal Panels consider appeals by parents against school admission decisions for schools within Warwickshire.

The busiest time for appeal hearings is from April to July each year. Hearings are held during the day, in term time. Panel Members must exercise good judgement and need to be interested in schools and education and prepared to undertake training for the role - which will be provided by Warwickshire County Council. WCC are inviting expressions of interest via e-mail to

[schoolappeals@warwickshire.gov.uk](mailto:schoolappeals@warwickshire.gov.uk)

Telephone enquiries can be made to either Tania Martin or Jayne Comerford on 01926 736381 or 01926 412082

**Gavin Saunders, Headteacher**



## Shipston Medical Centre

**Medical Centre t: 01608 661845**

In recent months we have noticed an increase in the number of patients that are either not attending or not booking in for screening appointments when invited. We strongly encourage you to take advantage of the screening programmes that are available as these are evidence based and proven to pick up concerns early. They can save your life!

### Cervical screening (smear test)

Cervical screening helps to save 5000 lives each year. Women are invited for cervical screening between the ages of 25 and 64. Women aged 25–49 are invited every three years and women aged 50–64 are invited every five years. Women may be invited for screening up to 6 months before the age of eligibility (ie. at 24 years and 6 months old).

Patients eligible for screening are often anxious about the procedure. Our nurses have a lot of experience in administering the test, and will be happy to talk about it and will help make the experience as easy as possible.

### Bowel Cancer Screening

This is aimed at people aged 60-69 who will be sent a letter and then a week later a screening kit through the post every two years. Those over the age of 70 can request kits by calling 0800

707 6060. Sadly bowel cancer affects one in 20 people and is the third most common cancer. Whilst taking a stool sample and sending it back may not be a very pleasant thing to do, it really can make a difference – screening reduces the risk of dying from bowel cancer by 16%.

### Aortic Aneurysm Screening

This is offered to gentlemen in their 65th year, although older gentlemen can refer themselves for screening by calling 01788 663428. There are around 6,000 deaths each year in England and Wales from ruptured abdominal aortic aneurysm, with about 4% of the male population aged 65-74 having an aneurysm.

### Breast Screening

About 1 in 8 women in the UK are diagnosed with breast cancer during their lifetime. If it's detected early, treatment is more successful and there's a good chance of recovery. Breast screening is offered to women aged 50 to their 71st birthday. Whilst currently screening is not available in Shipston eligible women will be offered appointments in Stratford or elsewhere. Please attend or rearrange to a different location or venue for a date that is more convenient.



Shipston Medical Centre



## District Council update



One of the major areas of responsibility SDC has is its role as the local planning authority. Residents and other developers will know that if they want to build, extend or otherwise alter properties, they must consider whether planning permission from their local authority is needed.

One of the consequences of development can be an obligation to pay the Community Improvement Levy (CIL). This is a payment by the developer towards the provision of community amenities. SDC has a process of annually allocating available funds to competing bids that qualify for support. This year SDC has CIL funds of £2.6m available for allocation and has received 35 qualifying bids totalling £45m. SDC has a process for determining how the funds available can be allocated fairly and to best effect. SDC's Cabinet is due to consider proposals in February that could include a bid by SWFT for £1.4m towards financing of the redevelopment of the Ellen Badger Hospital. I am hopeful that, if approved, financially at least, this will see this project 'over the line'.

SDC also has an important role to play in contributing to the future economic success of the District and its residents. One way it can do this is by developing planning policies that encourage and facilitate businesses to establish themselves or to relocate to the District. For a number of years, for example, SDC has been discussing with the University of Warwick and local businesses how the University's Wellesbourne Campus can become a hub for local economic development. Public consultation will shortly take place over proposals for a Framework Masterplan for the Campus, a set of high-level design principles that SDC will use to guide development proposals and planning applications. The Framework Masterplan envisages the creation of a series of innovation hubs within the Campus supporting new businesses and, by drawing on the resources of the University, the creation of new avenues of employment for the District.

SDC has a wider responsibility to ensure there is in place a Local Plan that sets out principles and policies to guide the development of the District. The current Core Strategy was adopted in 2016 and runs to 2031. SDC together with Warwick DC is in the process of creating a successor plan for South Warwickshire that will run to 2050. The South Warwickshire Local Plan will set out a long-term spatial strategy for jobs, infrastructure, housing and climate change for both Districts. Residents are able to comment on the issues and options that have been identified through a consultation period of six weeks that started on 9 January and runs until 6 March 2023.

My point is that many residents, quite understandably, see their Council primarily as the organization that collects their refuse every week. Their Council Tax, however, also goes to paying for, amongst other things, a lot of planning related work that is undertaken largely out of sight, requires knowledge, skills and abilities that take a long time to develop, and work that sometimes takes years to come to fruition. Whether it is through the allocation of CIL funds, the development of specific planning frameworks or the development of a plan for the future of the District as a whole, SDC is a team effort aimed at delivering results for the benefit of its residents.

As ever, if you have any issues with which you think I might be able to help, please contact me. I am always keen to hear from the people I represent.

**Trevor Harvey, District Councillor, Shipston North**  
01608 682415 | [trevor.harvey@stratford-dc.gov.uk](mailto:trevor.harvey@stratford-dc.gov.uk)

*Jo Barker and Trevor Harvey take it in turns to write this column*

## County Council update



I thought I would just have a quick review of last year as your County Councillor! Mostly my time is taken up with highways issues – from potholes to traffic lights and damage to pavements to culverts. Please do use the reporting page on WCC website "Customer report a Fault live" where you can put it on the map and even attach a photo! This can be for any of the issues above. If you copy me in at [jo.barker@warwickshire.gov.uk](mailto:jo.barker@warwickshire.gov.uk), I can then give our officers a little nudge!

Shipston sprang a lot of leaks last year – and I know some are continuing. I was lucky to attend an event with the CEO of Severn Trent and as a result I have a shortcut to getting leaks on the job sheet! This is one part of our infrastructure which is being worked on this year – to improve drainage and flow, particularly from the newer developments round the town. I am seriously hoping that within 12 months I will no longer be invited to look at pooh tidemarks in certain bits of Shipston.

The Ellen Badger project is making progress – this note from SWFT popped into my emails as I was writing – "The demolition work has taken place and the Trust are currently liaising with contractors to agree a plan for the main construction work. Alongside this, the Trust's operational team are scoping which services and specialties will run from the hospital site. This piece of work involves our clinical teams and will be shared with the wider community as soon as possible." I am now on the project board and can tell you that I was actually, much to my surprise, really encouraged about progress at yesterday's meeting!

But, the favourite bits of what I do, are helping make a real difference in people's lives. I am privileged to be a trustee of the Youth Club for which we have fought tenaciously – and at a meeting last week we were all really excited that we are truly up and running again. I also help out at Foodbank. Shipston people are so generous to those who need help (tearing up as I write) – this absolutely embodies the independent spirit of our town! I'm putting this shout out here – because I know there will be people reading this who think they can manage – my plea is that if you are struggling, Foodbank is there and we know that there are people who need us!

If you have a question, issue, gripe, rant or just fancy a cuppa – then I am at the George on Thursday mornings again – sometimes my other local colleagues will join (and my Boston terrier). Even if we, the former, don't help your wellbeing much, she will!

It's school admission time again – if you have any problems and need my help – please get in touch.

**Jo Barker, she/her**  
**County Councillor, Shipston**  
07748 968712 | [jobarker@warwickshire.gov.uk](mailto:jobarker@warwickshire.gov.uk)

## Your Town Councillors


**Marianne Westwood, Mayor**

t: 01608 662223

e: marianne.westwood@shipstontowncouncil.org


**Gerry Kelly, Deputy Mayor**
*Planning Committee Vice Chair*

t: 07471 687720

e: gerry.kelly@shipstontowncouncil.org


**Ian Cooper**
*Finance Working Group Chair*

t: 01608 663785

e: ian.cooper@shipstontowncouncil.org


**Paul Tesh**
*Planning Committee Chair*

t: 07711 433566

e: paul.tesh@shipstontowncouncil.org


**John Dinnie** *Heritage, Amenities and Leisure Projects Working Group Chair*

t: 01608 664590

e: john.dinnie@shipstontowncouncil.org


**Jo Barker**

t: 07748 968712

e: jo.barker@stratford-dc.gov.uk (for town and district matters)


**Peter Cox**
*General Purposes Working Group Chair*

t: 07973 442552

e: peter.cox@shipstontowncouncil.org


**Tony Booth**

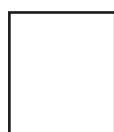
e: tony.booth@shipstontowncouncil.org


**Hilary Kelly**

e: hilary.kelly@shipstontowncouncil.org


**Sarah Beckett**

e: sarah.beckett@shipstontowncouncil.org


**Vacancy**

**Vacancy**

To find out more about becoming a councillor, contact the Town Clerk


**Vacancy**

## Useful Contacts

Community Links Transport	01789 264491
Shipston Library:	0300 5558171
- 24/7 renewal line	01926 499273
Highways customer services	01926 412515
Severn Trent Emergency Line:	0800 7834444
Shipston Volunteer Transport Scheme	01608 663122
Shipston Leisure Centre	01608 662354
Shipston Medical Centre	01608 661845
- Out of hours	111
Shipston Forum	01295 788655
Shipston Link (local transport)	01386 593446
Shipston Recycling Centre	01926 412593
Stratford District Council	01789 267575
Townsend Hall	07514 704057
Warwickshire County Council	01926 410410
UCHW Hospital	024 7696 4000
Warwick Hospital	01926 495321
<b>Local police (non emergency)</b>	<b>101</b>
Shipston Police Safer Neighbourhood Team:	01789 444670
shipston.snt@warwickshire.police.uk	
<b>Churches of Shipston:</b>	
Stour Valley Baptist	01608 664876
Our Lady & St Michael	01608 685259
St Edmund's	01608 661210
Methodist Church	01295 257193

**Shipston-on-Stour Town Council**

New Clark House, West Street, Shipston-on-Stour, CV36 4HD

**Town Clerk**

t: 01608 662180 e: clerk@shipstononline.org

**County Council Contact:**
**Councillor Jo Barker**

t: 07748 968712 e: jobarker@warwickshire.gov.uk

**District Council Contacts:**
**Councillor Jo Barker (Shipston South)**

t: 07748 968712

e: jo.barker@stratford-dc.gov.uk

**Councillor Trevor Harvey (Shipston North)**

t: 07969 167720

e: trevor.harvey@stratford-dc.gov.uk



## Something exciting to share?

If you have a story that's relevant to Shipston residents, please contact the editor, Chris Rowland on 07983 342567 or email: [forum@shipstononline.org](mailto:forum@shipstononline.org)

To request posts on the council's Facebook and Twitter feeds, contact Peter Cox.

**Forum copy deadline:**
**Second Monday of the month**

- but the sooner you can notify the editor of a potential story the better.

The Shipston Forum is produced monthly by the Town Council.

While every effort is made to ensure information is accurate, the Town Council and its contractors do not accept responsibility for material submitted by readers or third parties and does not endorse any organisation or event publicised. Contributions may be edited to fit available space.

# We are recruiting on call firefighters NOW!

## **Daniel**

**"Each incident I attend is different; no job is the same...we are like a big family and I definitely feel like a valued member of the team."**



## **Stuart**

**"Age is not a barrier to becoming an on-call firefighter, it's your attitude and ability to do the job that matters."**



**For info on how to apply visit  
[www.warwickshire.gov.uk/oncallfirefighters](http://www.warwickshire.gov.uk/oncallfirefighters)  
or scan the QR code.**



**@WarksFireRescue**



**/warwickshirefireandrescueservice**