



# Shipston Forum

shipstontowncouncil.org



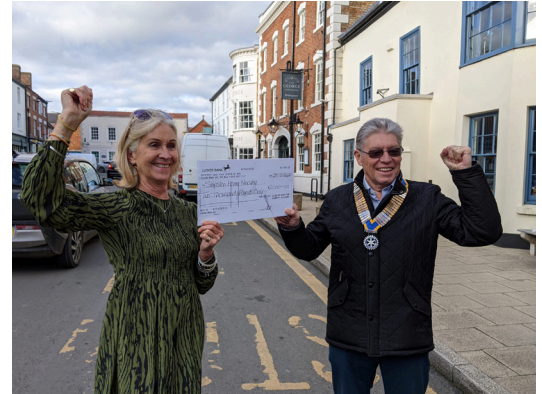
March 2021

## Shipston Rotary award over £2,600 to good causes



Recently Shipston Rotary have made a further £2,000 donation to Shipston Home Nursing (Right: Rebecca Mawle, Head of Community Nursing at Shipston Home Nursing with Rotary president Stuart Mclean). In addition, the funds raised from the Tree of Life (£632.20) have been presented to Acorn's Children's Hospice (Left: Rotarian Avryl Thompson who organises the Tree of Life).

*N.B St Edmunds church is closed at present, however, the Book of Life will be there when it reopens.*



## Solar Together launched by County Council

Warwickshire County Council has launched Solar Together, a new scheme to assist residents to purchase solar panels for their homes. Run in partnership with independent experts iChoosr, the group-buying scheme will make it easier to find trustworthy installers and buy high-quality solar panel systems at a competitive price. It also comes with the option to add battery storage to the new or existing solar panel installations.



**SOLAR GROUP BUYING**  
A collective approach for a better deal

Anyone interested in the scheme can register their interest before 23 March 2021 for free and without any obligation at: <https://www.solartogether.co.uk/warwickshire/home>

## On-street electric vehicle chargers proposed for Shipston

During the February Town Council meeting, Councillors discussed a proposal from Warwickshire County Council to apply for grant funding to install electric vehicle charging facilities on the High Street and/or Sheep Street. In either location, four dual-headed charging points would allow for up to eight vehicles to be charged at once.

The maintenance costs of the charging points would be borne by the operator and Warwickshire County Council would receive a 5% revenue share. Following the initial three year contract, the County Council would have the opportunity to renew for 12 months on two occasions, before going to a competitive re-tender.

While some concerns were expressed about vehicles occupying parking spaces for an extended period, it was felt that on balance this was a great opportunity for the town and both schemes should be supported, with a preference for the High Street if funding was only available for a single location. Councillors were particularly keen to explore future grant opportunities for off-street charging provision as it was felt this would be the most beneficial solution. The Planning Committee will review the proposals and report back.

## Warwickshire County Council has unveiled colourful logos for each of their new community-named gritters



## Mayor's column



After the enforced inactivity of January and February, we finally have been shown the route out of lockdown over the next few months. For some of us this a huge relief. Finally, we can start to make tentative plans for seeing family and friends, booking holidays and even going to the pub! For others, it is all a frustratingly slow process with weeks to go before any significant improvement to freedom happens. For others still, the prospect of life opening up in any respect will be a frightening prospect after months of enforced shielding. Whatever your feelings about this return to 'normal' please be mindful of others who may not share your point of view.

2021 is Census year. The Census comes around every 10 years to provide a snapshot of the people and households in Britain on a particular day – in this instance, Sunday 21st March. This year it should provide fascinating details of how the pandemic has affected people's health, education, relationships and employment. It's important that we all complete and return the Census as each piece of information will be used to shape future policy on housing, schools hospitals etc. Since this will be taking place during the last days of total lockdown at least filling in the form will offer something to do for half an hour!

Having filled in your Census form the next thrilling exercise will be to fill in the forthcoming Local Housing Needs Survey. This has been commissioned by Shipston Town Council to provide detailed information about the future housing needs of Shipston residents young and old. It will stand alongside the Neighbourhood Plan to support building that we actually want and need, and help resist unwanted developments. To tempt you to return your questionnaire EVERY COMPLETED SURVEY returned on time will be entered into a PRIZE DRAW with a chance to win one of 3 cash prizes of £100. Winners will be contacted after the survey deadline and, subject to their agreement, will be announced in a future edition of the Forum.

**Sheelagh Saunders**

## Healthy Ageing

Warwickshire County Council in partnership with the NHS, has launched a microsite providing advice about health, wellbeing and exercise for residents aged 65 plus. The Healthy Ageing microsite ([www.warwickshire.gov.uk/healthy-ageing](http://www.warwickshire.gov.uk/healthy-ageing)) is packed full of information, advice and even core strengthening exercises, to help residents remain active and alert.

The pandemic has led to a decline in physical activity for many older people, increasing their future risk of falls and trips, and consequently being admitted to hospital. It is hoped that the Healthy Ageing website will act as a preventive measure, aiding people who may be beginning to feel unsteady on their feet or are concerned about falling to take action to reduce their risk of falling and avoid a long stay in hospital.

The website has been designed to be accessible and easy to navigate, for use by individuals or with support from family members or support workers.

## Census 2021 – Sunday 21st March

Understanding the needs of the nation helps everyone from central government to local organisations, such as councils and health authorities, plan and fund public services across England and Wales. Census outputs inform where public funding is spent on services like transport, education and health.



Information from the Census makes a difference to the life of every single person in Warwickshire as Census data is used to plan things as diverse as maternity services, apprenticeship schemes, new bike lanes and nursery spaces.

Privacy is also respected throughout the process. All data is made anonymous and personal information is locked away for 100 years, so it cannot be seen by government officials dealing with individual applications for support or influence the payments or services someone receives. The anonymised census results are available 12 months after the census takes place.

Households will begin receiving letters with online codes in March explaining how they can complete their online census. People can also request a paper questionnaire if they'd prefer to complete the census that way. In areas where lower online completion is expected, around 10% of households will receive a traditional paper form through the post.

There is plenty of help available, with people also able to complete the census over the phone with assistance from trained staff via the ONS' freephone contact centre. The ONS also aims to provide in-person support to complete the census online through Census Support Centres where it is safe to do so.

Census 2021 will include questions about sex, age, work, health, education, household size and ethnicity. For the first time, there will be a question asking people whether they have served in the armed forces, as well as voluntary questions for those aged 16 and over on sexual orientation and gender identity.

For more information and advice on how to answer the questions, visit [census.gov.uk](http://census.gov.uk).

Find out more at [www.census.gov.uk](http://www.census.gov.uk)

   Follow @Census2021



## News from Shipston Town Council's February meeting



**Local Government Reorganisation:** A report by Deloitte, commissioned by Stratford and Warwick District Councils, supports the idea of merging the two authorities into a "super district" and generating significant financial savings.

**Local housing needs:** The draft survey prepared by ARC4 (consultants contracted by the council to compile a new Housing Needs Survey) has been reviewed by the Planning Committee. Some amendments have been suggested to make the survey more user friendly and these are being reviewed by ARC4 before the survey is finalised.

**Draft Gypsy and Traveller and Travelling Showpeople Supplementary Planning Document:** An emergency Planning Committee meeting is being called to formulate a response to the consultation.

**Cemetery:** The Council agreed to seek quotes for a surveyor to inspect the chapel and provide a condition report and approximate costs for necessary repairs. It was agreed that Lawns 2 Mow would renew the chapel and cemetery entrance driveway with granite stone.

**New Clark House Flagpole:** A new flagpole will be installed at the Town Council offices following reliability issues with the current installation. After paying for several repairs in recent years and discovering that further work was needed, the Councillors voted unanimously to replace it.

**Queens Avenue Play Area:** Residents in the vicinity of of Queens Avenue will be invited to express their opinion on potential replacement play equipment.

**Sheep Street Bin:** A resident's request to remove a waste bin from Sheep Street was denied, however, the situation will be monitored and the decision will be revisited if it is deemed to be causing problems.

**Kickstart Employees:** The Council agreed to continue exploring the possibility of hiring up to two additional employees through the Government Kickstart scheme once the Town Council offices are operational again. An offer of grant funding will be accepted in principle.

## Shipston Proms Cancelled

Shipston Proms deeply regrets that the traditional Proms fortnight will not be held in June 2021. Although the government is optimistic that live events can take place this summer, circumstances continue to be unpredictable and the risk of potential cancellation is too high to plan a fortnight of live music. Our finances are not infinite, and we really want to make sure that future proms events can go ahead, so that was also a major factor in making the decision.



The Committee are very keen to have some form of live music in 2021 as we have all missed the buzz of hearing artists perform, so we are looking to put on a weekend of music later this summer. The Proms will come back strongly in 2022 with bands already secured for the Launch & Final nights.

## Proms Quiz



The Proms committee has compiled a short quiz to test readers' knowledge of Proms' performers over the last few years. The prize will be a bottle of red or white wine, the winner's choice. Please email [susanperry@tiscali.co.uk](mailto:susanperry@tiscali.co.uk) with the answers.

1. Which popular Cheltenham based band played at Launch Night in 2016. Was it 'King', 'Duke' or 'Earl'?
2. Laurence Jones from Brailles is a successful blues musician. In what year did he achieve the accolade of Top European Blues Guitarist?
3. What is the name of Kent DuChaine's infamous National Steel guitar?
4. The Ska band Selector who had a hit with 'On my Radio' performed on the Last Night in 2012. When did the group originally get together?
5. Charles Matthews has played organ recitals during the Proms. Which Vaughan Williams song did he recently play on television to mark its 100th anniversary?

For up to date information on the Proms please visit <https://www.shipstonproms.org/> or <https://www.facebook.com/ShipstonProms>

## Age Concern Shipston and District

Age Concern Shipston and District have been actively keeping in touch with their 40 Lunch Club customers by delivering gifts and cards and by being at the end of the phone. The regular three Lunch Clubs a week at Rainbow Fields and Stour Court have had to cease, but the frozen meals and puddings which were usually served have been donated to the Shipston Food Bank where they have been gratefully received.

While the Lunch Club and Outings have had to be cancelled, a grant scheme is being relaunched, offering up to £200 to over 70s living within 10 miles of Shipston. The funds can be used to make life easier, more enjoyable or to alleviate a specific problem.



## AGE CONCERN SHIPSTON ON STOUR & DISTRICT

### GRANT AVAILABILITY



Age Concern Shipston on Stour & District can offer grants of up to £200 to fund identified needs of residents in the Shipston area. Grants will be made for needs identified in order to make life easier and more enjoyable or to alleviate specific problems.

Certain criteria must be met in order for a grant to be made:

#### **To be eligible for a grant, residents must:**

1. Live permanently within 10 miles of St Edmund's church (Shipston parish church).
2. Live either in their own home, in a care home or sheltered accommodation.
3. Be over the age of 70 on the day that a grant request is made.
4. Be in receipt of a state benefit other than basic state pension (evidence may be requested).
5. Have readily available funds of less than £5,000.

To apply for an application form contact :

David Roache, Fallowfield, Lower Tysoe, WARWICK CV35 0BY

Tel 01295 680309

email [djroache@buzzinternet.co.uk](mailto:djroache@buzzinternet.co.uk)



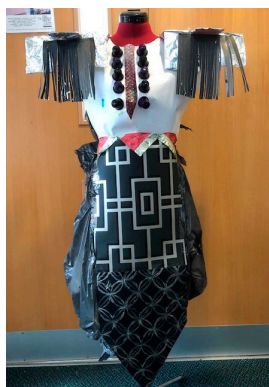
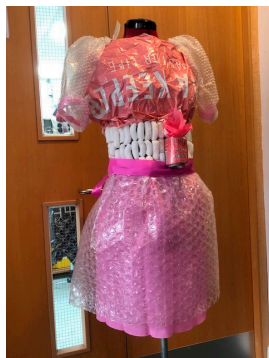
## Shipston High School

Shipston High School has continued with remote learning throughout the initial months of the year, and students continue to impress with the work they are producing under unusual circumstances.

Academic learning online has become increasingly familiar to staff and students, and students are fully focussed on their work. Student access to laptop computers has improved thanks to generous donations from local organisations and individuals; on behalf of all of the students and families, thank you very much to everyone who has offered assistance. At the time of writing, we have managed to equip all students who need a device.

Some subjects are more challenging than others to study away from school, and staff and students have created inventive solutions. The textiles team have created some amazing fashion designs using recycled household objects, placing a focus on inventiveness and sustainability.

Art students have also been busy, and the school website hosts a gallery of images from earlier in the year. I am delighted that the photographs of the work students are currently completing whilst at home show impressive talent and a good deal of enjoyment in the simple pleasure of being creative.



The PE department has encouraged students to exercise through the school 'Around the World' challenge, which enabled students to record distances walked, cycled or jogged and then contribute these to their House team total. This has produced some really enjoyable and friendly competition, whilst helping to keep everyone motivated to exercise.

PE colleagues have also been keeping staff on their toes, literally, with a series of fun Friday dance videos which have provided some light-hearted enjoyment for everyone. The school Twitter page (@ShipstonHighPE) is the place to see these if you want something to make you smile. Most importantly, these activities demonstrate the positive and team-spirited attitude of everyone at the school as we navigate these difficult times.

We all look forward to more normal times in school, and that includes welcoming new Year 7 students in the Autumn. During March families will be informed of their school place allocation by the Warwickshire County Council schools admission service, and we look forward to meeting and welcoming our new intake just as soon as circumstances allow.

Finally, the school community is very aware of the challenges that so many people are facing at the moment. Within school, we are focussed on patience and kindness towards each other as we manage the challenges of the moment and thank everyone who has taken the time to share a kind word or act with the school - thank you.

**Gavin Saunders, Headteacher**

## Former Chairman granted Centenary Award following 18 years of service

In the autumn of 2020, to commemorate the centenary of the Royal British Legion (RBL) in 2021, a special Centenary Award Programme was announced for RBL members. The Shipston on Stour Branch nominated Richard Adams, who stood down as Chairman at last October's AGM after an amazing 18 years leading both the Branch and the Poppy Appeal.

The nominations from all of the Warwickshire branches were assessed at County level and just one winner was chosen for each of the following categories; Collaboration, Service, Passion, Valuing Our People, and Excellence

We are proud to announce that Richard was one of the five winners, winning the Collaboration category, and over the weekend received a special Certificate and Lapel Badge. On receipt of his award he wrote:

"I was delighted (and surprised) to receive today a Certificate & Lapel Badge. A great honour which I deeply appreciate. I looked the Centenary Award initiative up online, as I had no inkling of it prior. I am humbled that the Committee decided to [nominate me], and I thank you all for thinking enough of me to put my name forward. Please pass on my thanks to the others".

In addition to the Certificate and Badge, Richard will also be invited to a special winners event that is yet to be announced and his name is still in the hat for the Regional, National and Overall Winner elements of the Award Programme.



### The Townsend Hall

The Club Winners are:



#### January 2021

- 1st. No 121. £15
- 2nd. No 58. £10
- 3rd. No 17. £5

#### February 2021

- 1st. No 10
- 2nd. No 19
- 3rd. No 65

#### March 2021

- 1st, No 61
- 2nd, No 10
- 3rd, No 75

Congratulations on your winnings!



Hello Little Shipstonians! We hope you managed to have a go at completing the “you are amazing” activity and you were able to identify lots of positive things that make you unique and fabulous! This month’s feature is all about the arrival of Spring. Don’t you think it’s a wonderful time, with new beginnings all around us? To celebrate the start of the season we have created a “Spring Trail” for you to do with a friend or a grown-up. Getting outside and exploring our surroundings is very important for our emotional health and well-being. In the activity below, you will find pictures and a description of all the things you can discover around our town, with a box to tick once found. On the next page is a drawing of our little town for you to colour in – why not add some clouds or a rainbow? There is also space for you to draw some flowers at the front of the picture, which would frame it beautifully. So, there is lots for you to do this month – have fun and see you soon!

# The Shipston Spring Trail



← A bumble bee  
bumbling ☐



← A cyclist  
peddling ☐



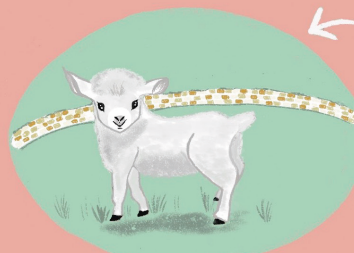
← Sea creatures  
as fossils ☐



← Blossom  
blossoming ☐



← Animal tracks  
appearing ☐



← Lambs  
grazing ☐



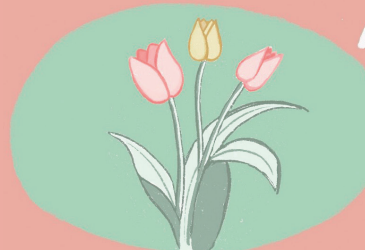
← A butterfly  
feeding ☐



← A church  
clock  
ticking ☐

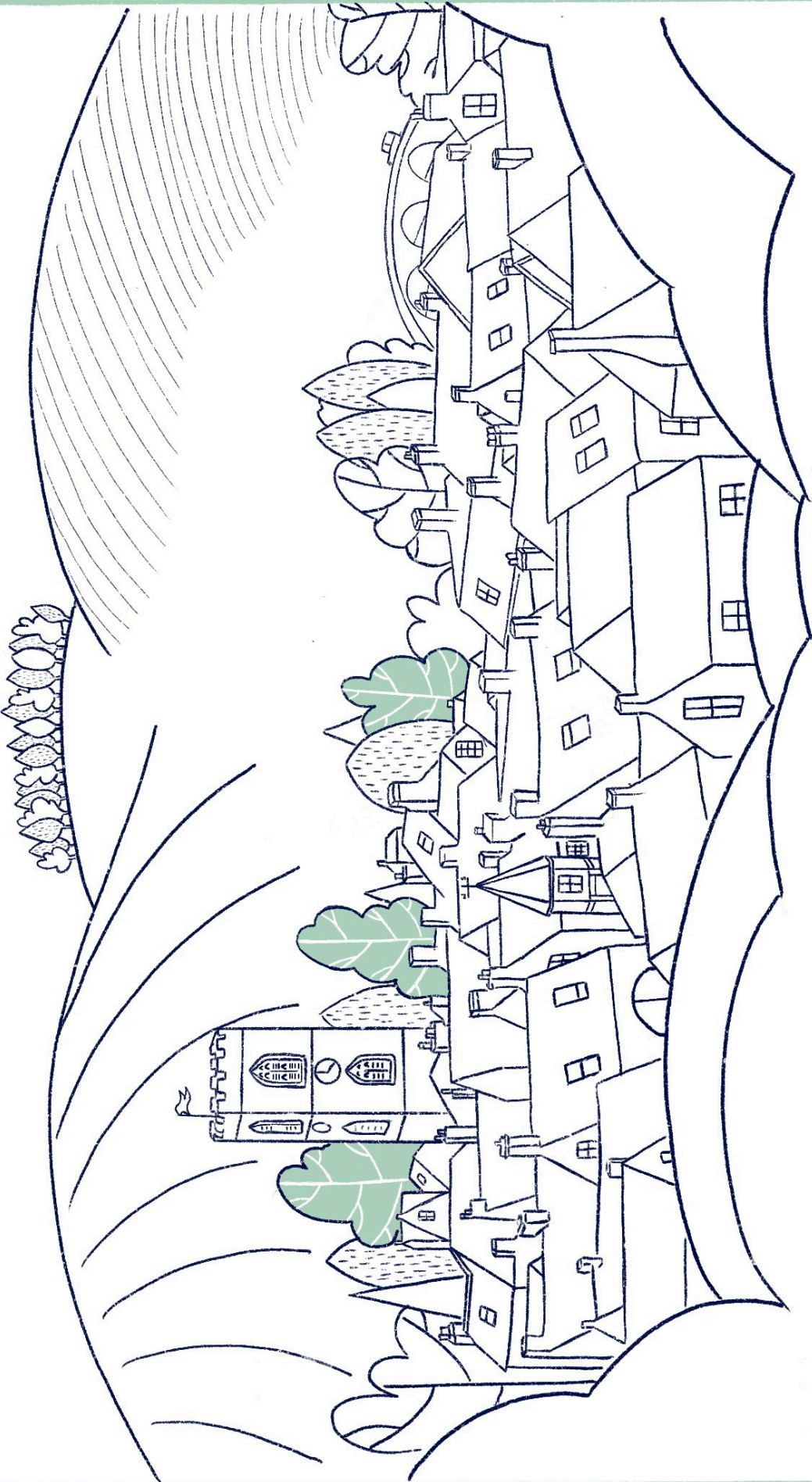


← A bird in  
a bush ☐



← Spring flowers  
in bloom ☐





## U3A Club Report

Shipston's U3A continues to thrive in these difficult times. Despite everything, a lot has been done to ensure that existing groups can continue to meet and enjoy each other's company. Not in person of course, but via the technology that has come into its own during this pandemic.

Zoom has provided a great resource: it's easy to use and has helped to bring a spark of light into the otherwise grey days of lockdown. Help and advice have been given to groups enabling them to set themselves up and is still available to anyone who would like to have a go. In addition, just using email has kept some groups connected. The Art Appreciation group is just one example.

Losing yourself in a book is something everyone is doing more of at the moment, and the Reading Group has met since Warwickshire Libraries re-opened last summer, and once a month, members have got together and discussed the books they've read. The Mindfulness Group has been meeting weekly since the beginning of the first lockdown, and language groups, Latin, Ancient Greek and Spanish are all getting together online to continue their various journeys. The Painting and Drawing Group has also been continuing very successfully and is now hoping to start up on Zoom. There are many examples of their talent to be seen on our website (see below for address).



One new group even began during the year – Walking from Shipston started in the summer and continued with weekly walks in and around Shipston until the January lockdown intervened.

General meetings of members are continuing to take place once a month online, with talks including Gilbert & Sullivan, Father Christmas, and the History of Holidays (very pertinent when we are all dreaming of them at the moment).

These are just some of the examples of the good things going on in your Shipston U3A, and it's enabled new friendships to be made or existing ones to continue, helping to keep loneliness or disconnection at bay. Nobody would pretend that meeting via technology is better than the real thing. It may be that Zoom for Shipston's U3A will continue after this epidemic has become just a bad memory but that is in the future. For now, it is creating an opportunity to catch up, have a laugh, and exchange experiences and all the while increasing knowledge or seeking some calm in this age of anxiety.

If you would like more information see our website <https://u3asites.org.uk/shipston-on-stour>, or contact Membership Secretary Anne Watts on 01608 662414 [watts456@btinternet.com](mailto:watts456@btinternet.com). For U3A members needing guidance on the use of Zoom, please contact Robin Furneaux on [robin.furneaux@gmail.com](mailto:robin.furneaux@gmail.com) or Lynne Richardson on [richardsonlynne@yahoo.co.uk](mailto:richardsonlynne@yahoo.co.uk).

## Probus Report

Shipston Probus again had a most stimulating Zoom meeting on January 29th, a thought-provoking presentation on 'Global Warming' by an old friend of Probus, Ken Ingamells.



Despite a projected cooling of the earth due to cyclical movements of the earth's axis and orbit we are experiencing an average 0.3-degree centigrade rise in temperature every decade. Ken outlined the main gases that trap heat: water vapour, ozone, carbon dioxide, CFC's, methane, sulphur hexafluoride, nitrous oxide and nitrogen dioxide. In particular, we need to reduce the emission of carbon dioxide by 60% and methane by 20% to significantly reduce the rate of increase, or ice caps could vanish, ocean currents reverse, sea-level rise 10 to 30 metres, and one-third of the UK landmass will be flooded etc!

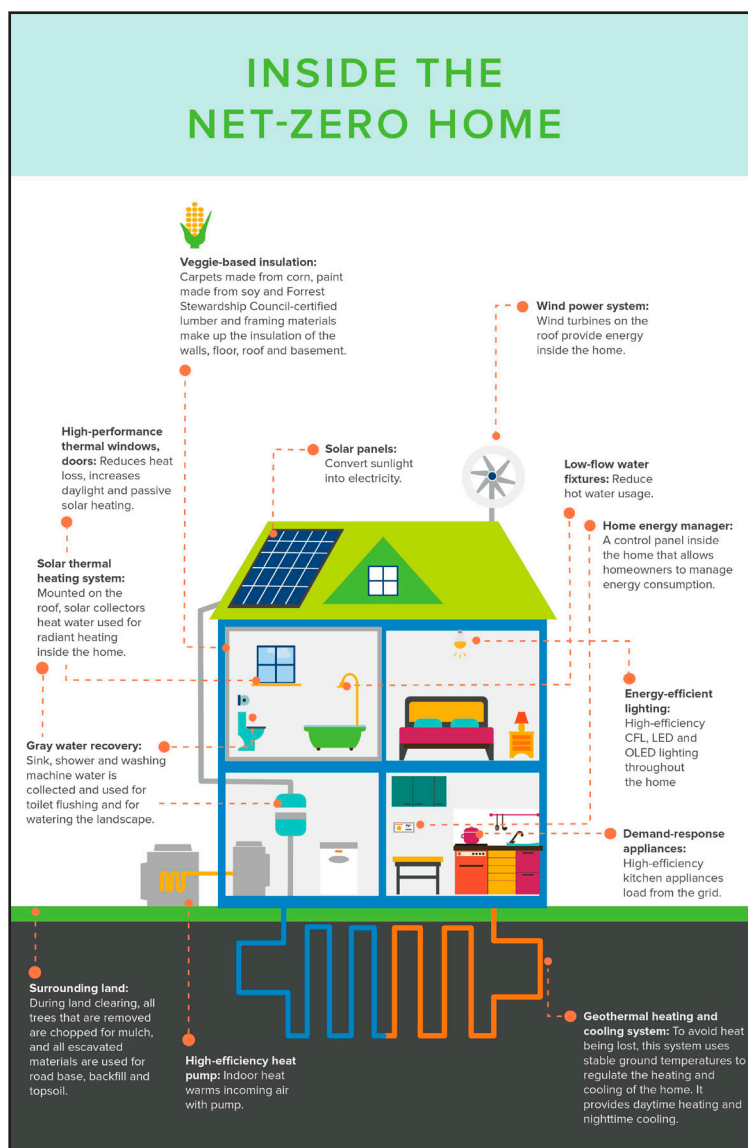
What are the solutions? Wave power: not sufficiently efficient; Solar panels: more efficient, but produce CO<sub>2</sub> in the manufacture; Wind turbines: need huge numbers and erratic; Nuclear power: fission is 'dirty', fusion much better but in early stages of development; Geothermal: energy from within the earth, it is proposed to lay a cable from Iceland to the UK; Ourselves: less consumption, especially of fossil fuels, reduce the rate of population increase, less tree cutting etc.

Our next Zoom meetings

Guests are most welcome. For details on how to join in with our Zoom meetings and obtaining the Passcode, please contact Tony Joint on 01608 663407 / 07711 310272 or email [tonyjoint73@hotmail.com](mailto:tonyjoint73@hotmail.com)

12th March: Steve Bruce 'The Hoarder Next Door.'  
Zoom ID 872 1108 8694

26th March: Dennis Harvey – "Power for the Future."  
Zoom 843 1019 9198





## Shipston Primary School



### Brailes C of E Primary School applies to join the Stour Federation Multi Academy Trust

When a school becomes part of a multi-academy trust, it is no longer alone. It becomes part of a wider family in which the trust takes collective responsibility for the school and supports it through all the challenges and opportunities along the road. The pandemic has brought to light the need for a shared vision on a scale we have not seen before. As a partnership, we have redefined our curriculum towards a blended approach for simultaneous remote learning and face to face teaching in school; we have pulled together to support the mental health and well being of staff, pupils and families. As a result, we are even closer and stronger. Our three schools have been able to mount such a speedy response to this extraordinary challenge because our structures are solid, our practices are sound and our ethos and culture is one of collaboration for excellence. This strong model will see us through the challenging year ahead and beyond in building back better.

Having worked in partnership since September 2015 with Acorns Primary School and Shipston Primary School, the governing body of Brailes C of E Primary School agreed before Christmas to apply to the Department for Education to convert to academy status, to formally join The Stour Federation Multi Academy Trust. The Stour Federation Board of Trustees have agreed to Brailes joining the Trust and Coventry Diocese have granted permission also. We are working towards a conversion before the end of the 2020-21 academic year.

The next part of the process is consulting with staff, parents and the wider community. Detailed information relating to the proposed academy conversion can be found on the school's website: <https://bit.ly/3kwOISK>

Due to the pandemic, the consultation period will be virtual for comments and questions from parents, carers and the wider community via this link - <https://forms.gle/5wmvyzWAsKvSiLu98>

Any comments which are made about the proposals will be considered by the Brailes governing body and the Stour Federation Board of Trustees before a final decision is made. The consultation period will last until Friday 19th March.

### REMOTE LEARNING

Children across the country, and the world, have been dealing with enormous upheaval in their personal lives and a scarily shifted global landscape. Comparisons can be easily drawn with the disruption World War 2 brought to school education. City school closures and evacuated children, not to mention the mental health challenges, meant many missed out on school completely. In response, the education system was rapidly reformed, with the House of Commons passing the Education Act in 1944, which aimed to remove inequalities and provided free secondary education for all pupils. There will certainly be educational reform following the pandemic, with gimmicky proposals such as changing the length of the school day, moving term dates and starting summer schools all being suggested in the press recently, although I believe the focus should be on the QUALITY of a broad education, not quantity. The last thing we want to do is grind out more hours of learning from tired children with the likelihood of diminishing returns.

Remote learning is not a new phenomenon and it's certainly not just learning online. In the 1940s polio outbreak, children were given lessons over the radio. Indeed, the BBC School

Radio was launched in 1952, a pioneer of education for children through radio broadcasting. I remember being at primary school and needing to be in the hall at a specific time for music and movement lessons on the radio!

Many children in Australia who live in remote areas have for many years been schooled by a combination of homeschooling from parents and via the School of the Air, a uniquely Australian way of getting an education by using a radio receiver to communicate with the school teacher and classmates. The first School of the Air was established at Alice Springs in June 1951 and School of the Air still offers early secondary education and primary education to children in Australia's remote locations, where a child might live 300km from their nearest school. Originally conducted through a radio network maintained by the Royal Flying Doctor Service, faster and more efficient internet technology now offers each student direct contact with a teacher. Each student typically receives one hour of group or individual lessons with their teacher, spending the rest of the day working through the assigned materials with a parent, older sibling or a hired home tutor.

Our blended learning approach has worked very effectively and the feedback from parents has been overwhelmingly positive with many, many wonderful comments that our teachers will cherish. All staff are in school with over 25% of pupils. Teachers and teaching assistants continue to teach children in school whilst simultaneously supporting children learning from home on the Seesaw platform by pre-recording video tutorial lessons to use with paper-based learning packs and arts & crafts materials sent out to families. We also regularly offer Google Meet video conferences for maintaining social connections and providing feedback on their learning. Assemblies from local clergy and senior leaders are virtual, along with fitness videos made by our PE coaches for children to join in with at home.

In 1905, when tuberculosis plagued the United States, and Americans lived in deadly fear of the disease, expert S. Adolphus Knopf addressed the American Academy of Medicine, noting that windows in American classrooms only opened halfway and should be immediately replaced with French-style windows to "permit twice the amount of foul air to go out, and of good air to come in." He stated that every school must have a large playground and classroom ventilation, schoolrooms were to be washed daily, and the curriculum was to include as much outdoor instruction as possible.

Today, ventilation is just as relevant. School is chilly with windows open to keep air flowing, amid growing concerns about airborne transmission of Covid-19. Our systems of control continue to include regular hand washing, social distancing and utilising our outdoor spaces where possible, including playing in the snow!

Our schools are so grateful to our local charities and local communities for making donations towards additional Chromebooks for our children. With the number of mobile devices now available to schools and the proficiency to which our teachers, children and parents have worked in such innovative and creative ways, I'm sure there will be a push to embed digital tools and approaches more firmly in our school systems and practices. I would welcome this move as our philosophy has always been about leveraging digital effectively.

**Christian Hilton, Executive Headteacher**

## District Council update

This month not only have we passed the budget - I'm afraid the District Council's share of the Council Tax is going up (as are the shares for the County Council and Police), but we also voted to progress the merger of Stratford District with Warwick District Council to the consultation stage. Only 1 councillor out of the 80 across both districts voted against it! We are convinced that this is the way forward for our districts - to work ever more closely together - for the good of all of us. A "super district" will give us more clout for the things we actually want and need!

Also this month, I saw two really important strategies go through Full Council - the Health and Wellbeing Strategy and the Homelessness Strategy. The first is the culmination of work across Warwickshire with the help of Sir Chris Ham, to shape where we go after the "Year of Wellbeing". Wellbeing as a concept is now a key element of what we do - particularly focussing on mental health improvement and the wider determinants of health - such as environment, housing and educational opportunity.

The Homelessness Strategy is derived from the desire to end rough sleeping and homelessness. In Stratford District, we are working with partners on the Fred Winter Centre, a hostel and moving on accommodation. There is, for me, no way that in a civilised society, people should be sleeping on the streets.

I'm pretty excited now the Prime Minister has published the roadmap out of covid. Soon - a cuppa at the George with you will be a reality.

**Jo Barker, District Councillor, Shipston South**

07748968712 | [jo.barker@stratford-dc.gov.uk](mailto:jo.barker@stratford-dc.gov.uk)



## County Council update

Probably the most / least exciting (delete as appropriate) news I have to share it that the County Council election will go ahead on Thursday 6th May. However you vote - democracy is carrying on - but it will certainly be a different sort of campaign. Just remember to take your own pen to the polling station!

I have spent several days - or so it seems - in budget meetings, culminating in the Warwickshire County Council full council to agree the budget on Monday 8th February. For me, the highlights are increased spending on mental health support in the community, funding for those affected by domestic violence and a living well with dementia strategy. For many of you, the best news is a big investment in drain and gully clearing - as ever let me know if you have a blockage!

The County Council is also investing in the financial recovery of Warwickshire's businesses and is forming a property company - so we can use Warwickshire County Council owned land to build the houses and businesses we need. Altogether, we are remarkably lucky that because the County had reserve funds, we were well placed to bounce back as strongly and quickly as possible from the covid crisis. I am feeling remarkably upbeat - and I hope you feel the same way! I shall be hosting "house meetings" online - if you would like to join - please do get in touch and we can chew the virtual fat over a cuppa!"

**Jo Barker, County Councillor**

07748 968712 | [jobarker@warwickshire.gov.uk](mailto:jobarker@warwickshire.gov.uk)

## Shipston Medical Centre

Shipston Medical Centre and South Warwickshire NHS Foundation Trust have together submitted a planning application to develop the Ellen Badger site, which in the first phase will include a new GP surgery and community Health and Wellbeing centre.

This is an exciting, innovative project that will bring our community together in promoting wellbeing. It will not only be a facility treating illness but a place for Shipston and the wider community to come together and help support health promotion and wellbeing, mentally and physically. It will also be a place for community groups to meet with access to the river and views beyond.

With the wonderful sense of support and community spirit we have, we are sure this can be an exceptional facility, making a real difference in reducing chronic physical and mental health issues.

Recently there have been some concerns within our community around the fact that

a two-phase approach is being pursued, with the inpatient facility planned to be part of the second phase. The phased approach has become necessary as there are a number of projects happening outside of this development that will impact future plans. We also expect that learnings from the pandemic may change the physical requirements of inpatient beds and as such this needs to be understood before the building of the facility occurs.

The whole project could have been delayed pending the above, but it was felt to be better to build in two phases with the GP surgery and Health and Wellbeing Centre (with some hospital services continuing) and further hospital-based services coming in a second stage. Planning permission has been sought for both phases.

The Medical Centre desperately needs more space to provide safe and effective services, and the pandemic

has highlighted further this need.

The partners at the Medical Centre have been trying to provide a new Health and Wellbeing Centre for Shipston and the surrounds for well over 10 years. This is the closest we have been with funding approval for the GP part and we need this project to go ahead in order to continue providing a wide range of services for our community.

The option of retaining all or parts of the existing Ellen Badger Hospital have been extensively explored but unfortunately, it is not viable to do so and provide a facility fit for the communities needs for the future from the existing estate. We are therefore looking at other ways we can preserve its heritage.

Community support is needed to get this to the finishing line producing the best facility the community deserves.



Shipston Medical Centre



## Your Town Councillors


**Sheelagh Saunders, Mayor**
*Staffing Working Group Chair*

t: 07800 889947

e: sheelagh.saunders@shipstontowncouncil.org


**Ian Cooper, Deputy Mayor**
*Finance Working Group Chair*

t: 01608 663785

e: ian.cooper@shipstontowncouncil.org


**Ronnie Murphy**

t: 01608 664518

e: c/o clerk@shipstononline.org


**Paul Tesh**
*Planning Committee Chair*

t: 07711 433566

e: paul.tesh@shipstontowncouncil.org


**John Dinnie**

t: 01608 664590

e: john.dinnie@shipstontowncouncil.org


**Jo Barker**

t: 07748 968712

e: jo.barker@stratford-dc.gov.uk (for town and district matters)


**Fay Ivens**

t: 01608 662133

e: c/o clerk@shipstononline.org


**Peter Cox**
*General Purposes Working Group Chair*

t: 07973 442552

e: peter.cox@shipstontowncouncil.org


**Marianne Westwood**

t: 01608 662223

e: marianne.westwood@shipstontowncouncil.org


**Peter White**
*Communications Working Group Chair*

t: 07792 507168

e: peter.white@shipstontowncouncil.org


**Gerry Kelly**
*Planning Committee Vice Chair*

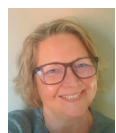
t: 07471 687720

e: gerry.kelly@shipstontowncouncil.org


**Peter Cowley**
*Heritage & Leisure Projects Working Group Chair*

t: 01608 664241

e: peter.cowley@shipstontowncouncil.org


**Sarah Timms**

e: sarah.timms@shipstontowncouncil.org

## Useful Contacts

|   |               |
|---|---------------|
| Community Links Transport                 | 01789 264491  |
| Shipston Library:                         | 0300 5558171  |
| - 24/7 renewal line                       | 01926 499273  |
| Highways customer services                | 01926 412515  |
| Severn Trent Emergency Line:              | 0800 7834444  |
| Shipston Volunteer Transport Scheme       | 01608 663122  |
| Shipston Leisure Centre                   | 01608 662354  |
| Shipston Medical Centre                   | 01608 661845  |
| - Out of hours                            | 111           |
| Shipston Forum                            | 01295 788655  |
| Shipston Link (local transport)           | 01386 593446  |
| Shipston Recycling Centre                 | 01926 412593  |
| Stratford District Council                | 01789 267575  |
| Townsend Hall                             | 07514 704057  |
| Warwickshire County Council               | 01926 410410  |
| UCHW Hospital                             | 024 7696 4000 |
| Warwick Hospital                          | 01926 495321  |
| <b>Local police (non emergency)</b>       | <b>101</b>    |
| Shipston Police Safer Neighbourhood Team: | 01789 444670  |
| shipston.snt@warwickshire.police.uk       |               |
| <b>Churches of Shipston:</b>              |               |
| Stour Valley Baptist                      | 01608 664876  |
| Our Lady & St Michael                     | 01608 685259  |
| St Edmund's                               | 01608 661210  |
| Methodist Church                          | 01295 257193  |

**Shipston-on-Stour Town Council**

New Clark House, West Street, Shipston-on-Stour, CV36 4HD (Currently closed to the public)


**Alison Packer, Town Clerk**

t: 01608 662180 e: clerk@shipstononline.org

**County Council Contact:**
**Councillor Jo Barker**

t: 07748 968712 e: jobarker@warwickshire.gov.uk

**District Council Contacts:**
**Councillor Jo Barker (Shipston South)**

t: 07748 968712

e: jo.barker@stratford-dc.gov.uk

**Councillor Trevor Harvey (Shipston North)**

t: 07969 167720

e: trevor.harvey@stratford-dc.gov.uk



## Something exciting to share?

If you have a story that's relevant to Shipston residents, please contact the editor, Chris Rowland on 01295 788655 or email: [forum@shipstononline.org](mailto:forum@shipstononline.org)

To request posts on the council's Facebook and Twitter feeds, contact Peter White (details above).

**Forum copy deadline:**
**First Wednesday of the month**

- but the sooner you can notify the editor of a potential story the better.

The Shipston Forum is produced monthly by the Town Council. It is currently not being delivered to households due to the suspension of the Midweek newspaper. Copies are available for collection from both Co-Ops, the Post Office, Taste of the Country, and Turners.

While every effort is made to ensure information is accurate, the Town Council and its contractors do not accept responsibility for material submitted by readers or third parties and does not endorse any organisation or event publicised. Contributions may be edited to fit available space.



**Saturday mornings  
10.00-12.00**

**St Edmund's Church, Church Street, Shipston**

**We are open to anyone.  
No referral or voucher needed.**

***In the past year we have helped  
over 100 households from Shipston  
and the surrounding villages.***

Donations of basic items can be left in the church porch  
during our opening hours.

There's also a collection point in both the Co-ops.

For information about our current needs  
please check on our Facebook page or our website:

 [www.facebook.com/ShipstonFoodBank](https://www.facebook.com/ShipstonFoodBank)



[www.shipstonfoodbank.org.uk](http://www.shipstonfoodbank.org.uk)