



Shipston Forum

shipstontowncouncil.org

November 2018

Could you be Shipston's next firefighter?

Extraordinary members of the Shipston community are being sought to be part of a first-class team of retained firefighters within the town.

Currently, there are seven retained firefighters in Shipston, responding to the call to keep our community safe. However, many more are needed to provide cover during the day, nights and weekends. This is an exciting and rewarding role, as local retained firefighter, Sam Begley can confirm. Sam joined the fire service two years ago. "Becoming a retained firefighter was a chance to fulfil a long-term ambition of mine. I was thrilled to make it through the assessment and thoroughly enjoy being part of a great team. As well as the operational duties, I've had the opportunity to learn new skills and meet a wide range of people. I love it."

Warwickshire Fire Service is looking to recruit people from all walks of life. No previous experience is needed, but common sense, self-motivation, compassion and the ability to work as

part of a team is essential. You must also live or work within five minutes travel time of Shipston Fire Station and be over 18. Retained firefighters are paid an annual retainer payment and an hourly wage when undertaking operational duties.

As well as responding to emergencies, retained firefighters get involved in community work, including educating children and adults on fire safety in the home and attending community events, including the annual Remembrance Parade.

Although not based in fire stations, retained firefighters usually live or work in their local community and carry a pager, so when they get the call, they are ready to respond to an emergency. The role can work alongside any current career in agreement with your employer or performed outside of your normal working hours. The job is challenging, but it is also one of the most rewarding careers available.

Mayor, Ian Cooper, said: "Shipston's fire



Shipston's retained fire fighters looking ready for action

station is extremely important, not just to our town but to the surrounding villages. Shipston's ability to answer an emergency call can make a significant difference to the amount of time it takes to respond to a fire. We are extremely fortunate to have such a committed group of local firefighters and I sincerely hope more people will consider putting themselves forward. As a retained firefighter, you will play a vital role in keeping our community safe."

To take your first steps to becoming a retained firefighter or to find out more, visit www.warwickshire.gov.uk/beextraordinary



Centenary ceremony remembers soldiers who lost their lives in WWI

A ceremony to remember Shipston's 36 WW1 fallen took place on Sunday 21st October at the Gyratory Garden. The event was to mark the 100th anniversary of the war's end, watched over by the Tommy statue.

The Mayor, Reverends Sarah Edmonds and Sarah Bourne joined Legion members, relations of the fallen men and the public to hear names of the men read out. The Exhortation to the Fallen was given, and the Last Post and Reveille sounded by Luke Barker from Shipston Town Band. Two minutes' silence was observed.

Legion Chairman Richard Adams highlighted the impact of the war on Shipston and stressed the pride the town continues to have for all who

served in the conflict. Never will those who died be forgotten.

Remembrance Sunday is on 11th November. See page 11 for details.



Mayor's column



I want to tell you a story: I was at a mayoral event in Coventry recently – a fabulous event, but more about that later. The Deputy Lord Mayor of Coventry came over and thanked us again for the great time they had had at our Wool Fair, saying she thought Shipston was a lovely town with a great sense of community – so much so that she decided to come to Shipston for her summer holidays. Everyone I spoke to that evening lit up on mention that I'm representing Shipston – a common occurrence at the events I attend.

These positive reactions are a testament to our strong community and reinforce how fortunate we are to live in such a lovely town. This reflects the efforts of all those whose hearts and souls are in Shipston. Be it our firefighters, our police, First Responders and health professionals – they go the extra mile for Shipston. I can add our Town and District Councillors, to this list, as well as the many volunteers in the town, all of whom are dedicated to making this a better place for everyone.

Now to return to the Coventry event. Through the Coventry Tapestry and Shakespeare recitals in the Guildhall, we learnt what an important role Coventry as a city, as well as wider Warwickshire, played as a royal seat in Tudor times, and how the city was the third most important in the country. We are very fortunate to be steeped in such formative history, much of which we can learn a great deal from. There is plenty to support all sorts of interests in the town, such as the history society and U3A. If you're not sure where to start, take a look at the events and clubs highlighted throughout the Forum and get involved – I encourage everyone to take part in Shipston's thriving community.

Ian Cooper

The future of healthcare in Shipston - an update

Two important initiatives are taking place simultaneously to help plan future healthcare in Shipston.

South Warwickshire Clinical Commissioning Group (CCG), which is responsible for buying health services for the local area, commissioned a report in the summer to look at options for a new site for a larger Shipston Medical Centre. With help from patient groups, criteria have been established to help assess the options. A meeting of various interested groups, including Shipston Town Council, will take place in November to consider the non-financial aspects of the different options. A separate piece of work is being done to look at affordability and best value for money.

Once the outputs of these two processes have been combined, a preferred option will be identified for the CCG to consider. If an agreement in principle is reached, more work will need to be done to complete a detailed assessment and agree the final specification for the new medical centre.

Alongside this work, South Warwickshire Foundation Trust (SWFT) ran a survey seeking input from patients, residents and community groups regarding the services they would like to see at an expanded Ellen Badger Hospital. The response was overwhelming, and work is now progressing to weigh up different options, taking into account their relative benefits, and whether they can be delivered safely and for the long term.

One of the options includes the possibility of locating a GP practice within the expanded hospital. Shipston Medical Centre and SWFT are working together to maintain links between the existing services and explore options for the emerging expansion plans.

Further updates are expected early in the New Year.



Local councils meet to share ideas

Shipston Town Councillors held a productive meeting with the other 'Main Rural Centres' (MRCs) in the Stratford district, including Stratford Town, Bidford, Alcester and Wellesbourne. The meeting was organised to explore opportunities to work together and share ideas.

Planning dominated the agenda and there were a number of learning points for Shipston. Most of the MRCs put more resources into planning matters than Shipston. Rather than relying on voluntary councillors, many pay for expert input from an external planning consultant to help them understand and respond to applications in a way that gives greatest chance of success.

The MRCs also discussed effective ways of working with their district and county councillors, including acting as a channel to planning officers to obtain pre application information, and encouraging them to be members of local planning committees, or facilitate meetings with highways. Some councils have procedures

in place to ensure actions put to district councillors are more directly tracked and followed up.

Some MRCs are keen to take on the management of green spaces in their towns, something which Shipston Town Council has done less of in recent years. The advantage is councils have more control over the maintenance of the sites if they manage them, although this does come with additional responsibilities and costs.

Mayor, Ian Cooper, said: "The first meeting of the Main Rural Centres was really productive. A lot of useful ideas were shared and we will be looking at how we can improve our approach to planning to make it less onerous for councillors and more productive for residents. Thankfully we have very positive relationships with our district and county councillors, but we will look at improving the recording of requests to make sure actions are followed up and dealt with."



News from Shipston Town Council's October meeting

Hot topics:

New road name: The Royal British Legion has proposed that the name of the new road off Tilemans Lane be called Armistice Close.

Road confusion: The Town Council has written to Cala Homes to chase installation of road name signs after the Community First Responders struggled to attend an address on the site as they couldn't find it.

Poor surface: Jackie Warner reported that the road surface at Berry Avenue is worsening which will be raised with Highways.

Housing issues: Jackie Warner attended an Orbit meeting at the Sheldon Bosley Hub. The Housing Association confirmed it was keen to meet with tenants to sort out any issues – housing tenants are encouraged to take Orbit up on this offer.

Donated display: Taylor Wimpey has donated a variety of bulbs to the town. Fay Ivens has liaised with Shipston In Bloom to agree where to plant them and is hoping Taylor Wimpey will do the planting.

Tourism training: Marianne Westwood confirmed that training has now taken place for volunteers willing to run the new Tourist Information Centre. The training was helpful and informative and the team hopes to be up and running in the next few weeks.

Poppy partnership: Marianne Westwood congratulated Shipston Scouts for working so well with the knitters who have been creating poppies for a display for Remembrance. The scouts helped knitters attach poppies to a giant net which will be displayed at St Edmund's Church.

Graffiti gripe: Peter White suggested that the council works with the Primary School to tackle unsightly graffiti on a bin just outside the school.

Portabello crossroads: Latest reports suggest work to install traffic lights could begin in November.

Yes and no for Horseshoe: Councillors voted to support The Horseshoe's proposed new fire escape. However, they have objected to a retrospective application for an illuminated sign. The Town Clerk will notify the Listed Buildings Officer to

request they review the removal of the traditional sign which has already been taken down.

Campaigning for Shipston:



Youth Club needs a new home: The Youth Club Management Committee is having to investigate possible alternative sites as the High School is likely to want to demolish the existing building in two years' time to make way for a new sports centre. The club is looking at whether the Children's Centre could be used but other venues may need to be considered.

Change of use: Councillors have objected to a proposed change of use for 46 Church Street as it is unclear how much effort has gone into marketing the property as a retail unit. The applicant will be invited to discuss with the council how their proposal complies with Core Strategy policies. These indicate a change of use of this kind can only be made if there isn't a realistic prospect of the property being able to continue in its current state.

South Lynn House appeal: The first planning application to convert South Lynn House into retirement apartments is going to appeal on 4th December in Stratford. The appeal takes place over several days, during which time the town council's planning group leads will be away. Councillors agreed to investigate hiring a planning consultant to review the appeal evidence and represent the town council at the hearing.

Town Council business:

Consultation response: Shipston Town Council will submit a response to the Local Industrial and Economic Development Strategy for Stratford-upon-Avon. The response will point officers in the direction of relevant sections of Shipston's Neighbourhood Plan.

Tree planting: The Town Council will plant five trees in Railway Crescent to replace dead trees that have had to be removed.

Tree caution: Councillors have requested a professional assessment on the status and safety of a tree on West Street following an application to remove it.

Shipston Educational Charity gives grants to students



Shipston Educational Charity has awarded grants for the 2018/19 academic year.

The charity received 18 applications – slightly fewer than previous years. Grants have been awarded totalling £1,400 which will help under 25 year olds in higher or further education, apprenticeships or technical qualifications fund their studies.

Neighbourhood Plan is formally adopted

Shipston's Neighbourhood Plan became the ninth Neighbourhood Plan in the district when Stratford District Council formally voted to adopt the plan on 15 October.

The plan is the culmination of six years' work, much of which has been done by volunteers.



Shipston's neighbourhood plan
Our town, our plan, our future.

Is Prince Harry coming to the 2018 Shipston Community Christmas Lunch?

Well you just never know, now that he and Meghan Markle are aware of the charity which was started back in 2016 by Danni Mooney, Hayley Ash and Tessa Hince. The charity provides a warm, homely environment on Christmas Day for those not expecting visitors on the day itself. Nobody should have to spend Christmas Day on their own if they would rather spend it celebrating with others.

The event is for all ages, and last year the age range of guests was 18 - 99! Some have lost loved ones or are parents who have alternate Christmases with their children, perhaps relationships are strained at home, or they find Christmas a challenging time of year. If you have any friends or family who might be alone and don't wish to be, then get in touch!

Donations for raffle and tombola prizes would be much appreciated. The team is also on the lookout for spare Christmas decorations.

Volunteers are needed to help in the run up to organise the event, and also to help on the day. Perhaps you might like to bring the family down later in the afternoon to help with the 'big clean up' to work off your Christmas dinner! Any support is always greatly appreciated.

For more information or to volunteer, email: Shipstoncommunitychristmas@hotmail.com or visit www.facebook.com/shipstoncommunitychristmas/



Shipston to take part in this year's Tapathon World Record Attempt

It's time to get those feet tapping....

Dancers in Shipston are getting set to join in the BBC Children in Need Tapathon 2018 in association with The Performers Project. The dancers will be attempting to break the world record for the most people dancing the same routine at the same time in multiple venues.

Tapathon events will be held in hundreds of different locations throughout the UK on Sunday 18th November, including Shipston's Townsend Hall. Children and adult tappers are welcome to join in the 'have a go' warm up routine at 12pm, before watching the Shipston dancers complete the official world record attempt at 1pm.

There will be a cake stall and refreshments from 12 until 2pm to help fuel all the activity and raise more funds for Children in Need. Everyone is welcome so please support if you can.



Don't miss this year's Victorian Evening

Can you believe it's nearly Christmas? One event that's sure to put you in the festive mood is the Rotary Victorian Evening on Friday 7th December.

Church bells and carols will herald the start of the evening, accompanied by Shipston Town Band. Then it's time for the grand switch on of the Tree of Life and Town Christmas Lights.

Father Christmas will hopefully make a dramatic entrance before heading to his grotto, accompanied by his elves.

The event will include traditional treats such as mulled wine and mince pies, a hog roast, and face painting. Over 40 charity and business stalls will be selling Christmas gifts, while Shipston Rotary will be giving you another chance to get your hands on a handmade 'Woodolf' which sold out fast last year.

A special new attraction is being introduced to delight the little ones: a children's carousel will be installed outside The Dogs' Trust in Market Place which is sure to prove popular.

Don't forget to put the date in your diary so you can enjoy the 21st Rotary Victorian Evening. For more details, see the advert on the back page.

South Warwickshire pupils take part in symbolic Cross of Nails service

Primary school pupils and clergy in south Warwickshire united to lead a symbolic Cross of Nails service of peace, forgiveness and hope for the future at St. Edmund's Church in October. A Cross of Nails dedication, prayers, song, reflection and Litany of Reconciliation were shared by School Council members from Newbold and Tredington, Brailes and Shipston Primary schools in this special service as part of Coventry Diocese Centenary Celebrations.



Reverends Sarah Edmonds, George Heighton and Sarah Bourne led and supported the children in the worship. During the service, the Cross of Nails was passed on to Brailes School. Pupils from both Shipston and Brailes Schools shared the carrying of the Cross of Nails back to Shipston Primary School, after which it continued its pilgrimage to Brailes School for Harvest Festival at St. George's Church.



The Cross of Nails began its journey from school to school in January 2018 in the ruins of Coventry Cathedral. The message of healing the wounds, forgiving the past, reconciliation, celebrating differences and working together for a better future is a message which is so important to all in our communities.

Scouts and Cubs get stuck into helping our environment

During September, Shipston Scouts and the two Cub Groups were litter picking and tidying up in and around our town. The cub scouts tidied the graveyard behind St Edmunds, clearing up the area, with another group clearing away litter from the hedgerows of the sports club on London Road.

Meanwhile the Scout group ran a litter survey from various places in and around the town, looking at what kinds of litter is being dropped / discarded and the possible damage it can cause to the wildlife in the area. The litter could have simply been blown from bins or dropped, but tends to end up in the hedgerows which causes the damage.

All the scout groups are very proud of the town and will do all they can, when they can, to keep it looking tidy and safe.

Cub scouts have also been looking into other ways of looking after local wildlife with a visit from Hedgehog Street – an organisation which recently featured on Countryfile and Central news. The cubs have designed posters to help make local residents more hedgehog aware. Continuing the animal theme, visits are planned to Redwings horse and pony centre and a wildfowl sanctuary.

All this work will go towards community and animal carer badges that the scouts will be awarded later in the term.



Shipston First Community Responders

received a £100 windfall from Shipston Allotment Holders. Philip Vial was delighted to accept the donation on behalf of First Responders which was presented by Allotment Holders' Representative, Maurice Trapp, following the group's first prize in the Moreton Show as reported in last month's Forum.



MONDAY**Citizens Advice:**

Mornings, New Clark House.
To book call 01789 200136

Shipston Duplicate

Bridge Club: 6.45pm for
7pm, Catholic Church Hall.
Penny Law 663871

Shipston Baby & Toddler

Group: Term time only. 9.30-
11am, Scout Hut. Contact
shipstontoddlers@gmail.com

Knitting & Crochet Club:

7-9pm at Low Furlong.
Contact Julie Pardoe 07956
180989 or Facebook 'Shipston
knitting and crochet group'.

TUESDAY**Yoga for all abilities:**

9.30am-11am Catholic Church
Hall. Contact Lee Figures
665995 / 07526 575969

Stroke Club: Fortnightly

10am-12pm The House of
Bread Retreat at The Mill,
Burmington

Rhyme time for under 2s:

10.45am Shipston Library. Free.

Age Concern Lunch Club

at Stour Court. Stella 686224

Silver Surfer Computer

Lessons, Shipston Library
2pm. Booking essential.
0300 5558171

Bingo: Alternate Tuesdays.

Doors open 6.30pm. Sheldon
Bosley Hub. 661886

Shipston on Stour

Rotarians: The White Bear,
7.30pm. Adrian Ramskill
07976 566525

Cantamus: 7.30-9.30pm,
Catholic Parish Hall. Richard
Emms 662163.

WEDNESDAY**Coffee at St Edmunds**

Church: 10.30am – 12pm.

U3A Chicago Bridge:

Social Bridge 2pm-4.30pm,
Catholic Church Hall, Roger
Smith on 238400.

Stour Valley Probus:

alternate Wednesdays at

10am, The George in Brailes.
Roger Smith on 01608 238400.

THURSDAY

Little Fishes: 9.45-11.15 am,
Townsend Hall. Baby and
toddler group run by Stour
Valley Baptist Church. £2 per
child. 50p siblings. (Term time)

Shipston Stitchers:

alternate Thursdays 10am
3pm Catholic Church. Contact
Kath Cheshire on 663486.

Active Memory Group: 3rd
Thursday, 10am - 12noon.
Contact Alyson Spence 01608
661703 or 07725 892087

Story Stomp: Shipston
Library, 10.45-11.15 am.
FREE For children aged 2-4.

Age Concern Lunch

Club: Alternate Thursdays.
Gill Roach on 01295 680309
or Pauline Carr on 01386
700703

Safer Neighbourhood

Team: Fortnightly. Public
surgery, 2.30pm to 3pm. New

Clark House.

The Thursday Club: 2pm-
4pm, Shipston Library. Free
weekly drop-in session for
adults. Board games, puzzles,
colouring, crafts. Tea/biscuits.

Exercise for the elderly:

£5. Alternate Thursdays,
2.30-4.30, Catholic Church
Hall. Contact: Ann Smith on
238400

Stour Singers - Choral

Society: 7.30 - 9.30pm
Primary School Hall. Yvonne
Ridley 01789 269587.

Shipston Badminton Club:

Townsend Hall, 7:30pm

Starting 6th September -**Yoga for all abilities:**

5.45-7pm. Catholic Church
Hall. Contact Lee Figures
665995 / 07526 575969

FRIDAY

Walks with a friendly group.
Old Mill car park at 10am.

Contact: Marlene, 663616

Shipston Probus: alternate
Fridays. Shipston Sports Club,

Contact Nick 01608 662928

Age Concern Lunch Club

at Stour Court. Call June on
684218

Knitting & Crochet Club:

2-5pm, Rainbow Fields.
Contact Julie Pardoe 07956
180989

Shipston Archers: Shipston

High School, indoors, 6pm
till 8pm. Beginners welcome.
Contact 07795 632718

Bingo Night at Rainbow

Fields: Doors open 6.30pm.
Contact Ruth Keyte 661382

SATURDAY

Chatterbooks: 10.30am –
12pm, Shipston Library. Free
monthly drop-in session.
Suitable for ages 6-11.
Typically second Saturday but
please enquire.

Shipston Archers: Sheldon
Bosley Hub, outside, 1pm
till dark, weather permitting.
Beginners welcome. Contact
07795 632718 or 664646

November Diary

1 Shipston Cancer Support Group: Drop-In
Centre: 15:00 to 18:00 Rainbow Fields. Drop
in any time during the afternoon/evening.

2-3 Lions Book Shop: Closing Down Sale: see
ad on page 7

**2 Shipston Sports Club: Bonfire and
Fireworks Extravaganza:** see ad on page 9

3 Shipston Town Council Monthly Litter Pick:
All welcome. Meet at New Clark House, West
Street at 10am. Contact: Fay Ivens 662133 or
fayivens@aol.com

7 Shipston Widows: Local lunch. 12pm.
Contact: Barbara Bean 663230

**Stratford Time Bank's Shipston Social
Meeting:** 1.30pm-3pm, Community Room at
Stour Court. Everyone welcome

Shipston-on-Stour Women's Institute: Ginny
Davis - From the Pillory to the Prison Cell.
AGM. 7pm, Catholic Church Hall, Darlingscote
Road. Contact: Jane Hanks 664519

Chronic Pain Support Group: 7.30 pm,
Rainbow Fields. Contact Marianne Westwood
01608 662223

8 Royal British Legion – Shipston Branch:
Committee Meeting. 7.30pm, New Clark
House, West Street. All members welcome.
Contact Alex Black 01608 664743

9 Rural Cinema - The Bookshop: see ad on
page 16

**10 Royal British Legion and Shipston Town
Band - Remembrance Concert:** see page 16

**Shipston Home Nursing: Designer and 2nd
Hand Clothes Sale:** See ad on page 8

Brailes Firework Spectacular: 5pm, Sports
Field, Brailes. Adults £5, children £3. Under 3s

free. No sparklers.

11 Remembrance Sunday Parade: Departs the
High Street at 10.30am sharp. See page 11

12 Stour Valley Visually Impaired Group: 'Zig
Zag to Zanzibar'. Mrs Jarvis. Contact: Shirley
Pilkington 662684

Shipston Town Council Monthly Meeting:
7pm, New Clark House. All welcome. Contact:
Georgina Beaumont 662180

**Stour Valley Lions Monthly Business
Meeting:** 7.30pm, The White Bear Function
Room, Shipston. Visitors welcome. Contact
Membership Officer Lion Paul Garfield on 07828
589564 or paulgarfield@icloud.com

**13 Senior Citizens Action Network (SCAN)
Meeting.** Townsend Hall, Sheep Street.
Refreshments from 10am. Talks begin at
10.30am. Meetings are free and open to
anyone 50+. Contact Marie Darwen 01789 260
108

14 Shipston and District Gardening Club: A
Touch of Sparkle. Flower designs by Dawn
Keitley, bringing your garden indoors this
Christmas. 7.30pm, Catholic Church Hall,
Contact Tony Mitchell, tel. 01608 666933

**16 Stour Valley Carers Group: Supporting
Dementia Carers** 10.30am-12pm, Ellen
Badger Hospital (using the Day Unit entrance).
Friendly welcome for all visitors. Contact:
Carol Ruthven 662706 or Lizzy Feather 686013
Singing Down Memory Lane: Reminiscence
Songs for people with memory problems. 2pm
-3.30pm at Stour Court Community Lounge,
Old Road. Contact:- Barbara Smith 01608
662433

Royal British Legion – Social: A social

gathering of serving and ex-service members
of HM Armed Forces at 1930 hrs in the White
Bear. If you miss the comradeship and friendly
banter of your service days, do come and
take part. Open to all members, and anyone
interested in joining the RBL. Contact Alex
Black 01608 664743

Shipston Music Society: Gerald Finzi and
Thomas Hardy by Tim Porter. see ad on page 7

21 Shipston Widows: Join us for a friendly and
informal get-together. 10.30am - 12pm, Coach
& Horses. For further information, contact
Barbara Bean on 663230

Diabetes testing: See ad on page 7

24 Scouts Race Night: see ad on page 8

25 Cantamus: Concert with a Cuppa: see ad on
page 9

26 Stour Valley Visually Impaired Group:
Musical Afternoon with Nic Nicholson. Contact:
Shirley Pilkington 662684

27 Multiple Sclerosis Society: 'Drop in' meeting.
10.30am at the White Bear Hotel. Contact: Ann
Bartlett 666161

Shipston Library Lego Club: 3:30-4:30pm.
Free for School Aged Children, to be
accompanied by an adult. Contact: Shipston
Library 663438

Shipston U3A: see ad on page 8

28 Shipston and District Literary Society:
Somerset Maugham: Man of Letters, by Robin
Taylor. 7.30pm, The White Bear. All welcome.
Contact Helen Marshall, 01789 740773

**30 All Churches Together Christmas Wreath
Making:** 7:30-9pm Catholic Church Centre.
Contact 07702425720 to book. Free (donations
welcome)

Can you spare a couple
of hours to help your
community?



Voluntary Action Stratford-upon-Avon District (VASA) is looking for volunteers who have a couple of spare hours to run a lunch club.

Could you help bring older people together for a monthly lunch in a local pub?

Please contact Sam at VASA for more details.
07766 007 413 sam@vasa.org.uk

NATIVITY

A play for all the family about the first Christmas

Friday December 14th 2018

at

Our Lady & St Michael Church
Darlingscote Rd, Shipston
6.30pm

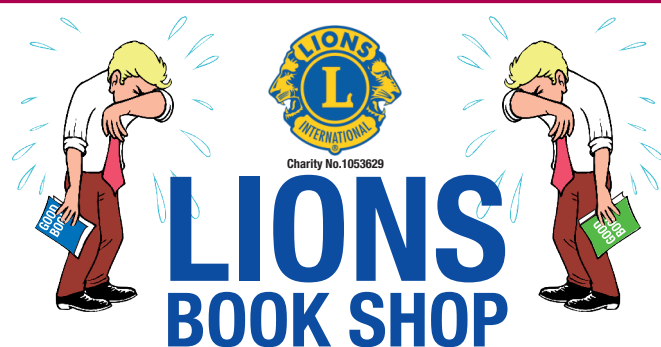


FREE ADMISSION

Places are limited

(first come first serve basis)

or Contact 07952820456 to reserve



LIONS BOOK SHOP

FINAL CLEARANCE

SALE

- Hardback **£1**
- Paperback **50p**
- Children's **20p**

ALL BOOKS
MUST GO!

Friday 2nd November & Saturday 3rd November 2018

The Scout Hut, New Street Car Park, New Street, Shipston on Stour

Friday:- 10.00 a.m - 4.00 p.m. & Saturday:- 10.00 a.m. - 2.00 p.m.

All proceeds to Lions Local Projects.

DIABETES

KILLS 1 PERSON EVERY 5 SECONDS
NO MATTER HOW OLD THEY ARE
COMPLICATIONS INCLUDE:



SIGHT
LOSS

HEART
ATTACK

LIVER/KIDNEY
DAMAGE

RECURRING THRUSH

AMPUTATION

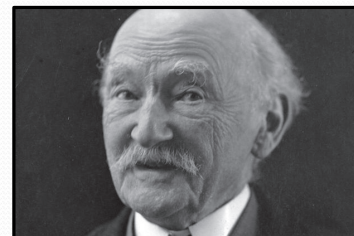
NERVE DAMAGE

ON 21st NOVEMBER 2018 2pm - 5pm
ELLEN BADGER HOSPITAL

TAKE THE TEST **NOT THE RISK**



Gerald Finzi & Thomas Hardy
Composer and poet
A talk by Tim Porter, historian & lecturer



The Methodist Church
New Street, Shipston on Stour
Friday 16th November 2018,
7.30pm

Guests £8.00 – Students £3.00
Accompanied Children free
New Members always welcome
More information: 01608 662514

Are you looking to get your Christmas started?
Come and join us for an evening's Entertainment...

Peter Le Breuilly, a talented local actor,
 presents a reading of Charles Dickens'

A Christmas Carol

Saturday 1st December 7:00pm
 at Parish Centre, St Michael's Catholic Church,
 Darlingscote Road, Shipston

 **Tickets @ £7.50**, entitle you to a
FREE glass of wine and a mince pie

Call 01608 662065 and book your ticket
 Maybe you'll be lucky on the raffle too! 

All proceeds from this event will be donated to:  **EKICA FUNDRAISING**
 Supporting the education and well-being of children and young people in Arusha, Tanzania

For more information on the work we do
 please email: ekicatrust@gmail.com



Scouts

RACE NIGHT
 SATURDAY 24TH NOVEMBER

DOORS OPEN 7 PM
 FIRST RACE 7.30 PM

TICKETS **£10** PER PERSON
 INCLUDES ROAST PORK SUPPER
 AND RACE CARD
 TOWNSEND HALL, SHIPSTON

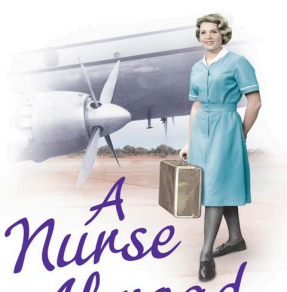
Tickets available from
 Turners of Shipston
 Contact Becky Taylor on 07988 913485
 or in the Sports Club Bar at the weekend

Raising Funds for the Stratford District Scouts participating in the World Scout Jamboree

SHIPSTON-ON-STOUR AREA U3A
 THE UNIVERSITY OF THE THIRD AGE

Learn, Laugh, Live

TUESDAY 27 NOVEMBER, 2018
2 pm TOWNSEND HALL,



A Nurse Abroad
 Adventures in nursing,
 from the Arctic to the Outback
ANNE WATTS

The author describes her work among the Inuit people in the frozen north of Canada and what it was like to be nurse and midwife in the Australian outback among a tough cattle-ranching community living in close proximity with Australia's Aboriginal people.

Visitors are welcome
Entry including refreshments £2



DESIGNER & 2ND HAND CLOTHES SALE
Saturday 10th November
 9.30am - 11.30am
 Free Entry
 Sheldon Bosley Hub
 Shipston on Stour CV36 4DQ

For more information please call Rebecca Mawle on 01608 674929
 or visit www.shipstohomenursing.co.uk

SHIPSTON HOME NURSING
 HOSPICE CARE AT HOME

SAVE THE DATE
SHIPSTON HOME NURSING
 INVITE YOU TO
A CHRISTMAS CONCERT

Friday 21st December
 7pm, St Edmunds Church, Shipston-on-Stour, CV36 4AP
 Tickets £15 per person includes glass of wine & canapés

For tickets please contact Rebecca Mawle on 01608 674929 or email
rebecca.mawle@shipstohomenursing.co.uk
www.shipstohomenursing.co.uk

SHIPSTON HOME NURSING
 HOSPICE CARE AT HOME



SHIPSTON SPORTS CLUB
LONDON ROAD CV36 4EP

FIREWORKS EXTRAVAGANZA
2nd NOVEMBER 2018

BONFIRE - 7.00pm
FIREWORKS - 7.30pm
GATES OPEN - 6.00pm

FAIRGROUND RIDES
REFRESHMENTS
LICENSED BAR

Adults: £6.00
Children: £3.00


NO SPARKLERS

SHIPSTON'S A CAPPELLA CHOIR

Cantamus

presents

CONCERT WITH A CUPPA



Witty, wistful, funny, heart-felt and uplifting music and words for a Sunday afternoon, with home-made cake & cuppa

Sunday 25 November, 2.30pm
Townsend Hall, Shipston on Stour CV36 4AE

Entrance £10 inc refreshments
Tickets from A Clarke Electrical and at the door
www.cantamus.org.uk



Christmas Handmade Market

From 12-3pm at the
Shipston Townsend Hall on
Sunday 2nd December 2018.

With over 30+ Table Top Stalls,
Mrs D's Vintage Teas will be also be
joining us, so please come along too.
Everyone Welcome!

Christmas is coming.....

so come and make some preparations at

Holiday at Home

on
December 3rd
in the
Townsend Hall
10am-3pm




Activities, games, quizzes & entertainment
for the over 65s.

Costs £8 for the day,
including lunch & refreshments.
To reserve your place contact
Rosemary 01608 662584
Jude 01608 663779




An event organised by Christians Together in Shipston

Shipston Primary School

Shipston On Stour Primary School



Brush Up!

Carrie Preston from Shipston Dental Practice visited Shipston Primary for the whole day to speak to all fourteen classes about oral health, organised by the charity Brush Up UK (www.brushupuk.com).

Following her oral health presentations, Carrie emailed the school to say how lovely our children are! She thought they really engaged with her presentation and were very polite and helpful when asked. "They are a credit to your school."

Carrie hopes the children and teachers enjoyed the presentation - there has been a lovely positive response locally.

Mischief Makers

Well done to all the children who completed the Mischief Makers Reading Challenge run by the local libraries over the summer holidays. The Beano theme was a big hit. Children had to read at least six books and collect stickers from the library in order to be awarded a certificate and medal, of which they are very proud. Once again, there was a super response from Shipston pupils, including our youngest children in Reception.



Democracy in Action

Speeches have been written, practised and given. Votes have been made and counted. The Year 6 children have applied for the senior positions and been allocated accordingly. So, we can now

proudly present our new School Council. This year is set to be a busy and exciting one, requiring support and gathering ideas from all of the children in our school. The school councillors are very enthusiastic and are looking forward to representing their classes at our regular meetings.

Harvest Festival

There wasn't even standing room remaining as over 500 staff, parents, carers and children filled St. Edmund's Church for our annual Harvest Festival. Our Calypso recorder group opened the celebrations. Mr. Roberts and Reverend Sarah Bourne welcomed the congregation with an opening prayer and after a hymn the majority of the service was lead by our Year 6 Flamingos class who read poems, bible readings and prayers. Many thanks to all our families for such generosity with the dried and tinned goods donated to our local Food Bank.



The school also presented Revd. Sarah Bourne with a book and flowers to say thank you for all that she does for our school, before she goes on sabbatical.

Shipston High School By Gavin Saunders, Headteacher

Shipston High School has had an active term, with students involved in some fascinating projects. Year 9 students had the opportunity to visit Compton Verney art gallery to view the collection and participate in a creative workshop. It is always great to get students learning in different environments, and this was a good opportunity to enjoy a wonderful local location. The Art department has also been fortunate to welcome into school several visiting artists to work with students, and we will share more on this in the future.

As we approach a significant remembrance Sunday, the school is involved in a number of activities to commemorate this important event. Miss McElroy has written a summary of a recent trip to the National Memorial Arboretum, which follows here:

On Thursday 4th October we were able to take Year 9 on a visit to the National Memorial Arboretum. This trip was designed to help the students reflect on how and why we remember the fallen by looking at a small section of the 300 war memorials.

During our visit we took part in a poppies workshop, this enabled us to learn about the creation of the poppies and about some of the poetry inspired by them. Students were asked to take apart their poppy and then put it back together with restrictions such as using one arm or closing their eyes. This helped to demonstrate how difficult it is for veterans returning from war to adapt to their surroundings; a real insight into the impact of conflict.

We were then able to freely walk the grounds of the arboretum. We focused on two memorials: the armed forces memorial which commemorates soldiers killed in conflict since the end

of World War Two and the Shot at Dawn memorial which commemorates those soldiers who faced the firing squad for perceived offences. These were both powerful memorials that provoked a deep level of discussion from the students.



As a close to our day we took part in the act of remembrance where students read poetry and laid a wreath on behalf of the school. The students' response to the trip was profound with many reflecting on why we are free today and what it actually means to be free. The scale of the memorial at the Arboretum also provoked some awe from the students, leaving them with a deep level of respect.



Rotary Tree of Life



Each December the Tree of Life stands proudly in the centre of Shipston, its white lights glowing symbols of love and hope in memory of loved ones who are no longer with us.

If you wish a friend or relative to be remembered in this way you are invited to sponsor a light by returning the form and making a donation knowing that every name will be entered into the Book of Remembrance. All contributions will be donated to The Time Out Group South Warwickshire which provides activities for children with disabilities.

The illumination of the **Rotary Tree of Life** will take place at the opening of the Rotary Victorian Evening on **Friday 7th December at 6pm**

Rotary Club of Shipston-on-Stour Tree of Life

Please find enclosed donation £..... (minimum £5) cheques payable to Rotary Club of Shipston on Stour

In Memory of: (Name) _____

From: (Name) _____

Your address: _____

Forms are also available in local shops, banks, library, post office and other locations or contact Avryl

Please return to: Rotarian Avryl Thompson, Willow Bank, Pillerton Priors, Warwickshire CV35 0PS. Tel 01789 740 047

Shipston Rotary



There's a high chance a member of Rotary can expect to be confronted by someone who has collapsed and who is unconscious, or worse, at some time. Will they know what to do?

Waiting for paramedics and doing nothing will, in most cases, be catastrophic for the patient. A First Aid expert from Cotswold First Aiders, based in Bourton-on-the-Water, recently spent an evening telling Rotarians exactly how to cope. With the help of a dummy patient and a defibrillator kit, Phil explained exactly what to do: how to move the person into the recovery position easily, how to prevent choking, how to pump blood round the body until paramedics arrive and how and when to use a defibrillator. The 'defib' pads must go on a bare chest ensuring everyone, especially gawpers, stand well away.

The 'defib' doesn't start the heart, it stops it. It enables the heart, hopefully, to return to a proper rhythm.

Many readers may have attended first aid lectures years ago. Methods have improved. Experts like Cotswold First Aiders can give everyone enough knowledge to keep a dangerously ill person alive, without panicking, till the professionals arrive.

Preparing for Remembrance

Remembrance Sunday is on 11th November – which is also Armistice Day. The Shipston Branch of the Royal British Legion will be joined by representatives from local councils, emergency services, Shipston High School and local youth and community groups in the annual Remembrance Parade.

Participants and spectators are invited to assemble in the High Street ahead of the march to St Edmund's which will begin at 1030 sharp, accompanied by the Town Band. All serving and ex service personnel are welcome to parade. Medals are worn.

Wreaths will be laid at the War Memorial prior to the start of the Service of Remembrance, to which all are welcome. The Parade marches back to the High Street afterwards.

To mark the centenary of the ending of WW1, the church bells will be muffled and rung in the morning prior to the parade before the Remembrance Service in Church. At 12.30pm the muffles will be removed and the bells will ring out loud, timed to coincide with the bells of Westminster Abbey and St Paul's Cathedral in London which will be broadcast to the nation.

The Poppy Appeal continues until 11th November so if you haven't bought your poppy yet, look out for sellers who will be in the High Street as well as selling door to door.

Don't forget, the Legion is holding a concert to mark the centenary of the end of WW1 on Saturday 10th November. See the ad on page 16.

For details on all the above contact Branch Chairman Richard Adams on 01608 662328/07861452182 or richardadams5@hotmail.com.

THE ROYAL BRITISH
LEGION



St Edmund's

To celebrate Coventry Diocese centenary St Edmund's has been given a bird box for the churchyard, suitable for wrens and robins. The nest box has been provided by Welcome to the Future, a community/environmental charity, based in Pershore, Worcestershire, who secured funding from The Michael Marsh Charitable Trust to pay for bird nesting boxes for community groups, environmental groups and churches and we are very grateful to them.

The churchyard is now closed until April 2019 after a very well-used summer.

A Concert With a Cuppa

Cantamus, Shipston's chamber choir directed by Richard Emms, is presenting an afternoon of music, readings, and home-made cakes to warm a winter's afternoon. The concert will start at 2.30pm in the Townsend Hall, Shipston-on-Stour, on Sunday 25th November. The audience will be treated to witty, wistful, heartfelt and uplifting music, with matching readings. If you enjoy Beatles' songs, folk-songs, sacred music, or scurrilous satire, there is definitely something for you to enjoy in the programme.

Entrance costs £10, including the refreshments, and there is no charge to accompanied children. Tickets are available from A. Clarke Electrical, from Cantamus members, and at the door.

Currently Cantamus has vacancies for 2 basses. If you are a confident musician, happy to sing music across the centuries, sacred and secular, contemporary and traditional, Richard would be very pleased to hear from you, on 01608 662163. The choir rehearses on Tuesday evenings in Shipston.

Shipston Music Society

Shipston Music Society's September meeting was an evening of music performed by CHIMERA – a quartet of flute (Clare Preston), bass (Anese Cullington), drums (Robin Payne) and piano (Helen Porter).

The programme consisted of classical pieces by Debussy (d.1918) and Faure (d.1924) and works for flute and jazz trio by Claude Bolling and Jacques Loussier (both present day composers). There were several movements from Bolling's Suites Nos. 1 and 2 providing contrast in style and instrumentation with two solos by Debussy. The first "Dr. Gradus" for piano from his Children's Corner Suite played with real style and very nimble finger work by Helen. Then later we heard "Syrinx" for unaccompanied flute. Clare's beautiful tone and fantastic breath control were evident throughout.

Shipston Proms

It feels like only yesterday we were planning for the 20th anniversary year and now here we are in the White Bear again, looking forward to the 2019 Shipston Proms and its 21st year. So far, there have been some preliminary talks about bands and a reshuffling of the committee which now sees Charlotte Wright, who was deputy chair last year, taking over from Kim Perry. Kim has done a tremendous job over the last two years organising the festival and is now taking a well-earned break.

Marilyn Chambers who did a fantastic job of the raffle has also left and both members will be missed.

Committee Members are as follows:

Chair	- Charlotte Wright
Deputy Chair	- Hayden Ward
Secretary	- Nicola Porter
Treasurer	- Peter White
Press Secretary	- Susan Perry
Social Media	- Charlotte Wright & Nicola Porter
Minute Secretary	- Jeanne Robinson
Friends of the Proms	- Jill Davies

New members are always welcome, and it is a great opportunity to get involved in a community project especially if you have an interest in music. The Proms committee usually meets every third Wednesday at The White Bear at 7.30pm. If you would like to join the Committee or help out as a volunteer, please contact us either through Facebook or email: shipstonproms@gmail.com.

If there are any businesses who are interested in sponsoring the Proms, please visit our website www.shipstonproms.org for more information. Or, if you would like to join the popular Friends of the Proms scheme please take a look on the website too.

We do hope you will be able to join us in some way.

"Play Bach – Prelude No. 1" provided us with a clear contrast between an opening section in true Baroque Bach style followed by a jazz interpretation – quite fascinating.

The evening ended with three more movements from Bolling. "Pastorale", gentle and lyrical, then "Affectueuse" in which Clare played her alto flute. Members were delighted by the deeper tone quality of this instrument and afterwards she was very happy to chat to them and answer their questions. The third piece, "Veloce" as the name suggests was a fast and very rhythmic piece which had everyone tapping their feet. This was a fitting finale for the quartet: their ensemble playing was excellent throughout and their genuine pleasure in performing together delighted the audience. We hope that they will perform for us again in the future.

It's all go at Shipston Home Nursing!

The fundraising team at Shipston Home Nursing certainly know how to keep busy - there's a lot of events coming up over the next few weeks.



In addition to the second hand designer clothing sales and the Christmas concert advertised on page 8, there are more opportunities to support the charity in the run up to Christmas. For the fashion-hungry, there's another designer clothing sale on the 1st and 2nd November in Darlingscott, and a fashion show at The Bell, Alderminster on 8th November in association with Domino.

Quiz fans can show off their general knowledge skills at the Inter Charity Quiz in Long Compton on 10th November. The Christmas Fair takes place on the 13th and 14th November at Ettington Community Centre - an ideal opportunity to stock up on festive gifts. For more information about SHN events and how you can raise money for the charity, visit www.shipstonhomenursing.co.uk

Townsend Hall 150 Club Draw



The following are the winners of the October draw:-
 Member 47 - £15 Member 67 - £10
 Member 86 - £5

Congratulations to all the prize winners

Events just beyond the doorstep

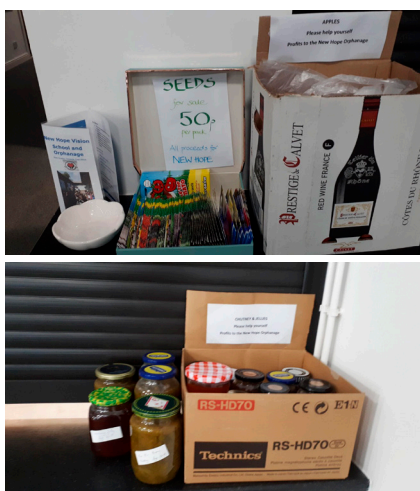
A monthly Farmer's Market is now well established at Cherington, Stourton and Sutton Village Hall. The Market is on the first Thursday of every month (except January) from 6pm until 8pm. Most produce is local and includes bread, cheese, veg, meat, cakes as well as Curry Sauces, Greek food and olive oil. A hot supper and drinks are available to purchase, making it a social occasion. The villages are also holding a Christmas Craft Market on Friday 9th November from 6pm until 8pm in the hall.

The Armscote Christmas Tree Festival takes place at St David's Church, Armscote on 1st December from 10.30am-5pm and 2nd Dec from 10.30am-4pm. Featuring tea/coffee, soup, mince pies, produce stall. Free admission. Concludes with Candlelit Christingle Service at 4pm.

Ekica Fundraising (New Hope)

Ekica Fundraising (New Hope) would like to thank all the parishioners and local people who use the Parish Centre on Darlingscote Road for their donations, which have been given for apples, packets of seeds and home made jams and chutneys over the last few weeks. We have raised a fabulous £108 towards building classrooms at the school we support in Tanzania. You are all amazing!

If you'd like to continue supporting the charity, they will be holding an event in the Parish Centre on Saturday 1st December at 7pm. A professional reading of Dickens' A Christmas Carol by Peter Le Breuilly, a local thespian. Come and enjoy a free glass of wine and a mince pie and let the Christmas season truly get underway. Tickets are £7.50, available by calling Sue or Tadge on 01608 662065. All are very welcome.



Macmillan Coffee Mornings – a tasty way to raise money

A coffee morning to raise funds for Macmillan was held on Friday 28th September at Horsefair. Supported by friends and neighbours, the event raised an impressive £165 for the charity. Well done everyone.

Shipston Cancer Support Group decided to tap into residents' competitive spirit for their Macmillan coffee morning, with a bake-off hosted by The Falcon Inn and judged by Deputy Mayor, Dan Scobie.

A representative from the group shared the anxious bake-off experience on Facebook: "We were literally wringing our hands as judge Dan Scobie sampled our bakes."

The winner, scoring 9/10 with her fruit layered chocolate cake, was Carol Fellows-Blick.

The event was a tremendous success, raising £221 for Macmillan Cancer Support. Thank you to everyone who came along.



Reduce your chances of becoming a victim of burglary with help from Warwickshire Police

Warwickshire Police has published advice on how to protect your home and garden and reduce your risk of being burgled.

According to the police, most victims of burglary are concerned that they have been specifically targeted or watched for a period of time, to determine what their movements are. However, most burglaries are opportunistic.

Burglars tend to choose houses that:

- have little or no obvious security
- appear unoccupied
- have easy, unobserved access to the side and rear
- provide them with the chance to gain entry without being seen or heard

It is possible to dramatically reduce risk of burglaries by taking simple security measures to deter burglars and remove some of the opportunities that present themselves as easy targets.

The best way to approach your home security is to start from the boundaries and work your way into the centre, treating each area as a layer, until you reach the targeted contents. Although the layers differ for each household, generally they include:

- Boundaries
- Outbuildings
- Buildings
- Contents

Warwickshire Police has produced a guide with top tips on protecting every 'layer'. These include:

- Aim for a minimum height of 1.8 metres for side and rear fences or walls. Diamond-shaped trellis at the top makes access more difficult. Gates should be securely locked.
- Lock outbuildings using secure fixings and consider covering shed or garage windows with mesh grilles.
- Make sure all your doors and windows are locked when you leave your house. Consider installing an intruder alarm.
- When you're away use timer switches to turn lights and a radio on at certain times to give the impression someone is at home.
- Mark your belongings visibly and permanently - including garden tools and bicycles - and take photographs of valuables.

To read more tips on home security, visit www.warwickshire.police.uk/Home-security



District Council News

It's all about planning and housing this month.

SDC is in a great position to use new legislation to borrow to build - so that we can bring on new housing stock for rent / sale via our Housing Company. These are exciting times to be a local councillor - we are taking up more responsibility for our local areas, with the towns and parishes. As a believer in localism - I say bring it on - let us loosen the ties to Whitehall and do what our area needs.

The Planning Enquiry into the development at South Lynn House is now scheduled for December. I am opposed to the scheme as are many people in the town. The Enquiry is an opportunity to raise our concerns and a reminder that the Council and the local community can work together to "place make" to have the facilities and development WE want and need. I'll be there.

I am also keen to explore the potential for attracting inward investment and business to Shipston and the local area to stimulate our own local economy. So if you are thinking of starting a business or moving here please talk to me about opportunities and how SDC and I can help.

Of course, one of the things we really need is to keep our young people and families in Shipston. I am working on our Cabinet at SDC to promote new and needed development here. Watch this space.

Finally, though - I have to report that my two positions do sometimes come into conflict with each other. As a District Councillor I am having stern words with myself as a County Councillor.....read on in my WCC report.

Jo Barker, District Councillor – Shipston South Ward

Chris Saint & Jo Barker will take it in turns to provide the content for this column.



County Council update

If we are going to improve our quality of life further and our general wellbeing, then we do need to get our creaking infrastructure sorted. I was asked by a world expert on such things whether I thought we had enough electricity, water and sewage facilities. I can only respond practically - I know that water pressure and gas pressure can be very variable, the sewage works sometimes smells as though it is taking the strain (of the drains) so I conclude that we need to address this. In planning terms we perhaps ought to be asking for grey water recycling, solar panels, heat pumps and anaerobic digesters on new builds - so I am lobbying the Department of Health, Communities and Local Government on this. For me it's a no-brainer as the cost is minimised on new builds and contributes to reducing carbon emissions. Now I have argued with myself - please come back to me with your thoughts.

On other matters - progress is slow on what next with the Childrens' Centre - but we are getting there. Don't forget that there are many services still available at Badger Valley.

Transport issues are still rumbling (slowly) but I would commend the Shipston Link and Ubus services to you. The more they are used the better. I am also working on a car share scheme - as my contribution - I am happy to offer lifts to Stratford when I go - but its regular commuters I would love to hear from - if you can give someone a lift to work. We are working on a more robust future arrangement!

If you have noticed increased lorries through Shipston - you are not imagining it. I am investigating why WCC has made the A3400 a preferred route - in my opinion, it seems madness to do so.

Thank you to all those who come to my surgery at the George on Thursday mornings. Apart from trying to help, I love meeting you all and hearing some truly amazing life stories. If you need a specific time (or another day/time) then please phone me on 07748968712. To those I owe a call / email - I have been rather swamped recently. I always prioritise people whose health or home is at risk but please do chase if you're waiting to hear from me.

County Councillor, Jo Barker



Shipston Medical Centre

Medical Centre – t: 01608 661845

Vaccinations against Seasonal Flu

We continue to offer vaccination against flu to everyone who is eligible (over 65s, pregnant women, 2 & 3 year olds and those with long term conditions, such as diabetes, heart disease and chronic obstructive pulmonary disease (COPD) and people whose immune systems are suppressed.

Last year there were significantly more cases of flu nationally than either of the previous two winters, with over 9000 hospital admissions relating to flu. There is a temptation to think that flu is just a bad cold, and for some fit and healthy people that might be how it feels. However, for many it is massively

debilitating, and can make people feel too unwell to get out of bed for at least a week. Where there are complications of flu pneumonia can develop, which is a life threatening condition.

We appreciate that we have not had vaccine available as early in the year as previously. However, we now have sufficient stocks to vaccinate everyone eligible who wants vaccination. Flu generally does not start to circulate until week 50 (the week before Christmas) so there is still plenty of time to have your vaccination and to be better protected against flu this year. Please call reception to book an appointment.

It's that time of year...

Infections, such as colds, coughs, sore throats and earache

are very common at this time of year. The vast majority are caused by viruses which cannot be treated by antibiotics, but fortunately clear up on their own. Simple measures, such as drinking plenty of fluids can help. Usually ear infections last up to four days, sore throats for 1 week, colds for 1½ weeks, and sinusitis and coughs up to 3 weeks. If infections last longer than this, or occur in a child less than two years old, elderly people or those with other medical problems, you should think about seeing your doctor.



Shipston Medical Centre

Your Town Councillors


Ian Cooper, Mayor
Finance Group Chair

t: 01608 663785

e: ian.cooper@shipstontowncouncil.org


Dan Scobie, Deputy Mayor

t: 07771 772511

e: dan.scobie@shipstontowncouncil.org


Ronnie Murphy
Planning Group Chair

t: 01608 664518

e: c/o clerk@shipstononline.org


Alison Henderson

t: 01608 661911

e: ali.henderson@shipstontowncouncil.org


Brian Cooper

t: 01608 663237

e: brian.cooper@shipstontowncouncil.org


Martin Ferrier

t: 07814 092134

e: martin.ferrier@shipstontowncouncil.org


Brian Healey

t: 07773 337134

e: brian.healey@shipstontowncouncil.org


Fay Ivens
General Purposes Group Chair

t: 01608 662133

e: c/o clerk@shipstononline.org


Paul Rathkey

t: 01608 664141

e: paul.rathkey@shipstontowncouncil.org


Sheelagh Saunders
Heritage & Leisure Projects Group Chair

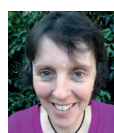
t: 01608 662190/07800 889947

e: sheelagh.saunders@shipstontowncouncil.org


Jackie Warner

t: 07717 391234

e: jackie.warner@shipstontowncouncil.org


Marianne Westwood

t: 01608 662223

e: marianne.westwood@shipstontowncouncil.org


Peter White
Communications Group Chair

t: 07792 507168

e: peter.white@shipstontowncouncil.org

Useful Contacts

Community Links Transport	01789 264491
Shipston Library:	0300 5558171
- 24/7 renewal line	01926 499273
Highways customer services	01926 412515
Severn Trent Emergency Line:	0800 7834444
Shipston Volunteer Transport Scheme	01608 663122
Shipston Leisure Centre	01608 662354
Shipston Medical Centre	01608 661845
- Out of hours	111
Shipston Post Office	01608 661465
Shipston Forum	01608 495955
Shipston Recycling Centre	01926 412593
Stratford District Council	01789 267575
Townsend Hall	07514 704057
Warwickshire County Council	01926 410410
UCHW Hospital	024 7696 4000
Warwick Hospital	01926 495321
Local police (non emergency)	101
Shipston Police Safer Neighbourhood Team:	01789 444670
	shipston.snt@warwickshire.police.uk
Churches of Shipston:	
Stour Valley Baptist	01608 664876
Our Lady & St Michael	01608 685259
St Edmund's	01608 661210
Methodist Church	01608 642256

Shipston-on-Stour Town Council

New Clark House, West Street, Shipston-on-Stour, CV36 4HD

Georgina Beaumont, Town Clerk

t: 01608 662180 e: clerk@shipstononline.org

County Council Contact:
Jo Barker

t: 07748968712 e: jobarker@warwickshire.gov.uk

District Council Contacts:
Jo Barker (Shipston South)

t: 07748968712

e: jo.barker@stratford-dc.gov.uk

Chris Saint (Shipston North)

t: 01608 664048

e: chris.saint@stratford-dc.gov.uk



Something exciting to share?

If you have a story that's relevant to Shipston residents, please contact the editor, Catherine Martin, on 01608 495955 or email: forum@shipstononline.org

To request posts on the council's Facebook and Twitter feeds, contact Peter White or Dan Scobie (details above)

Forum copy deadline:
First Wednesday of the month

- but the sooner you can notify the editor of a potential story the better.

Copies are available to read at the Library, New Clark House and the Medical Centre.

The Shipston Forum is produced monthly by the Town Council to support the community and is distributed to all households. If you don't receive a copy, please contact the Town Clerk. The Forum can also be downloaded from www.shipstononline.org

While every effort is made to ensure information is accurate, the Town Council and its contractors do not accept responsibility for material submitted by readers or third parties and does not endorse any organisation or event publicised. Contributions may be edited to fit available space.

League of Friends of Shipston-on-Stour Hospitals

CHRISTMAS CARDS

Supporting the Ellen Badger Development Fund

Pack of 5 Cards

£2.50

2 Packs

£4.50

Cards available from

E H SPENCER

9 Market Place

Or Fay 01608 661274 or Narelle 01608 662193

Charity No 503010

THE ROYAL BRITISH
LEGION

Shipston on Stour Branch

The Royal British Legion

*Presents***A Concert***By Shipston Town Band**To commemorate***The End of World War I****Saturday 10th November 2018****Commencing 7.30pm in the Townsend Hall****STOUR VALLEY LIONS PG**

England 1959. In a small East Anglian town, Florence Green decides, against polite but ruthless local opposition, to open a bookshop.

**SHIPSTON HIGH SCHOOL,
FRIDAY 9th November 2018 at 7.00pm****Advance Tickets £3.50 or £4 on the door.****From: A. Clarke Electrical, 27 High Street, Shipston On Stour.****Lion Judith Jackson. Tel: 01608 661148****Interval for refreshments, drinks and snacks.****Shipston Rotary****2018 Victorian Evening****December 7th****from 6pm to 8pm****Music, Stalls, Food,
Father Christmas, &
Tree of Life**