



# Shipston Forum

shipstontowncouncil.org

September 2023

## Town shows support for beds at Ellen Badger



Hundreds of people from the town and the surrounding district marched through the streets of Shipston last month in protest against plans to rebuild the town's community hospital without inpatient beds. The BBC reported that 'despite heavy rainfall, about 700 people turned out for the demonstration on 5th August, with many dressed as badgers in honour of the Ellen Badger hospital which served the community from 1896 until 2022.'



## Shipston Museum is open!

Nearly 400 years ago Royalist Civil War soldiers marched through our Shipston streets. On Saturday 5th August a troop from Lord Hopton's Regiment of Foot reenacted that event for another historic moment: the launch of the Shipston Museum. In the Town Square, the Town Crier's bell rang to mark the official opening with the soldiers marching to the West Street Museum's home in Old Clark House for the ceremony.

The crowds followed the soldiers to the front door where trustee Martin Russell thanked the Regiment and drummer Alice Free, while Trustee President Bekky Hillman introduced the Museum.

Dick Burge, who has long been associated with the Museum, performed the opening ceremony, reminding us of the Museum's long journey, starting with the Shipston on Stour and District Local History Society. At one point it was in the old School Room and then Sheep Street before moving to the home of his fellow curator Mike Ashley. It was Mike's dream to have a proper base for the growing collection. To him the finds and donations from local people were not just artefacts, but the story of Shipston and its surroundings.

Sadly Mike died before the dream could be fully realised, but it is still 'in the family' as daughters Rebecca Ashley and Justine Taylor are trustees. Dick recognised Mike's immense contribution before cutting the ribbon and announcing that the Museum was now well and truly open!

Nearly 100 visitors accepted the invitation to see the displays which included the story of the region from when

giant mammoths were wandering in the ice tundra through to Roman times, the medieval town market and the now defunct Shipston railway. Most found it difficult to choose their favourite items among the many fascinating articles. For one man it was the Quaker bench which he admired as a carpenter, for another the maps had always been of interest. And for one little girl it was the handling room, where she was able to pick up Roman tiles and medieval dishes.

The Museum will be open on Saturdays and Sundays 1-4pm until the autumn. There's an opportunity not just to visit but also become more involved – either by supporting the Museum as a Friend or becoming a volunteer, either front-of-house to greet visitors, to help with administration, cataloguing or follow up research. To find out more please contact: [shipstonmuseum@outlook.com](mailto:shipstonmuseum@outlook.com)





Mayor’s column



Hello Shipston,

Travelling through villages all over the country I often wonder why is this village in this location? There are many reasons, such as markets, breweries and mills.

So why is Shipston where it is? Scepwæstune (one of the many spellings) as it was known, meaning sheep wash town, was first settled probably before the Romans arrived and is where it is because of its location at a junction between two trackways: one from Stratford to Oxford and another between Banbury and Evesham. It is because of these that it became a market town. It developed into the town it is now over many centuries. All these details can now be found at the new museum at Clark House on West Street.

I had the privilege of attending the pre-opening evening and presenting a cheque for £2,500 to the trust from an anonymous donor, I wish the museum all the best for the future. As residents of Shipston, I would encourage everyone to make the effort to visit the museum.

Shipston was recently gifted land adjacent to the Chapel View housing development on London Road. This land has been named Cornmill Meadows and will soon be open for public access. The area is to be rewilded with appropriate British wildflowers for all to enjoy. Students from the High School have already been doing projects on the existing flora and fauna. Hopefully it will be an area for all to enjoy as the intention is to have disabled access.

Keep enjoying any fine weather we have. By the time this is published we will probably have seen all the seasons in the month.

Cllr. Gerry Kelly,

**Mayor, Shipston Town Council**

News from Shipston Town Council’s August Meeting



### Ellen Badger Hospital

South Warwickshire NHS Trust is preparing a business case on the bed review. Around 6-700 people turned out recently in support of retaining beds at the new building, with representatives from across the district and surrounding villages. Council agreed to raise concerns about the bed review and ask the Integrated Care Board to organise a consultation. If this is not satisfactory, there could be a referral to the Secretary of State.

### Museum

Councillors offered congratulations to the Shipston-on-Stour and District Local History Society on the successful opening of the Shipston Town Museum on 5th August.

### Angelas Meadow

Councillors met with Orbit for discussion on use of combined open space and provision of play equipment in Angelas Meadow.

### Linfoot gate

Councillors examined the gate between Linfoot Homes development and Chapel View after concerns expressed that it is at the wrong level or in the wrong place.

### Cornmill Meadows trees

A representative from the Heart of England Forest is advising on what trees to plant and when to plant them at Cornmill Meadows. They also examined a tree on Hawthorn Way that a resident had expressed concern about and deemed it not to be a problem.

Signage for Cornmill Meadows will be ready to install in September or October.

### Environment and flooding

Councillors agreed to rename the combined flood and environment group to Shipston Town Council Environment and Flood Action Working Group.

### Shaping Travel in Shipston

A further session will be held in September. Councillors agreed that businesses needed to be more closely involved in discussions, especially if ideas like a one way system in the town centre are to be considered.


### Pathways

Councillors discussed a possible future path for cycles and pedestrians, linking the Taylor Wimpey Herdwick Fold development with the Hub, providing an alternative route to the schools via Pittway Avenue. This will be taken to the Finance Working Group for the next stage of discussions.

### Staffing

The Deputy Clerk is leaving to pursue a career in teaching. The position will be left vacant and a second admin officer will be recruited.

General purposes working group



Lawns2Mow has been asked to investigate damaged play equipment at Queens Avenue and make sure it cannot be used in a dangerous condition. An external survey of the chapel has been requested to check for hazards and some internal work will take place before the interior survey is conducted. A further tree survey will be carried out by Treotech.

### District Council update

Several hundred people voted with their feet and badger masks on 5th August. Will their voices be heard for a genuine community hospital? Dave is speaking at the next Cabinet meeting of the DC where the public consultation is being discussed, so assuming the Cabinet agree, that will be both the District and County Council demanding the voices of Shipston be heard.

It was the long-awaited bed review that confirmed the provision of hospital beds have been removed from South Warwickshire. Dave has sent a Freedom of Information request to the ICB (Integrated Care Board) to see the reasoning behind this, but it has been refused. Dave is planning to appeal their decision.

I’ve been co-ordinating a Citizen Science project down the Stour, the aim being to test the river water weekly from multiple sites to monitor the pollution. Not only will this data be an important tool in campaigning for cleaner rivers, but we will be able to notify residents if the water is not safe, and possibly demonstrate over time the capacity of our sewage system in the face of future planning applications.

We have been asked to feed back to the District about all our dealings with the Housing Associations in our wards. There is a Task and Finish group collating all incidents good and bad, so if you haven’t already sent us details of your experiences, please do send us an email with all the relevant details.

**Olivia Hatch**

**District Councillor, Shipston North**

**077525 62114**

**olivia.hatch@stratford-dc.gov.uk**

County Council update



Jo Barker, County Councillor for Shipston, has not been able to write her usual regular column this month as she was on sick leave during August. We wish her well and look forward to her resuming duties.

In the meantime she can be contacted on:

**07748 968712**

**jobarker@warwickshire.gov.uk**

### Shipston Town Council Community Grant Awards

Shipston Town Council is inviting grant applications for the 2024/2025 financial year.

Grants are made to support a wide range of community initiatives across the town, delivered by voluntary groups and charities.

The scheme is open to any voluntary group or charity based in Shipston, or those who actively work in the town.

Applications must be made for specific projects, for example, the purchase of equipment or to support a planned event. Grants typically range from £250 - £2,000.

Larger sums may be awarded for certain causes.

**The closing date for applications is 31st October 2023.**

Application packs are available from:

The Town Clerk

New Clark House, West Street, Shipston on Stour, Warwickshire, CV36 4EN

clerk@shipstononline.org

01608 662180



## Shipston Home Nursing

Shipston Home Nursing is delighted to have joined forces with the Stour Health and Wellbeing Partnership as the Shipston Community Warm Hub. The hub opens every Thursday from 10am-12 noon at The Scout Hut in Shipston (CV36 4EW). Representatives from Shipston Home Nursing will be there on the last Thursday of every month. We hope people will pop along for a cuppa and a chat, particularly if they would like to understand more about the work we do in the community.



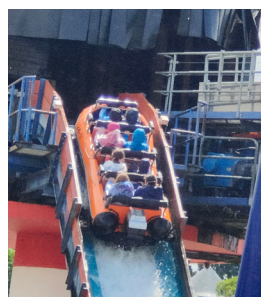
## Shipston Girlguiding

Shipston Brownies and Rainbows had two great trips to finish up for the summer. Firstly, Brownies, Guides and Leaders went on a Midlands region-organised Drayton Manor trip. This was a great opportunity for girls to visit a theme park, go on rides they had never been on before and find out what they liked. The weather was very kind and a great day was had by all who went. Rainbows and their Leaders also went to All Things Wild in Honeybourne where they were able to hold an aardvark, walk through lemurs, dig for fossils, ride the dinosaur train and see many animals. A fun-filled day enjoyed by all.

As part of the Cups of Kindness Badge, Brownies/Guides have created positive stones and rainbow-decorated CDs which you may have spotted, found around Shipston and hopefully taken away to enjoy.

We don't meet during the summer holidays, although one of our leaders went to Megamix, a Guides Festival, to help on the service team.

These events wouldn't happen without the help of adult volunteers and we wouldn't be able to do all we do within Girlguiding without them. If you would like to help us continue to do what we do and offer girls wonderful experiences and opportunities, we'd love to welcome you onboard. Please contact Diane at 07975674799 / [diane.wildish@gmail.com](mailto:diane.wildish@gmail.com)



## Come and sing with Stour Singers!

Stour Singers are looking forward to returning to rehearsals in September after our summer break. We'll be preparing for our winter concert programme of Vaughan Williams' Fantasia on Christmas Carols and Five Mystical Songs, plus Mozart's Ave Verum Corpus. We'll also be singing a selection of both well- and lesser-known Christmas carols.



Stour Singers is a friendly community choir and has been a fixture in Shipston since 1975. We are always keen to welcome new members; perhaps you'd like to give us a try! The health and wellbeing benefits of singing in choirs are well known, and our members would certainly concur with the research:

*"Whatever the problems of daily life, an evening singing with the choir frees the mind and lifts the spirits – an absolute tonic."*

*"I joined Stour Singers last year and found it welcoming and friendly. A great place to escape from the stresses of everyday life."*

*"Singing with Stour Singers is a wonderful experience. Everyone is so friendly, and we are all keen to work towards a high standard of music-making. It is a great atmosphere."*

*"I love the camaraderie of being in a choir, and when it culminates in singing with the orchestra for a concert performance, that is the icing on the cake!"*

*"It is a real thrill to sing choral works with a professional orchestra and soloists."*

*"What I like about singing with the choir is being able to make music with other people. I don't play an instrument - I wasn't given the opportunity as a child - but I can use my voice!"*

*"Stour Singers has given me new friendships and a deeper knowledge and appreciation of classical music."*

The ability to read music is not essential, and we do not ask our members to audition. Rehearsals take place at Shipston Primary School on Thursdays from 7.30-9.30pm, with a short break halfway through the evening. There's plenty of parking for those not within walking distance, and we always start and finish on time. Our first rehearsal is on Thursday 7th September, and we welcome anyone wanting to try us out throughout September, so don't worry if you miss the first rehearsal. If you'd like to know more about singing with us then just drop us a line at [stoursingers@gmail.com](mailto:stoursingers@gmail.com) or call/WhatsApp our coordinator Gayle on 07791 769102.

We have also organised a choral workshop on Saturday 21st October, led by professional singer and teacher Janet Shell. The aim is to improve physical techniques such as posture, breath control and projection, and the mental and emotional approach to music, such as marrying together music and text and conveying meaning in singing. The techniques learnt in the first part of the workshop will then be applied to three well-known choral pieces. We extend a warm invitation to any singers who would like to join us for this exciting day; you don't have to be a member of the choir.

The workshop takes place at Brailes Village Hall, Castle Hill Lane, Brailes, OX15 5AS and will run from 11am-4pm. The cost for the day is £15 per person. *Tea and coffee will be provided but we ask that you bring your own packed lunch.* For further information or to sign up please email our producer Hilary on [haroesen@hotmail.com](mailto:haroesen@hotmail.com).



Registered Charity No: 1146459 (England)  
[www.shipstonmusic.org.uk](http://www.shipstonmusic.org.uk)

**Young Musicians Concert**  
**Friday 15 September, 7.30pm**  
**Methodist Church, 52 New St,**  
**Shipston-on-Stour CV36 4EN**

**Tickets £8**

*On the door or available from Clarke Electricals, Shipston*

*Free entry to Shipston Music Society members*

*Information: ph 01608 662514*

*New members always welcome*

Supported By



Singing

## Down Memory Lane

Come along and join in with the singing for people with memory issues and their carers



**2.00 - 3.30pm**

Rainbow Fields, The Driftway,  
Shipston on Stour CV36 4BU

Refreshments provided  
(We may be able to help with transport, please ask)

Contact: Fay Ivens 01608 662133

Alternative Contact: Pat Hutton 01608 664648

Wednesday, 18 January	Wednesday, 15 February	Wednesday, 15 March
Wednesday, 19 April	Wednesday, 17 May	Wednesday, 21 June
Wednesday, 19 July	Wednesday, 16 August	Wednesday, 20 September



SHIPSTON ON STOUR - A DEMENTIA FRIENDLY COMMUNITY



## Are you over 65?

Do you need advice and/or signposting for services?

Are you feeling isolated and want to know how to get involved with groups?

Perhaps you have questions about care options?

Or maybe you would like a quick Blood Pressure check?

**Nurses Jan and Liz** together with our **Social Prescriber Jacqui**, who work as part of the Older People's team at Shipston Medical centre, have re-started their

## DROP IN CLINIC

**WHERE:** Scout hut, Shipston-On-Stour

**WHEN:** EVERY THIRD THURSDAY morning between 10am and 12noon

*No appointment necessary*



## Regular Events

### Monday

**Seated Exercise Class:**  
10am Rainbow Fields and 11am Townsend Hall

**IT Help!:**  
10am-12pm Shipston Library (appointment only)

**Shipston Duplicate Bridge Club:**  
6:50pm for a 7pm start.  
The Church Room, Darlingscote Road,  
Contact Matthew Hunter: 01608 684499

**Shipston Knitting and Crochet Group** - Monday evenings  
7-9pm in the Townsend Hall.

### Tuesday

**Rhyme Time:** 10.30am, Shipston Library

**Dementia Café:** Shipston Lodge, 10.30am-12pm

**Lego Club:** Shipston Library, 3.30pm

**Strictly Fitsteps Fab:** 10am, Townsend Hall

**Age Concern Lunch Club:** Stour Court 12pm. Contact Jill  
Case 01608 662226

### Wednesday

**Seated Tai Chi:**  
9.30am, Townsend Hall. Free Admission

**Standing Tai Chi:**  
10.30am, Townsend Hall. Free Admission

**Indoor Curling:** 2pm, Townsend Hall

### Thursday

**Shipston Community Warm Hub:**  
Every Thursday 10am-12pm, The Scout Hut, New Street.

**Story stomp:** 10am, Shipston Library

**Scrabble Club:** 2pm-4pm, Shipston Library

**Age Concern Lunch Club:** Rainbow Fields 12pm. Contact  
Christine Grant 07939 595600

### Friday

**Pilates for Complete Beginners:**  
9.30am Townsend Hall

**Walks with a friendly group:**  
10am Mill car park. Call Marleen 01608 663616

**Shipston Stitches:**  
Every fortnight at The Church Room, Darlingscote Road.  
Contact Anita Spencer on 01993 832665

**Board Games Social Afternoon:**  
Fortnightly 1:30pm-4pm Rainbow Fields

**Age Concern Lunch Club:** Fortnightly, Rainbow Fields,  
12pm. Contact Amanda Holden 01608 686268  
Saturday

**Shipston Knitting and Crochet Group** - Friday afternoons in  
Mrs. Browns from 2-4.30pm

### Saturday

**Lego Club:** Shipston Library. From 10am.

**Shipston Food Bank:**  
10:30am-12pm, St Edmund's Church, Shipston.  
No Referral or voucher needed

## What's On Calendar : September 2023

**2nd. Shipston Town Council Monthly Litter Pick:** All welcome. Meet at  
New Clarke House, West Street at 10am. Equipment and refreshments.

**5th. Shipston Library Reading Group:** 2pm-3pm first Tuesday of each  
month.

**6th. Shipston Widows:** Local lunch. 12pm. Contact: Barbara Bean 663230

**6th. Shipston on Stour WI:** Peter Cowley – First Woman Racing Driver.  
Catholic Church Hall, Darlingscote Road at 7pm. Contact Jane Hanks,  
Secretary on 01608 664519

**8th. Stour Valley Lions Cinema:** What's Love got to do with it? See ad on page  
10

**11th. Shipston Town Council Meeting:** 7pm, New Clark House.

**12th. Senior Citizens Action Network (SCAN):** See ad on page 5

**12th Shipston Food Festival** See ad on page 16

**12th. Shipston Flower Club presents Highland Glory** – a demonstration by  
Jane Fox. Doors open 7pm for a 7.30pm start at Shipston Primary School,  
Station Road, CV36 4BT. Visitor entry £6. There will also be a raffle of  
demonstrated arrangements. Meetings take place on the 2nd Tuesday each  
month

**13th. Shipston and District Gardening Club:** Alpines in the Wild and  
Cultivation by Diane Clement. 7.30pm, Catholic Church Hall, Darlingscote  
Road. Contact Tony Mitchell 01608 666933

**14th. The Royal British Legion – Shipston Branch:** Committee Meeting,  
location TBC. If you would like to know more, become a Committee member  
or a member of the Branch call or message the Branch Secretary Alex Black  
on 07789 968733 or email alblack32@hotmail.com

**15th. Shipston Home Nursing:** Golf Day. See ad on page 10

**15th. Royal British Legion Social Evening - Shipston Branch:** Third Friday  
of each month We meet in the White Bear Inn from 7.30 pm onwards. Come  
and join us and share your stories with like-minded people. Contact Alex Black  
07789 968733 or alblack32@hotmail.com

**15th. Shipston Music Society:** Young Musicians Concert. See ad on page 5

**20th. Shipston Widows:** Join us for a friendly and informal get-together.  
10.30am - 12pm, The White Bear. For further information, contact Barbara  
Bean on 663230

**20th. Singing Down Memory Lane:** 2pm-3.30pm, Rainbow Fields, The  
Driftway, Shipston. Refreshments provided. We may be able to help with  
transport. Contact Fay Ivens on 01608 662133. See ad on page 5

**21st. Drop-In Clinic:** Scout Hut, Shipston. See ad on page 5

**26th. GLOSS (Great Ladies of Shipston and Surroundings):** A social group  
for women to have fun and make friends. 7.30pm-9.30pm Catholic Church  
Hall, Darlingscote Road, CV36 4DR. Meeting on the 4th Tuesday of every  
month (except December). All ladies welcome. Entry £2.00

**26th. Shipston U3A:** See ad on page 7

**27th. Shipston and District Literary Society:** The Nature of Genius – H.  
Beverley Tasker. Meetings are held at The Halford Bridge Inn, Halford, at  
7.30pm. Visitors welcome £5 ea. For further information ring Helen Marshall  
07582 903212

**28th. Local Quaker Meeting for Worship:** St Edmund's Church, last  
Thursday in the month at 2.30pm, followed by tea/coffee, biscuits & chat

**29th. Townsend Hall:** It's Trad Dad! See ad on page 10

## SHIPSTON ON STOUR AREA

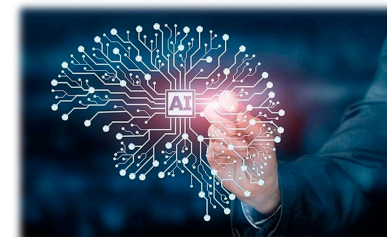
**u3a**

Registered Charity No 1170969

## TUESDAY 26 SEPTEMBER 2 pm TOWNSEND HALL

### ALTERNATIVE REALITIES - THE FUTURE IMPACT OF ARTIFICIAL INTELLIGENCE ON SOCIETY

#### A TALK BY JOHN HANDBY



There is growing concern about managing AI technology and its use. It promises many benefits in the field of health and social care, assistance in running our lives and the elimination of routine activities. But how concerned should we be about the arrival of chatbots and drone warfare? John Handby has spent his career working in advanced technology and will address the pressing issues we face as a society in exploiting this technology.

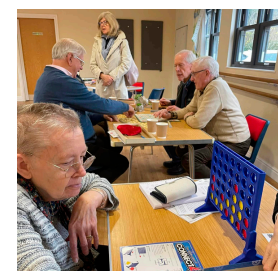
Visitors are welcome  
Entry including refreshments £2

## SHIPSTON COMMUNITY WARM HUB

Every Thursday, 10.00 am - 12.00 noon  
The Scout Hut, New Street, Shipston CV36 4EW



- Come along, meet new people & have a good chat
- Relax with free refreshments, board games, books & wifi
- Weekly activities for all ages
- Plus energy saving tips & advice



### Everyone's welcome!

This free community event is run by  
Stour Health and Wellbeing Partnership



With funding from  
**Warwickshire**  
County Council



The Warm Hubs community  
project in Warwickshire  
and Solihull is supported by



Your Gas Network



## Welcome to Shipston Music Society

Do you enjoy live music?

Would you like to try one of our concerts held on the  
third Friday of the month?



Our 2023/24 season starts on Friday 15th September 7.30pm at the Methodist Church,  
New Street, Shipston with a Young Musicians concert featuring local young talent!

Tickets are £8 each, available on the door. If you decide to join the Society, this amount will be deducted  
from your subscription.

The Annual subscription is just £40, excellent value for seven concerts and  
one talk held during our coming season. Madeleine Kirby (harp), Charles  
Matthews (piano), Catriona Bourne (flute), musicians from the Birmingham  
Conservatoire, and the Blockley Blokes choir, are just some of those we will  
be welcoming to Shipston.

The Methodist Church is a small but excellent venue with good acoustics,  
providing a friendly, informal atmosphere.

We hope to see you there!

Supported By



Registered Charity No: 1146459 (England)  
For further information: ph 01608 662514 / www.shipstonmusic.org.uk

## BOARD GAMES SOCIAL AFTERNOON

**FREE ADMISSION**

**Fridays at 1:30pm to 4pm**

14 July, 28 July, 11 August, 25 August, 8 September and 22 September  
RAINBOW FIELDS, SHIPSTON ON STOUR



A social, fun get together with playing cards and board games, Fridays fortnightly.

For more information or to book a place please contact Vanessa Compton on  
01608 663320 or e-mail admin@shwp.org.uk

This is one of the range of FREE activities in the Dr Sue Pritchard Memorial Challenge delivered by the Stour Health and Wellbeing  
Partnership in conjunction with Sport England and L&Q. For more information on other activities please visit: www.shwp.org.uk





## Tallest sunflower competition

Well done to everyone who entered Shipston on Stour Rotary Club's competition this year.

We hope you enjoyed looking after your sunflowers - watering them, watching them grow, and managing to keep them upright during the strong winds we have experienced this summer!

### Winner of the 11 years and under class...

☀️ **Emmie Bramble** ☀️

Emmie's sunflower measured an incredible 10ft 4.5 inches.



### Winner of the 11 years and over class...

☀️ **Henry Bramble** ☀️

Henry's sunflower measured an amazing 8ft 5.5 inches.



### Runner-up of the 11 years and under class...

☀️ **Millie Yates** ☀️

Millie's sunflower measured an amazing 9ft 9 inches (exactly the same height as her entry last year!)



### Winner of the over-16s class

☀️ **Teresa Brookes** ☀️

Teresa's sunflower measured an impressive 7ft 7 inches.



## Emotional return to Tanzania

Sue and Tadge Sabatowski, founders of Ekica Fundraising, a charity supporting the growth and development of a pre and primary school in Tanzania, have just returned from spending five weeks in the country they call their second home.

Unable to visit since 2019, they returned to see the fruits of their fundraising labour and the generosity of supporters in Shipston and surrounding villages. Two blocks of three classrooms have been built and are now in full daily use. They funded the purchase of a minibus for use as a school bus at the close of last year, so were very happy to see this being used for collection and delivery of children from the outer reaches of the community. Sue said, "It has been particularly useful during the rainy seasons when walking several miles to school can be difficult and older children especially can drop out of school." They have also funded six desk top computers for the children's IT learning.

The school is situated in Ngaramtoni, about 20 minutes from the city of Arusha, the gateway to the Serengeti. It is an extremely poor region and the poverty is nothing like you would see in a developed country. The day Sue and Tadge spent taking food – sugar, maize flour, rice and cooking oil – to the homes of some of the poorest was especially difficult, emotionally. Tadge emphasised "In Tanzania, there is no welfare support or foodbanks. If you can't afford to eat, then you starve. It is literally that simple."

The main aim of their visit was to help the school's director make connections locally to try and obtain financial support to help the school develop some financial independence and sustainability. The local Rotary group were supportive and helpful as was Peter, a Tanzanian and the owner of Savanna



Expeditions, a safari operator. He will provide his guests on their 'free day' the opportunity to have a cultural visit to the school. This is something that many tourists like to do and is often a highlight of their trip.

Sue and Tadge would like to say a huge "thank you" to the people in Shipston and around who provided knitted,



crocheted and other children's clothes for them to take and distribute, as well as the toothpaste, crayons and money for buying essential food for the poorest families. To those who donated money for essential work, like fixing the water pipe and providing a fire extinguisher they are especially grateful too.

If anyone is interested, in September there will be a social and fundraising event, with a presentation to share the founder's recent visit to the school with supporters and anyone interested in the charity's work. Please call 01608 662065 for further information.



For further information about Ekica Fundraising, visit their website: [www.ekicafundraising.org](http://www.ekicafundraising.org) or call 07845 206566. They are also on Facebook and Instagram.

\* If you would like to help them raise funds, why not think about joining their 200 club – you could win one of 3 prizes up to £50 every month!

\* Thinking about booking a safari in the wonderful Serengeti? Contact the charity and they can put you in touch with Savanna Expeditions. You'll get to visit the school too!

## Bramble bash

A group of volunteers got together over the summer to clear a path through the footpath off the Hanson track which had become impassable. Armed with loppers, shears, hedge-cutters and an array of other tools the path was cleared from Hanson track to where it meets the Campden Road. Many thanks to all who took part.





**STOUR VALLEY LIONS CINEMA**



**What's Love Got to Do With It?**

An award-winning film-maker documents her best friend's journey into an assisted marriage in line with his family's Pakistani heritage. In the process, she challenges her own attitude towards relationships.  
Certificate 12A

**TOWNSEND HALL**  
**FRIDAY 8th September, 2023 at 7.30pm**  
Advance Tickets £5.00 or pay on the door.  
From: A. Clarke Electrical, 27 High Street, Shipston On Stour.  
**Covid restrictions – please hand sanitise on arrival.**

Drinks and raffle.

# scan

## SENIOR CITIZENS ACTION NETWORK

SHIPSTON ON STOUR and surrounding communities

**Tuesday 12<sup>th</sup> September 2023**

Townsend Hall, 52 Sheep Street,  
Shipston on Stour, CV36 4AE

10.00am for free refreshments / 10.30am start

**Avoiding scams & community safety**

**Ian King, Design Out Crime Officer**

**Please DO NOT attend if you feel unwell**

Please advise us if you no longer wish to receive the SCAN notice by calling John Wilde on 01789 260933 or email [john.wilde@stratford-dc.gov.uk](mailto:john.wilde@stratford-dc.gov.uk)

If you require transport to attend the SCAN meeting, VASA may be able to help with a door to door volunteer car. Mileage costs payable. Tel: 01789 262889 or Email: [transport@vasa.org.uk](mailto:transport@vasa.org.uk)



**GOLF DAY AT FELDON VALLEY**

**FRIDAY SEPTEMBER 15TH 2023**  
Feldon Valley Golf Club, Brailes, OX15 5BB  
8am - 3pm

Get together a team of four in support of Shipston Home Nursing. The day includes:

- Coffee & bacon rolls on arrival
- 18 hole 'Texas Scramble' at 9am
- On-course refreshments
- On-course and off-course prizes
- Two-course lunch & presentations

Find out more



Feldon Valley Members: £40 per person  
Non-members: £65 per person

Please contact SHN Fundraising on 01608 664850 or email [fundraising@shipstonhomenursing.co.uk](mailto:fundraising@shipstonhomenursing.co.uk) to register your team

Registered Charity No 1162586

**TH** Townsend Hall  
Charity No. 522997

52 Sheep Street, Shipston-on-Stour, Warwickshire. CV36 4AE  
[www.townsendhall.co.uk](http://www.townsendhall.co.uk)

**Ian Bateman Presents...**

**"IT'S TRAD DAD!"**

THE MUSIC OF  
ACKER BILK  
CHRIS BARBER  
TERRY LIGHTFOOT  
KENNY BALL  
AND MORE!

Ian Bateman - Trombone  
Ben Cummings - Trumpet  
Trevor Whiting - Clarinet  
Martin Litton - Piano  
Tom 'Spats' Langham - Banjo / Guitar  
Tom Clarke-Hill - Bass  
Richard Pite - Drums

**Friday 29<sup>th</sup> September 2023**  
**Doors Open 19:00 for 20:00**  
**Fully Licensed Bar**

**Tickets £12.50 from:**

- Clarke Electrical Services, 01608-661394, or
- For online booking, visit [ticketsource.co.uk/townsend-hall](https://ticketsource.co.uk/townsend-hall), or
- Email / Phone David: [ds@pinnegards.com](mailto:ds@pinnegards.com); 07511-694733

## Shipston Primary School

Shipston On Stour Primary School

### Year 6

I am very proud of our Year 6 children for their achievements this year. Their SATS results for reading, writing, GPS (grammar, punctuation and spelling) and mathematics were significantly above the national average: a testament to the quality of teaching throughout the school and the determination and character of our learners.



With a trip to the West Midlands Safari Park and a camp out, the children spent their final few weeks making memories. In the Year 6 Leavers' Assembly, the children's speeches told of fun times, proud achievements, strong friendships and a sense of belonging.

Whilst we are very proud of the amazing results of our Year 6 children, we are not surprised, as they reflect the excellent work, attitudes and success that we see throughout our whole school, every day, throughout every year.

### Surf's up for reception

In Reception, the Chicks and Ducklings read the book Clean Up and learnt about plastic pollution in the oceans. The children thought of ways to reduce, reuse and recycle. In the book they go surfing. The classes watched videos of Taro Watanabe, an American pro surfer. The children wrote questions for Taro which were sent to him by Mrs. Clarke. Mrs Clarke's cousin interviewed him and sent the children the video. All the children in Chicks and Ducklings were very excited to get the video reply and thought of more questions for him to answer. They couldn't believe that he falls off the surfboard every day and thought he was lucky that he could surf every single day. Interestingly, Taro's middle name is actually Kelly Slater - he had to become a surfer with that middle name!

### Matilda the Musical

At the end of term Year 6 pupils played to a packed house for dress rehearsals to the school and two evenings to families with their incredible musical performance of Matilda! It was wonderful to see all Year 6 children having a role in the play, which they have worked extremely hard on post-SATs, with regard to their acting, singing and dancing. The performances had incredible pace with non-stop action for well over an hour. Many thanks to all the teachers and teaching assistants in producing the play, to Rebecca Mackay for the brilliant costumes and props and to Mrs Campbell for the amazing direction and choreography.



### Starting school in September 2023

We are very much looking forward to meeting our new cohort of Reception children who start in September 2023. We still have a few spaces available for Chicks and Ducklings classes so please get in touch with Warwickshire Admissions <https://www.warwickshire.gov.uk/admissions> to apply for a place. Alternatively you can contact the school on 01608 661266.

We are full in most year groups but have a few places available in some year groups. Please contact the school if you would like to have a tour.

### Calling all golfers!

It's time to take the golf clubs out again... the Shipston Home Nursing Golf Day is back, on Friday 15th September at Feldon Valley Golf Club in Brailes. It's a great event for golfing enthusiasts with coffee and bacon rolls on arrival followed by an 18 hole 'Texas Scramble' at 9am. There will also be on course refreshments, a two-course lunch, presentations, prizes and an auction. Ticket prices remain the same as last year at £65 per head (or £40 per head for Feldon Valley members).

For local businesses interested in supporting the event, there are several sponsorship opportunities available. Please email [fundraising@shipstonhomenursing.co.uk](mailto:fundraising@shipstonhomenursing.co.uk). Donations to the auction or raffle would also be gratefully appreciated. For more information, please visit [www.shipstonhomenursing.co.uk/events](http://www.shipstonhomenursing.co.uk/events)

### Shipston Proms

It's been great to hear all the feedback from those who attended the Shipston Proms. It helps shape our programme for 2024. If anyone would like to join us, please come along: our first meeting will be at the George on 20th September at 7.30pm. We are planning Christmas concert to raise more money. Look out for updates.

### Happy birthday Peter

The former conductor of Shipston Town Band Peter Stevens celebrated his 86th birthday in August and was joined by Dave Birch and Dave Clemons with whom he worked closely during his successful period in the 1970s and early 1980s where he shared the conducting duties with Richard Nash. Amongst Peter's conducting successes was First place at the Leamington Spa Open Contest where he conducted Divertimento and third place at National Brass Band Championships Winter Contest at Wembley where we were placed third out of 18 bands playing Philip Sparke's Prizewinners. The visit saw a lot of reminiscing and discovering a few interesting memories and photos long forgotten.



The photo was taken by Peter's son Jonathan who was up for the occasion and was himself a former member of the band playing both cornet and percussion.





## Townsend Hall



The AGM was held in July and David Squires, the Chair of the trustees, reported on a challenging but nonetheless rewarding year to 31st March 2023 and extended a big thank-you to all the residents and organisations who have used the hall and its ever-improving facilities. He also noted that all the trustees are volunteers, and that the hall is managed as a charity. The many improvements made in the year include: new doors to the ramp area; new kitchen heater unit; storage space extension; new lighting in the main hall; sensor lighting in key areas; and a CCTV system.

Funding is an ongoing challenge: hall bookings cover the day-to-day, but extra funds are always required for big maintenance items and facilities improvement. Initiatives including the Trad Jazz evenings have raised £4,600 in the year and one of our trustees worked closely with Tesco to help raise funds for the stage lift. There are a number of projects such as the stage mobility lift that David wants to see through as he steps down as Chair whilst remaining a trustee. A big thank you to David for his dedication and fund-raising, and welcome to Jenny Glover as the incoming Chair.

### Trad Dad back in the swing!

The Trad Jazz programme will be kicking off again on Friday 29th September when Ian Bateman presents “It’s Trad Dad!”. A stunning line-up of musicians covering the music of Acker Bilk, Chris Barber, Terry Lightfoot, Kenny Ball, and many more! Tickets £12.50, available from [www.ticketsource.co.uk/townsend-hall](http://www.ticketsource.co.uk/townsend-hall), where you can bag your own table, or for general seating from Clarke Electrical Services in town. If you’re keen – and why wouldn’t you be – more fabulous Trad Jazz events have been booked for October and November – tickets now available.

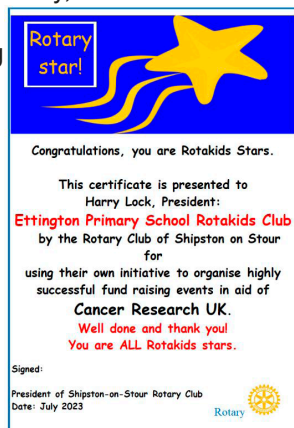
See our website, [www.townsendhall.co.uk](http://www.townsendhall.co.uk) and follow us on Facebook and Twitter.

## Shipston Rotary

Ettington Primary School was keen to reactivate their Rotakids club, the junior version of Rotary, for the first time since Covid. Mr Higgitt, the year 6 teacher was the driving force, saying it gives the children a real purpose between the finish of SATS and the end of their time at Ettington.

Over two days the new Rotakids nominated a charity to raise funds for and put their plans into action, including Splat the Teacher (only water!), name the giant Teddy, splat the rat and a wig-wearing day. The whole team were involved and raised over £300 for their chosen charity, Cancer Research UK.

Rotarian Nigel Willis presented a special Rotakids Star certificate to President Harry Lock at the end of year assembly, saying “This has been one of the best ever Rotakids groups; great ideas and boundless enthusiasm.”



## Astronomical Society

The Stratford upon Avon Astronomical Society meet every 1st and 3rd Tuesdays at 8pm (doors open at 7.30pm) at Alderminster Village Hall. Everyone is welcome, especially beginners and those wanting to learn more. The first Tuesday is a Club Night. The speaker on 19th September is Sam Jackson from the Open University, with a talk called ‘Planetary Defence: from large observatories to your own backyard.’

Please join us on our Club Nights. There is no charge initially to come along and find out more, but if you do want to become a member then the fee is JUST £15 A YEAR, free if you are in full time education. For more details: [www.astro.org.uk](http://www.astro.org.uk) or contact the Chairman [john.waller@astro.org.uk](mailto:john.waller@astro.org.uk) or on 07703 192188.

Each month one of our members offers pointers to what to look for in the sky during the coming weeks. This month’s Observation Notes are by Adrian Wakeham and Dave Benton.

### Autumn skies

As the nights lengthen, we get chance to look at late summer and Autumnal asterisms and constellations.

The Summer triangle, which is an asterism, will be fairly high in the south west sky. The 3 Stars, Deneb, Vega and Altair mark the corners, of a right- angled triangle. Although they all look fairly similar, Vega is 25 light years and Altair is 16.5 light years and, as such, are reasonably close by, but Deneb is 2,615 light years away.

The three stars are actually in three different constellations. Vega, the star in the top right-angled corner of the triangle, is in the constellation of Lyra. Altair, the one which is in the furthest corner is in Aquila and Deneb is in the closest corner to Vega. Vega is part a cross shape, which is the constellation of Cygnus the Swan. The head of Cygnus is Albiero, a double star, the split of which can be seen with binoculars.

To the west of the summer triangle, is Hercules. Its main stars are in the shape of a tombstone. On the right-hand side (visible in binoculars) is M13, the Great Globular Cluster. A dense fuzzy blob of very old stars, 2,000 light years away.

## SAFE: Stourvale Action For the Environment

Pledges made on 17th June at the end of Great Big Green Week clearly showed the priorities of people of Shipston who feel it is time to do more to prevent the worsening effects of climate change. Thank you to all who contributed their thoughts and ideas about what others could do as families and individuals. Details will be announced shortly of a meeting in October to review the ideas in full and help turn them into future actions. Watch this space. To let us know you would like to join the discussion, please contact [verityrichardson@gmail.com](mailto:verityrichardson@gmail.com)

## Stour Concert Brass

Stour Concert Brass visited Stratford upon Avon Bandstand for their third and final bandstand concert of the Summer. Despite an indifferent weather forecast a sharp shower before the band arrived was the only rain in what was a pleasant afternoon. Conducted by their new conductor Nigel Hall they played their usual varied programme and Breezin Down Broadway, Bring Me Sunshine and Singing In The Rain all proved popular with the enthusiastic audience.



## Age Concern

*Serving the community in Shipston on Stour*

Chair Gill Roache reported to the Shipston on Stour & District Age Concern AGM that a record 2,031 lunches were served to residents of Shipston and surrounding villages in their three Lunch Clubs. Over 50 residents enjoyed the Christmas lunch, and the summer trips to nearby attractions and garden centres proved popular once again.

Special thanks and recognition were paid to Shipston Rotary who provide a donation, Shipston Link who provide transport for the trips, VASA for organising transport for residents who need help getting to the Lunch Clubs and to Orbit Housing for the lunch venues. The price of a lunch is being raised to £5 because of cost increases but this still represents very good value.

The work of Age Concern is only made possible by a loyal team of volunteers who cook the meals and organise the



trips. Grants of up to £200 are available for anyone who has a specific need.

This an outstanding example of a sustainable charity providing a much-needed social service for residents which both alleviates loneliness and provides a convivial environment. For more information call 01295 680309 or 07778 848431

## Shipston Probus tours the Panama Canal

David Head shared his extensive traveller experience with Probus members with a vividly illustrated review of the history and details of the Panama Canal. Considered by many to be the leading engineering wonder of the world, the canal crosses the narrow isthmus of land between North and South America and connects the Atlantic and Pacific Oceans. The route was one of the most challenging – crossing two mountain ranges and an earthquake zone, dense tropical jungle, rivers that can rise 30 feet in half an hour, landslides, 80% humidity, yellow fever, malaria – every challenge possible!

The need was to find a shorter and safer trade route from Europe to the American west coast and Far East. The French had already built the Suez Canal, and Ferdinand de Lesseps planned a similar sea level canal despite (incorrect) warnings that this would result in the Atlantic draining into the Pacific. The plan was hugely ambitious and engineering problems and high mortality rate meant that after two years all the money had been spent. The USA took over, paying France 40 million dollars, which rather upset the Columbians over whose land the canal crossed! The resulting conflict ended with a strip of land and control of the canal being ceded to the USA.

The USA’s plan was to build locks at each end to raise the ships up, and the artificial Gatun Lake in the middle. Although yellow fever was suppressed by the use of DDT, over half the 80,000 workers died. Dams to create the lake were huge with lock gates five storeys high, seven feet thick and using three million rivets in each door. Despite the size and subsequent enlargement of the locks, modern ships have only inches to spare as they navigate the locks.

Today, great container ships and cruise liners traverse the canal in about eight to ten hours at five minute intervals, controlled by computerised ‘mules’ that keep them centred. Cruise line passengers have the option of taking a land tour.

Probus members were treated to beautiful photos taken by David illustrating the magnificent wildlife including monkeys, tapir, lizards, Caymans and huge crocodiles as well as an Anaconda snake, reassuringly somnolent as it digested a recently-captured monkey! Local tribespeople were keen to show off their wealth of wildlife. David and his wife took a river trip in a small wooden canoe captained by a 12-year-old boy; when asked to get out of the canoe and help push it off a crocodile-infested sandbank both were understandably reluctant! But the reward was magnificent: butterflies, flowers, macaws, hummingbirds and a Mayan Temple deep in the jungle.

Post-talk questions and the buzz of conversation reflected yet another enjoyable and thought-provoking morning for Probus members.

Probus meets fortnightly on Fridays at Shipston Sports and Social Club. Guests and new members are most welcome. Please contact Tony Joint on 01608 663407 or [tonyjoint73@hotmail.com](mailto:tonyjoint73@hotmail.com)



## Shipston Medical Centre Update



### Flu vaccination and Autumn Covid booster campaign

We have just had information from NHS England about covid autumn boosters. At time of writing we are hopeful that we will be offering flu and covid vaccination at the same time for those eligible.

In addition younger carers, and children aged 2 and 3 are eligible for flu vaccination. Primary school aged children will be offered flu vaccination through the school vaccination service.

Vaccines will be available in October and we will be contacting people shortly to get appointments booked. Look out for further information via our patient newsletter.

website: <https://shipstonmc.warwickshire.nhs.uk/> and

Twitter: <https://twitter.com/ShipstonGP> Facebook:

<https://www.facebook.com/ShipstonMC>



### Calling on employers to encourage on-call firefighters

Warwickshire Fire and Rescue Service is keen for local employers to actively encourage their staff to become on-call firefighters. As well as helping to protect and serve the communities in Warwickshire, there are numerous advantages to having on-call firefighters within an organisation, such as empowering employees to make a significant difference in their local community. Working as an on-call firefighter fosters qualities that can be transferred into the workplace, such as personal growth, leadership skills, and teamwork abilities. Supporting the on-call firefighting programme demonstrates an organisation's commitment to its community. The Service can visit employers to explain what an on-call firefighter is, how the scheme works, and the comprehensive training and support on-call firefighters receive.

More information from

[www.warwickshire.gov.uk/oncallfirefighters](http://www.warwickshire.gov.uk/oncallfirefighters). email

[ffrecruitment@warwickshire.gov.uk](mailto:ffrecruitment@warwickshire.gov.uk)

### Letters

#### Sensory Garden

It's a crying shame that the Sensory Garden by the Rugby Club has fallen into such a state of disrepair. It is very sad that the main cause of its present state is antisocial behaviour by local youths who are probably unaware of its original purpose.

The land was originally donated by Stella Symonds and is held in Trust by Shipston Town Council to be administered by them. The Garden was created about twenty plus years ago as a tribute to the daughters of two residents who had suffered severe medical problems. The Garden was named for them – Libby Lou's – and funded with a grant from the Town Council and voluntary donations from Shipston residents. Its aim was to be a quiet space for children to play safely and a tranquil area for the use of local residents. Today, alas, it is anything but. At the time of its creation, unfortunately, no provision was made for its maintenance. This has fallen to local volunteers, mainly Ray Luker, who has worked for many years to keep the garden in good shape, and to Stour Valley Lions who have provided seating and materials for the pathways. Ray has struggled to do this work alone, whilst coping with personal difficulties, and has had to cope with abuse from local youths who have commandeered the garden for their own use. Unfortunately, there is evidence of drug abuse which is particularly distressing when one considers the basis on which Libby Lou's Garden was originally established. Mr Luker has written to Shipston Town Council with a suggestion that security cameras be installed.

Let us hope that by working together the Sensory Garden can be restored to its original haven as a place of tranquillity for all to enjoy.

Graham Williamson

#### Ellen Badger Hospital

Most of Shipston will now be aware of the fact that there will be no hospital with inpatient beds, nursing and medical staff on the Ellen Badger Hospital site, as things currently stand. Despite this fact the local NHS Foundation Trust (SWFT) insist on calling this building a hospital.

Dr Sarah Jarvis pointed out to Midlands Today on 5th August protest march that the word hospital means a building where inpatient beds and patient care are provided. She added that there is a 'desperate need for these community hospitals'. This is precisely why the EBH League of Friends and other campaigners are continuing to fight to get a Replacement Ellen Badger Hospital as applied for on original SWFT plans put forward to SDC Planning from 2020. They are also fighting for truth and clarity from SWFT. SWFT and all similar foundation trusts across the country have a duty within their charters to work 'with the community for the community' and that is not happening.

The campaign is now moving forward to the highest level of complaint available against SWFT and the Coventry and Warwick Integrated Care Board.

Maggie Goren

## Your Town Councillors



### Gerry Kelly, Mayor

Planning Committee Vice Chair

t: 07471 687720

e: [gerry.kelly@shipstontowncouncil.org](mailto:gerry.kelly@shipstontowncouncil.org)



### John Dinnie Deputy Mayor

Enviromental Working Group, Co-Chair

t: 01608 664590

e: [john.dinnie@shipstontowncouncil.org](mailto:john.dinnie@shipstontowncouncil.org)



### Ian Cooper

Finance Working Group Chair

t: 01608 663785

e: [ian.cooper@shipstontowncouncil.org](mailto:ian.cooper@shipstontowncouncil.org)



### Paul Tesh

Planning Committee Chair

t: 07711 433566

e: [paul.tesh@shipstontowncouncil.org](mailto:paul.tesh@shipstontowncouncil.org)



### Jo Barker

t: 07748 968712

e: [jo.barker@warwickshire.gov.uk](mailto:jo.barker@warwickshire.gov.uk) (for town and county matters)



### Tony Booth

General Purposes and Communications Working Group Chair

e: [tony.booth@shipstontowncouncil.org](mailto:tony.booth@shipstontowncouncil.org)



### Hilary Kelly

Enviromental Working group, Co-Chair

e: [hilary.kelly@shipstontowncouncil.org](mailto:hilary.kelly@shipstontowncouncil.org)



### Sarah Beckett

e: [sarah.beckett@shipstontowncouncil.org](mailto:sarah.beckett@shipstontowncouncil.org)



### Brian Cooper

e: [Brian.Cooper@shipstontowncouncil.org](mailto:Brian.Cooper@shipstontowncouncil.org)



### Chris Howarth

Heritage, Amenities and Leisure Projects Working Group Chair

e: [chris.howarth@shipstontowncouncil.org](mailto:chris.howarth@shipstontowncouncil.org)



### Michelle Kelly

e: [michelle.kelly@shipstontowncouncil.org](mailto:michelle.kelly@shipstontowncouncil.org)



### Richard Walters

e: [richard.walters@shipstontowncouncil.org](mailto:richard.walters@shipstontowncouncil.org)



### Vacancy

## Useful Contacts

Community Links Transport	01789 264491
Shipston Library:	0300 5558171
- 24/7 renewal line	01926 499273
Highways customer services	01926 412515
Severn Trent Emergency Line:	0800 7834444
Shipston Volunteer Transport Scheme	01608 663122
Shipston Leisure Centre	01608 662354
Shipston Medical Centre	01608 661845
- Out of hours	111
Shipston Link (local transport)	01386 593446
Shipston Recycling Centre	01926 412593
Stratford District Council	01789 267575
Townsend Hall	07514 704057
Warwickshire County Council	01926 410410
UCHW Hospital	024 7696 4000
Warwick Hospital	01926 495321
<b>Local police (non emergency)</b>	<b>101</b>
Shipston Police Safer Neighbourhood Team:	01789 444670
shipston.snt@warwickshire.police.uk	
<b>Churches of Shipston:</b>	
Stour Valley Baptist	01608 664876
Our Lady & St Michael	01608 685259
St Edmund's	01608 661210
Methodist Church	01295 257193

### Shipston-on-Stour Town Council

New Clark House, West Street, Shipston-on-Stour, CV36 4HD

### Town Clerk

t: 01608 662180 e: [clerk@shipstononline.org](mailto:clerk@shipstononline.org)

### County Council Contact:

### Councillor Jo Barker

t: 07748 968712 e: [jobarker@warwickshire.gov.uk](mailto:jobarker@warwickshire.gov.uk)

### District Council Contacts:

### Dave Passingham (Shipston South)

e: [dave.passingham@stratford-dc.gov.uk](mailto:dave.passingham@stratford-dc.gov.uk)

### Olivia Hatch (Shipston North)

e: [olivia.hatch@stratford-dc.gov.uk](mailto:olivia.hatch@stratford-dc.gov.uk)

## Something exciting to share?

If you have a story that's relevant to Shipston residents, please contact the editor, Laura Parker, on 07989 530069 or email: [forum@shipstononline.org](mailto:forum@shipstononline.org)

To request posts on the council's Facebook and Twitter feeds, contact Peter Cox.

### Forum copy deadline:

### Second Monday of the month

- but the sooner you can notify the editor of a potential story the better.

The Shipston Forum is produced monthly by the Town Council.

While every effort is made to ensure information is accurate, the Town Council and its contractors do not accept responsibility for material submitted by readers or third parties and does not endorse any organisation or event publicised. Contributions may be edited to fit available space.





ShipstonFoodFestival.org



# Sunday 10th September

## Coming to the Market Place

Supported from the Covid Recovery Fund by Stratford District Council



# Shipston Food Festival

## 10am to 4pm

**Bought to you by Stour Valley Lions**  
*All profits to support local Lion Charities*

Postcode for SATNAV: CV36 4AA  
Charity Reg No: 1191826

