



# Shipston Forum



## Henry heads for the London stage

Shipston's Henry Clarke has won a place on the musical theatre course at the prestigious Mountview Academy of Performing Arts in London, gaining one of the very few spaces that hundreds apply for every year.



Henry's passion for musical theatre has been encouraged by the Proms, where he has been taking part for the past few years. This year he is one of the principals in Songs From The Shows at Townsend Hall on Friday 3 July.

Henry studied at Alcester Grammar and went on to do A levels and study performing arts at Birmingham Ormiston Academy. Watch out for him on the West End Stage in a few years' time!

## Catch the last of the Proms

How are you enjoying the Proms so far? Shipston's unique and eclectic musical extravaganza is underway, but there is still time to catch more events.

Support talented musicians from the local area at the Young Musicians Concert at Barcheston Church at 7.30pm on Tuesday 30 June.

Take part in the ever-popular Open Mic Night at The Black Horse at 7pm on Wednesday 1 July, hosted by Barney Porter. Any age, any genre!



Enjoy Songs from the Shows at The Townsend Hall at 7.30pm on Friday 3 July. £10 on the door, with free entry to under 12s and Friends of the Proms.

And let your hair down at the famous Last Night of the Proms street party on Saturday 4 July, kick-started by the winning act



from Shipston Introducing, the town's very own X-Factor. Next up is Orange River Remedy – a great choice for American Independence Day – followed by amazing party band The Texan Peacocks, and their range of classic

covers. Then – 'you name it, we rock it!' – it's the mighty DropOuts with their crowd-pleasing rock anthems.

## Ducks race to victory

A sunny Sunday in May saw a commotion on the river bank as the annual Great Duck Race got underway, with participants eagerly willing their ducks to paddle faster to victory. There was a full race programme, with businesses in Shipston sponsoring the feature mallards race. A bar, food stalls, ice creams, coffees, face painting and a mini funfair added to the fun for all the family.



The day, sponsored by The Fuzzy Duck at Armscote, is a joint venture between Stour Valley Lions and Shipston on Stour's Angling Club. The £2,800 raised will be split equally between Fish 'n' Frolics and Shipston's Youth Club.

## New musical director

Paul Whitmore is the new director of Shipston Town Band, taking over from Alex Bland. An experienced musician with a history of brass banding, Paul is keen to promote local composers and new music as he leads the 114-year-old brass band. He says: 'I am passionate about encouraging brass players to improve and enjoy their music making. I also invest time in programme-planning to ensure that those who hear the band have an enriching experience.'

## Can you help?

Could you share a skill, or show how you support a local initiative? Shipston High School's students will be taking part in a community day on 14 July. If you're involved in a community activity, or could give a workshop or talk on your community involvement, the school would love to hear from you. You could inspire future career pathways and help students feel more connected to their community. See page 11 for more information and how to get involved.

The Townsend Hall, which runs an amazing number of events over the year and is a key venue in town, is looking for more people to become involved either as a trustee or volunteer. Find out more on page 13 and go along to the AGM on 7 July.

## In this issue

SOS Shipston latest – page 5

Tallest sunflower competition – page 8

Bookfest announces first events – page 8

Support the High School's Community Day – page 11

Stories from Shipston's Workhouse – page 12

## Mayor's column

It has been a busy few weeks across our community and I wanted to share a few updates from around the town.

One of my first decisions as Mayor was to select Shipston Home Nursing as my Charity of the Year. It is a genuinely outstanding Shipston-based charity that provides hospice-at-home care and support to patients and families across South Warwickshire, from Shipston itself to Bidford, Kineton, Wellesbourne and many of our surrounding villages. Their work allows people facing terminal illness to remain in the comfort and dignity of their own homes, surrounded by loved ones. Like many local people, I have long admired the charity, and I am proud to support their fundraising efforts over the coming year.



I was also delighted, along with many councillors and residents, to attend Shipston Amateur Dramatic Society's recent production of *The Unfriend*. It was a fantastic production and a reminder of the incredible talent we have within our community. Particular congratulations should go to everyone involved both on and off stage, including former Mayor Councillor Kelly, Deputy Mayor Michelle Kelly and one of our excellent Town Clerks, Debs Hardiman, who all played important roles in bringing the production to life.

On the subject of Debs, many residents will know that she will shortly be leaving her role with the Town Council. Debs has been a much valued member of the office team and has made a significant contribution to the council and the wider community during her time with us. She will be very much

missed by councillors, colleagues and residents alike. On behalf of the whole Town Council, I would like to thank her for everything she has done for Shipston and wish her every success and happiness in her next adventure.

Finally, no local update would be complete without mentioning the South Warwickshire Local Plan. The process appears to continue to be, at best, somewhat chaotic, with timetables, consultation periods and expectations seemingly changing with alarming frequency. The Town Council remains in the rather lamentable position of being a 'statutory consultee'. In simple terms, Stratford District Council is required to ask for our views, but it is under no obligation to follow them and, often chooses not to.

Despite these limitations, the Town Council is working hard to stay close to developments and understand the potential implications for Shipston and the surrounding area. We remain grateful to our District and County Councillors for keeping us informed and helping ensure that local concerns continue to be heard as the process unfolds.

As always, a really special thank you to the many volunteers, community groups and residents who make Shipston such a great place to live. Your efforts continue to strengthen our town and make me proud to serve as your Mayor.

**Richard Walters**

**Mayor of Shipston**

## News from Shipston Town Council's June meeting

### Environment

Pathway reinforcement to give greater access to Cornmill Meadows was given the go-ahead. SAFAG expenditure was approved for dam repair.

### Planning

Springfield Farm Rise: objection based on overdevelopment for size of plot and proposed hard surfaces.

### Finance

Approval was given for agenda items. Council was reminded that working groups' decisions on expenditure have to be approved by the full council. In line with the AGAR (Annual Governance and Accountability Return), more financial information will be made available on the website. The Responsible Finance Officer (here the Town Clerk) has responsibility to ensure transparency.

### Town councillor reports

Council thanked the volunteers who helped clear up the Sensory Garden after it was vandalised. The General Purposes working

group will consider a request made via museum volunteers to have a brown sign to direct visitors. Cllr Benjamin-Smith has completed two WALC (Warwickshire & West Midlands Association of Local Councils) courses. Cllr Williams has done a small survey of shops and found that sales appear to be down since the bank closed. Cllr Crockett reported comments by residents of Chapel View about exercise equipment related to the developers' obligations.

### Stratford District Council

Cllr Hatch reported that the debate about the Local Plan has been delayed until 13 July. She will make representations relating to infrastructure, potential loss of employment land, travel (from the Shaping Travel in Shipston report), provision for sixth form education, road safety and fire station cover. (see *District Councillor column, page 14*).

## Sensory garden vandalised

In May, the Sensory Garden in Mayo Road was restored after a lot of hard work by volunteers who were rightly proud of their efforts. Sadly, only a few weeks later, the garden was vandalised. Shrubs and small trees were broken, bird boxes pulled down, flowers pulled off and strewn around. 'It was all very upsetting for the volunteers who rallied round to tidy up, and they were all wondering...why?' says Cllr Hilary Kelly.

If you live nearby, please let Hilary Kelly know if you might be prepared to pop in now and again to keep an eye on the garden. [hilary.kelly@shipstontowncouncil.org](mailto:hilary.kelly@shipstontowncouncil.org)

## Library update

Shipston Library Coffee Mornings, a new regular monthly event, will be held on the first Thursday of the month from 10-11am at the Library. Two have now been held since the initiative started in May. The coffee mornings feature talks from local authors and local interest speakers, which are free to attend with no booking required. Free refreshments are also available.

The next talk is Thursday 2 July 10-11am (see *advert on page 10*).

## Medical Centre News

The refurbishment works at the Badger Crescent site are progressing well and are on schedule for completion during summer 2026 as planned. This is just the first phase of work which mainly covers the front section of the building, creating an updated reception area and waiting room, and reconfigured administrative space to give our large back office team the working environment they



## Warwickshire County Council

Cllr Barker drew attention to the school holiday activities and food programme (HAF) that will run during the summer holidays.

### Blue Light update

Shipston First Responders have taken on three new recruits who have passed the necessary courses. There were 57 category 1 or 2 call-outs in May, and five defibrillators were activated. Cllr Booth stated that when the First Responders were first formed, they attended two or three call-outs per month.

### High School

The new sports hall building is continuing. The school will be holding its annual community day on 14 July, where students will be looking for opportunities for community involvement.

## Letter

I'd like to offer some balance on the subject of solar panels. The developer of the scheme proposed locally at Honington put the scheme's life at 40 years, not 25. Rather than leaving soil depleted, land rested from intensive farming, with no ploughing, pesticides or fertiliser, and grazed and naturally fertilised by sheep, recovers its organic matter and structure. Working solar farms have been found to develop species-rich grassland supporting more wildlife, including struggling farmland birds, than the arable they replaced, and the developer must by law deliver at least a 10% gain in biodiversity.

I'd encourage everyone to read the planning documents and judge for themselves, on facts. Let's start conversations now on how the town and residents might benefit, ahead of any planning decision being made.

*Ian Drew, Shipston-on-Stour*

need to support patient services efficiently. Further upgrades to clinical rooms and to the rear part of the building will follow when funding allows.

While the new rooms at the Ellen Badger Hospital have greatly increased our clinical space, they've simply brought us closer to the capacity required for our growing patient population.

During the refurbishment period, some services have had to remain at the Badger Crescent site as there just isn't enough room at the Ellen Badger to accommodate all of our clinical support, administration and secure storage requirements. Dispensary has to remain at the medical centre because medicines must be stored, handled and dispensed under strict safety regulations.

We're grateful to everyone for their patience and understanding as these works progress. The renovation represents an investment in the future, ensuring our facilities remain fit for purpose and able to provide quality care for our community.

## SAFAG calls for rain!

Following a full review of the interventions on Brexit Brook (also known as Stretton Brook), Shipston Area Flood Action Group arranged for a contractor to carry out the major repair and rebuild works. This left the minor upgrades and maintenance tasks for a SAFAG work team who revisited the location to complete these on 22 May, which turned out to be a very hot day, and not conducive to manual work. Nevertheless, Mike McCarthy and John Dinnie, together with volunteers John Fedorowycz and Trevor Bradnam, raised the height on four of the leaky woody dams, using on-site materials, with ratchet lashings to secure the structures.

Some re-seeding around the banks of the watercourse will be required, but this was deferred until weather conditions are more favourable – rainfall was needed!

These workdays are proving to be very useful in helping to mitigate the cost of maintenance work, as well as giving the SAFAG team the opportunity to complete minor repair/upgrade works.



One of the dams where the height has been raised and secured with ratchet lashings. Left to right, Mike McCarthy, John Dinnie and Trevor Bradnam.

## SHWP: Warm Hub news

Now that the weather has changed for the better, the Warm Hub has changed with the times. This community initiative is still a lovely place to come for a drink and refreshments, where you will be assured a warm welcome and lots of activities to entertain. Sessions will continue, as before, on Monday 10am-12 noon and Thursday 10am-12 noon. In the hot months, the space is considerably cooler and very refreshing, and as such, we are now naming it The Community Hub. It is open to all, and free to come along. We look forward to welcoming new faces.

The Stour Toy Library continues to grow. As ever, the sessions are on a Tuesday 9.30-11am and Thursday 11am-12 noon. For those that don't know, there is an annual £5 membership fee, but from then on, all toys are free to borrow. We have over 150 different toys, for children aged 0-4.

The Repair Café is also growing in popularity which is fantastic to see. In May we repaired, or attempted to repair, over 20 items, saving many things from landfill and encouraging community engagement. Everyone who assists is a volunteer who gives up their time to make these things happen, and SHWP would like to say a heartfelt thank-you for all their hard work. It would not be possible to put on so many activities without their help.

In July, SHWP aims to do a community survey to understand how accessible Shipston is to people with accessibility needs. We hope to work with Shipston High School students to conduct a survey amongst the retail premises and public facilities in Shipston.

If you would like to understand more, please email Rowena@shwp.org.uk for further details.

# JULY 2026

SHWP  
Charity No. 1192236

**Contact details for activities in Shipston on Stour**

Warm Hub, Toy Library and Bereavement Cafe: 01428 691128	rowenac@shwp.org.uk
Strictly Fitness: 07754 456947	michelle@legals@gmail.com
Seated and Standing Tai Chi: 01858 931699	julieweed11@gmail.com
Plates for Beginners: 07854 369444	webbing@stour.co.uk
Disabled Eating Drop in Clinic: 0203 466890	carphd@umadon.co.uk
Eating Disorder Support Group: 01910 605447	ronnotemesh@stos.co.uk

	MONDAY	TUESDAY	WEDNESDAY	THURSDAY	FRIDAY					
<b>1st Week</b>	Warm Hub 10-12 Seated Exercise 9:30, 10:30 or 11:30	Pickleball 1:30-3:30 Disabled Eating Drop in Clinic 9:30-10:30	Strictly Fitness 10-10:45 Bereavement Cafe 11-1	Toy Library Stay and play 9:30-11:00	Seated Tai Chi 9:30 Standing Tai Chi 10:30 Booking required	Indoor Curling 2-3	Warm Hub 10-12 Cooking with Wendy. Booking required	Toy Library 11-12 Annual membership £5	Eating Disorder Support Group 7:00-8:30	Plates for Beginners 9:30-10:15
<b>2nd Week</b>	Warm Hub 10-12 Seated Exercise 9:30, 10:30 or 11:30	Pickleball 1:30-3:30	Strictly Fitness 10-10:45	Toy Library Stay and play 9:30-11:00	Seated Tai Chi 9:30 Standing Tai Chi 10:30 Booking required	Indoor Curling 2-3	Warm Hub 10-12 Cooking with Wendy. Booking required	Toy Library 11-12 Annual membership £5		Plates for Beginners 9:30-10:15
<b>3rd Week</b>	Warm Hub 10-12 Seated Exercise 9:30, 10:30 or 11:30	Pickleball 1:30-3:30	Strictly Fitness 10-10:45	Toy Library Stay and play 9:30-11:00	Seated Tai Chi 9:30 Standing Tai Chi 10:30 Booking required	Indoor Curling 2-3	Warm Hub 10-12 Frailty Nurse Drop in Sessions	Toy Library 11-12 Annual membership £5		Plates for Beginners 9:30-10:15
<b>4th Week</b>	Warm Hub 10-12 Seated Exercise 9:30, 10:30 or 11:30	Pickleball 1:30-3:30	Strictly Fitness 10-10:45	Toy Library Stay and play 9:30-11:00	Seated Tai Chi 9:30 Standing Tai Chi 10:30 Booking required	Indoor Curling 2-3	Warm Hub 10-12 Bereavement support from SHWP	Toy Library 11-12 Annual membership £5		Plates for Beginners 9:30-10:15

**Venues**  
 Community Wellbeing Hub @ Ben Bogger Road CV36 4EY  
 Townsend Hall CV36 4AE  
 Scout Hut CV36 4EW

KEY

● Free

★ Need to book, waiting list

## Fell Mill is very much at risk!

The key message now is that the developers proposing the 1,150 houses for Fell Mill are actively putting their documents together ready to submit their planning application imminently. SOS Save our Shipston will, of course let you know as soon as that is submitted so we can heartily and intelligently object to it as a community.



We still have planning applications in West Shipston awaiting decisions at Stratford District Council (SDC) which are highly likely to be decided over the next few months, and which Shipston Town Council has strongly objected to.

There has been a lot of news recently about the next draft of the South Warwickshire Local Plan (SWLP). Despite what's been in the press, the draft is continually being changed and at time of writing, it is still only in draft form and likely to remain so until July/August. The extended Area of Restraint is helpful to SOS aims but is still subject to future revision and agreement.

We have chosen to hold off publicising/guessing what the next draft may contain until it has been finalised by SDC – until then nothing is certain. The SWLP won't have any influence anyway until it has passed Government inspection which is due late this year/early next year and it won't have significant planning weight until 2028. So the Fell Mill development is still a distinct possibility unless you and SOS can help stop it.

In the meantime, we all dearly hope SDC will refuse the Fell Mill planning application – at which point the developers are likely to appeal the decision. That's when the SOS legal team will come into play thanks to the ongoing donations we are receiving from residents and other interested local parties.

We are continuing to raise funds to be able to meet this challenge and we will be ramping up our campaign as soon as the Fell Mill planning application is submitted. In the meantime, please continue to donate and get your badges for a donation at Morrisons, Little Vins, The Little Bird Shop and Larks Meadow Farm and wear them frequently and with pride!

Keep tuned through our social media and help others who don't use these channels by signing up to our monthly emails from our website: [www.saveourshipston.org](http://www.saveourshipston.org).



In other news, we recently had a march to draw attention to our heritage and the long-distance paths due to be re routed if the development at Fell Mill goes ahead. Members of the English Civil War Society and residents braved the searing heat to march

along a section of the Shakespeare Way. Not a huge event by any means, although the videos we posted have received more than 6,500 views, more than any other reel we have put up! So it certainly raised awareness and got



more followers who will no doubt contribute to the number of objections we hope to raise to Fell Mill. One passing cyclist thought we were marching to London to take on Parliament – a tempting thought. Maybe when it's a bit cooler!

[www.saveourshipston.org](http://www.saveourshipston.org)    @SaveOurShipston  
 @SaveOurShipston    Say No to additional 3000+ houses

To donate through [gofundme](https://www.gofundme.com)

Please go online and type in the link below:

[gofund.me/tailbearform](https://www.gofundme.com/go/tailbearform)

To donate directly:

Bank Name: HSBC  
 Account Name: SaveOurShipston  
 Sort Code: 48-18-57  
 Account Number: 60778736

## Holiday at Home

Last month we held another Holiday at Home in the Townsend Hall where senior locals enjoyed a quiz challenge over coffee and biscuits. After the answers were given, many guests moved on to crafts including hand-painting a wooden wreath and making birthday cards, while others played dominoes (a very complicated version), crib or word games. Some preferred jigsaw puzzles. Towards lunchtime, Revd Daniel Pulham, from Stour Valley Baptist Church, gave us an amusing talk about his goldfish before saying grace as lunch was ready. A wonderful two-course, home-cooked meal followed, and the cleared plates showed how much it was enjoyed. After a nice cup of tea, the guests were entertained by a band from Ilmington called Weird Side of Average, with many toes tapping and hands clapping along with the beat.

Holiday at Home is organised by Christians Together in Shipston and we are very grateful to the Lions who give us a very generous donation to enable us to cover the cost of the hire of the Townsend Hall. The next Holiday at Home will be on 24 August. Details will be in the August Forum.



Guests entertained by the band.

## Regular Events

### Monday

**IT Help!:** 10am-12pm Shipston Library (appointment only)

**Story Stomp:** 10am, Shipston Library.

**Shipston Community Warm Hub:** 10am-12pm, Ellen Badger Health and Wellbeing Hub

**Seated Exercise Class:** 10:30am or 11:30am, Ellen Badger Health and Wellbeing Hub

**Pickleball:** 1:30pm-3:30pm, Townsend Hall.

**The Stour Toy Library:** 11am-12noon at Ellen Badger Health and Wellbeing Hub

**Shipston Duplicate Bridge Club:** 6:50pm for 7pm start. The Church Room, Darlingscote Road, Contact Matthew Hunter - 01608 684499

**Shipston Knitting and Crochet Group:** 7-9pm, Low Furlong

### Tuesday

**Strictly Fitsteps Fab:** 10am, Townsend Hall

**Rhyme Time:** 10.30am, Shipston Library

**Dementia Café:** Shipston Lodge, 10.30am-12pm

**The Stour Toy Library: Stay and Play:** 9.30am-11am, Ellen Badger Health and Wellbeing Hub. <https://borrow.shwp.org.uk/>



**Age Concern Lunch Club:** Stour Court 12pm. Contact Jill Case 01608 662226

**Baby Time (under 12 months old):** 12:30pm-2pm, Badger Valley Children's Centre, Tileman's Lane. Book via Eventbrite.

**Let's Play for Toddlers:** 1:15pm-2:45pm, Badger Valley Children's Centre, Tileman's Lane. Book via Eventbrite.

**Lego Club:** Shipston Library, 3.30pm

### Wednesday

**Seated Tai Chi:** 9.30am, Scout Hut

**Stour Valley Stitchers:** 10am-1pm, 1st & 3rd Wed, The Hall, Stourton, CV36 5HG

**Standing Tai Chi:** 10.30am, Scout Hut

**GLOSS Coffee Morning:** 11am, The White Horse

**Indoor Curling:** 2pm, Townsend Hall

**U3A weekly scrabble:** 2-4pm at the George Townhouse. Free for all U3A members.

**Shipston Training Band:** 6pm-7pm at the Band Hall, New Street CV36 4QR

**Shipston Town Band:** 7.30pm-9.30pm at the Band Hall, New Street CV36 4QR

### Thursday

**Shipston Community Warm Hub:** Every Thursday 10am-12pm, Ellen Badger Health and Wellbeing hub

**Community Social Prescriber drop in:** 10am-12pm, Ellen Badger Health and Wellbeing Hub

**The Stour Toy Library** click and collect 11am-12noon, Ellen Badger Health and Wellbeing Hub. <https://borrow.shwp.org.uk/>



**Age Concern Lunch Club:** Rainbow Fields 12pm. Contact Christine Grant 07939 595600

**Scrabble Club:** 2pm-4pm, Shipston Library

**Stour Singers:** We rehearse on Thursdays from 7.30-9.30pm at Shipston Primary School. Contact Gayle Burch on 07791 769102

### Friday

**Pilates for Complete Beginners:** 9.30am Townsend Hall

**Walks with a friendly group:** 10am Mill car park. Call Marleen 07456 578467

**Age Concern Lunch Club:** Fortnightly, Rainbow Fields, 12pm. Contact Maryann Dobbin 07779 730774

**Shipston Stitchers:** Every fortnight at The Church Room, Darlingscote Road. Contact Anita Spencer on 01993 832665

**Shipston Knitting and Crochet Group** - Friday afternoons in Mrs. Browns from 2-4.30pm

**Alcoholics Anonymous:** 7.30-9pm, Ellen Badger Health and Wellbeing Hub, 28 Stratford Rd, Shipston-on-Stour CV36 4AU, 01865 242373, 0800 9177 650

**Stour Concert Brass:** 7.45pm-9.15pm at the Band Hall, New Street CV36 4QR

### Saturday

**Lego Club:** Shipston Library. From 10am

**Shipston Food Bank:** 10.30am-12pm, St Edmund's Church, Shipston. No referral or voucher needed

## What's On Calendar: July 2026

**1st Shipston on Stour WI:** Social evening on the theme of, 'I do like to be beside the seaside'. Meetings held every first Wednesday of the month in The Catholic Church Hall, Darlingscote Road Shipston on Stour CV36 4DR at 7pm. For more information contact: Gill Smith – Telephone 07759 232899

**1st & 15th Stour Valley Stitchers:** 10am-1pm, The Hall, Stourton, CV36 5HG. 1st & 3rd Wednesdays

**2nd Shipston Library Coffee Morning:** See ad on page 10

**3rd Evening Swift Walk:** 7.00pm-9:45pm. See article in centre pages

**4th Shipston Town Council Monthly Litter Pick:** All welcome. Meet at New Clark House, West Street at 10am. Equipment and refreshments provided. Children's equipment available

**4th Shipston Proms:** Last Night.

**5th Lego Church:** 10.30am, first Sunday of the month during morning service at St Edmund's. For school age children. Please bring an adult. Contact rector@shipstonchurch.org.

**7th Bereavement Café:** 11am-1pm, Ellen Badger Health & Wellbeing Hub first Tuesday of each month

**7th Shipston Library Reading Group:** 2pm-3pm first Tuesday of each month

**7th & 21st 'Dance for Joy' Bi-Monthly Circle Dance Group** in Stretton on Fosse 2.30 – 4pm. First and third Tuesday of each month. Dances from around the world – all taught from scratch. Please contact Geri Hunting geraldinehunting@icloud.com or 07968 338848

**11th Tredington Village Fete:** The Lion. 1-4pm.

**13th Town Council Meeting:** 7pm, New Clark House

**14th Stour Community Awareness Network (SCAN):** See ad on page 10

**14th Stour Valley Lions Meeting:** 6.30pm for 7pm, Catholic Church Hall, Darlingscote Road, second Tuesday of the month

**16th Drop-In Clinic:** For the over 65s. 10am-12pm, Ellen Badger Health & Wellbeing Hub. Every third Thursday

**17th Royal British Legion Social Evening:** The Shipston on Stour Branch gathers for a social event on the third Friday of each month at The Horseshoe, starting at 7:30pm. Additionally, every other month, the Branch Committee meets on the third Friday at St Edmund's Church from 6.30pm to 7.30pm, before joining the social gathering. If you are interested in Branch events or enquiring to join the Branch, please contact the Branch Secretary, Ali at ShipstonOnStour.Secretary@rbl.community

**18th Shipston Lodge:** Summer Fete. See ad on page 16

**25th Fish n Frolics:** See ad on page 16

**28th Shipston U3A:** See ad on page 7

**28th GLOSS (Great Ladies of Shipston and Surroundings).** A social group for women to have fun and make friends. 7.30pm- 9.30pm at the Catholic Church Hall, Darlingscote Road. The 4th Tuesday of every month (except December). All ladies welcome. Entry £2.

**30th Local Quaker Meeting for Worship:** St Edmund's Church, last Thursday in the month at 2.30pm, followed by tea/coffee, biscuits & chat

**SHIPSTON ON STOUR AREA U3A**

Registered Charity No. 1170668

**TUESDAY 28 JULY 2026**  
**2 pm TOWNSEND HALL**



**CHIPPING CAMPDEN SILK MILL  
 & COVENTRY RIBBONS**

**An illustrated talk by Dick Cluley**

For a brief period from 1770 to 1860, the North Cotswold towns of Chipping Campden, Winchcombe and Blockley experienced industrialization in the form of watermills which boosted the local economy, employing several women and children who prepared raw silk for the thriving Coventry silk ribbon industry. Coventry was the main producer of silk ribbons during that period and did not have sufficient waterpower to drive the machinery for the throwing process. The mills relied on water power as this was before the days of steam. Dick will describe the building and the processes that were carried out during that period and some of the people involved. I will also give some background to the industry and describe the production of silk ribbons carried out in Coventry.

Free entry for u3a members.

Visitors are welcome - £2 to include refreshments

**DO YOU LIVE  
 IN SHIPSTON**

**(IF SO YOU COULD  
 APPLY FOR A GRANT)**



SHIPSTON-ON-STOUR EDUCATION CHARITY GRANTS FOR 2026/27  
 ARE YOU A SHIPSTON RESIDENT UNDER 25 YEARS OLD?

You can now apply for an **Educational Grant** to support you if you are due to undertake an Apprenticeship, Professional or Trade qualification or follow a Further or Higher Education course. If so, you can apply for a **Grant** for the 2026/27 year.

Application forms are now available from the **Shipston Library**.

Or write to **The Clerk to the Trustees, Mr D Squires, Pinnegar House, 49 Telegraph Street, Shipston CV36 4DA** enclosing a stamped addressed envelope or email [ds@pinnegards.com](mailto:ds@pinnegards.com) for an Application form.

COMPLETED FORMS MUST BE RECEIVED BY FRIDAY 29 AUGUST 2026

We've been doing some number crunching at  
 Foodbank.

Thanks to generous donations of food and money, in  
 the last 3 months we have been able to feed people  
 who need us in Shipston and the surrounding villages.

If you need help, come along from 10.30 - 12.00 on  
 Saturdays at St Edmund's Church. You don't need a  
 voucher.

If you are able to donate food, you can do so in the  
 Co-op or Tesco or in the porch of St Edmund's every  
 day.



296 bags of shopping



96 different families

SHIPSTON TOWN COUNCIL

**WE'RE  
 HIRING!**

**ADMIN OFFICER**

MONDAY TO FRIDAY | 9:00AM - 1:00PM



Provide admin  
 support to the  
 Town Council



Manage correspondence,  
 emails and  
 telephone enquiries



Maintain records  
 and support  
 meetings



A rewarding part-time role at the  
 heart of the local community!



**INTERESTED?**

Send your enquiries or CV to:

[emily.booth@shipstontowncouncil.org](mailto:emily.booth@shipstontowncouncil.org)

## Tallest sunflower competition



Shipston Rotary's annual competition has been launched, with two classes, under 11 years, and over 11 years. Sunflowers will be measured in their gardens on Saturday 15 August. The winner in each class will receive a certificate and an Amazon voucher. To enter, please contact Fay Ivens on 01608 662133 or email [fivens13@gmail.com](mailto:fivens13@gmail.com)

## Bookfest announces family events

The town's book festival returns for a third year this autumn, from 18 September to 27 September 2026, and the committee is excited to announce the first two family events. (See also ad on page 16).

On Saturday 26 September, we're hosting a special event with much-loved broadcaster, actor and author Alexander Armstrong. Alexander will be speaking about his children's series, *Evenfall*, and his journey to becoming an author.

The Bookfest committee are also delighted to welcome Nicola Baker, familiar to many from Channel 4's *Our Farm in the Dales* with her husband Matt Baker, on Sunday 20 September. In this free event hosted in partnership with Shipston Library, Nicola will discuss her heartwarming children's books set on Whistledown Farm, inspired by life in the countryside and outdoor adventures.

The full programme will be announced soon on Shipston Bookfest's website and social media ([www.shipstonbookfest.org](http://www.shipstonbookfest.org) and @shipstonbookfest on Facebook and Instagram). For now, please save the dates: 18-27 September 2026. We hope you'll join us for another joyful festival, celebrating books and reading.

## The swifts gave me a scare!

Having arrived in small numbers at the beginning of May, the swifts occupied their box for a few days and then vanished! There was no sight nor sound of them for about a fortnight. As cold, wet weather set in for a period, they had obviously gone somewhere warmer and brighter.

But back they came in larger numbers as the weather heated. All three pairs have now returned to their boxes on my house and they're settling down to raise this year's chicks. Swifts can usually be seen and heard overhead in Shipston on warm, still evenings in June and July.



If you focus high in the sky you will see a dozen or more in high-flying screaming parties. It's very hard to count the number as they swoop and glide at altitude, but it does become easier as they gradually descend nearer to their nest sites for roosting.

Have you ever thought about having an Allotment?

Would you like to join our Waiting List?

Contact us at - [enquiries@shipstontowncouncil.org](mailto:enquiries@shipstontowncouncil.org) or call 01608 662180 for more information.

To ensure the future of these red-listed birds in Shipston, we urgently need to record where they are nesting. Do please keep a lookout when you see them skimming around at rooftop level: you might be able to spot when and where they enter a nest hole in the eaves. Let's make this a Citizen Science project to demonstrate how much we value these amazing birds! Please contact me with any sightings.



Swift Awareness Week is 26 June to 5 July. The Annual Swift Walk is Friday 3 July, 7pm 9.45pm.

Jacey Jackson [swifts@2jays.co.uk](mailto:swifts@2jays.co.uk)

## Museum's Dorn display

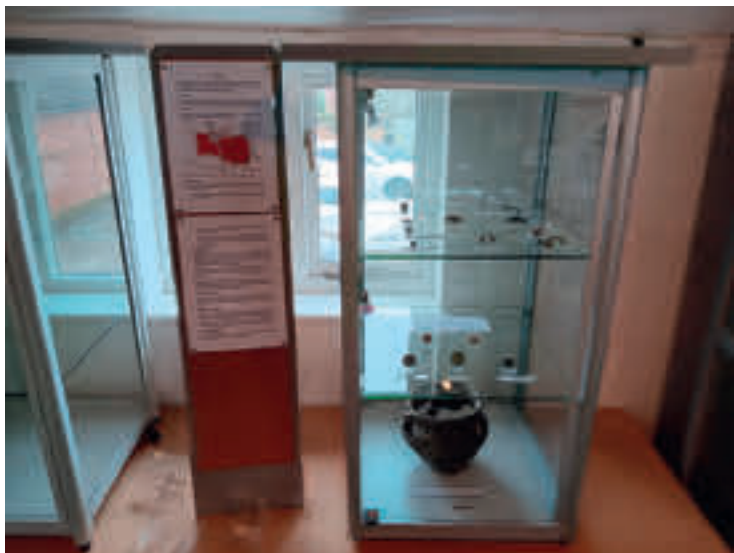
Just six miles from Shipston lies the hamlet of Dorn, a modest place with a remarkable Roman past that few visitors might suspect. Now part of Shipston Museum's Roman display, the story of Dorn reveals how a seemingly ordinary location became a bustling provincial settlement nearly 2,000 years ago.

Positioned close to the Fosse Way, Dorn flourished as a key roadside settlement, or *vicus*. From the first to the fourth centuries AD, this small town thrived as a vital hub where traders, soldiers, and travellers converged. Archaeological evidence suggests Dorn may have functioned as both a posting station and market centre, with stone buildings, workshops, and dwellings scattered across the site.

What makes Dorn particularly interesting is how thoroughly Romans integrated into everyday life here. The artefacts on display – recovered through careful excavations at Old Farm – tell stories of commerce, craftsmanship, and daily routines. Visitors can examine brooches from across the Roman period. Coins span from pre-Conquest times through to the reign of Honorius, bronze items include decorative mounts and practical pins, while lead dice and tokens hint at leisure and gaming. A coin book documents the monetary history of the site.

Today, most of Roman Dorn lies peacefully beneath farmland, but through geophysical surveys and aerial imagery, archaeologists have mapped its layout, revealing a settlement that deserves far greater recognition.

Why not visit Shipston Museum this summer on Saturdays and Sundays to discover Dorn's story, alongside displays on the Tramway's 200-year history and the Hidden Stories of local notables.



## Proms plea

The Proms committee, who are all volunteers, pulled this year's Proms together at short notice – at one point it looked like it wasn't going to happen. Thankfully, more people came forward to offer to give up their time outside of their working days to ensure that this fantastic community event could continue. There



were a few setbacks along the way, including SDC's refusal of a license for the Ibiza on Stour event, but a compromise was found and thankfully the event went ahead. The Proms is an important part of the town's culture and brings the community together like no other event. The committee would love to hear your views on this year's event, and what you would like to see added to next year's line up, so please get in touch through the website or social media pages.

## Look at the stars

*Adrian Wakeham, a member of the Stratford-upon-Avon Astronomical Society, shows us what to look for in the summer night sky.*

The 'star' of the night sky at the moment is Venus. The planet can be seen, shining bright in the west, in the evening. It is really bright, at a magnitude of up to -4.2 (the lower the magnitude number, the brighter the object). On 9 July it will be close to Regulus in Leo, before being joined by a waxing crescent moon on the nineteenth.

Turning to stars rather than planets, the Summer Triangle (a name made popular by Sir Patrick Moore) can be seen in the south. It is three stars in a right-



angled triangle. Top left is Deneb, the main star and also the tail of Cygnus (the Swan), which looks like an extended cross. It is the nineteenth brightest star in the night sky (on a list that does not include our sun or the planets), even though it is thought to be over 1,500 light years away. At the other end of the constellation is Albireo, which when viewed through a telescope, reveals itself as a double star, one being gold in colour, while the other is blue-green.

Top right in the Summer Triangle is Vega, which is the constellation Lyra, it's only 25 light years away and is the fifth brightest star, (and close to zero magnitude which all other star magnitudes are based on). Interestingly, the pole star, the stars found due north or south, change over time. Currently the northern pole star is Polaris, but in 12,000 BCE it was Vega and it will be again in 14,000 CE. If you scan the area with binoculars, you will see a double star, Epsilon Lyrae, which is just northeast of Vega, if you use a telescope, you would see it further splits down into four stars and this is known as the double double.

Completing the triangle is Altair in the constellation Aquilla (the Eagle). It's 17 lightyears away and the twelfth brightest star. It's interesting that all three stars are of similar magnitude, (brightness), but Deneb is so much further away. It's 200 times the diameter of our sun and 196,000 more luminous, making it one of the furthest objects easily visible by naked eye.



# SCAN

Stour Community Awareness Network  
(Formerly Senior Citizens Action Network)

**Come and join us! We are a friendly group who meet every other month to share ideas and learn more about our local community services.**

Next Meeting: Tuesday 14<sup>th</sup> July 2026  
Speaker: **Ray Coyte, Shipston First Responders**

At: Townsend Hall, 52 Sheep Street, Shipston-on-Stour, CV36 4AE  
10am for free refreshments. 10.30am start, 12 noon finish.

If you require transport to the meeting, VASA may be able to assist. Call 01789 262889 or email [transport@vasa.org.uk](mailto:transport@vasa.org.uk).





Who can grow the **Tallest Sunflower?**  
Judging on **15th August**

**Shipston on Stour Rotary Club**  
To enter contact Fay Ivens  
01608 662133

## Shipston Library

# Coffee Morning

Regular event: Every 1<sup>st</sup> Thursday of the month

Local author:  
**Rita John**


Published in 2022 and 2024, two novels based on the author's upbringing tell tales of a woman's resilience against a backdrop of 1970s working life. Come and join us for a memorable talk and a chance to meet the author.

Thursday 2<sup>nd</sup> July 2026 10-11am

Free to attend

Free refreshments provided

Just drop in! No booking required.




# SCAN

Stour Community Awareness Network  
(Formerly Senior Citizens Action Network)

**Come and join us! We are a friendly group who meet every other month to share ideas and learn more about our local community services.**

Extra Meeting: Tuesday 4<sup>th</sup> August 2026  
Speaker: **Manuela Perteghella, Member of Parliament for Stratford-on-Avon**

At: Townsend Hall, 52 Sheep Street, Shipston-on-Stour, CV36 4AE  
10am for free refreshments. 10.30am start, 12 noon finish.

If you require transport to the meeting, VASA may be able to assist. Call 01789 262889 or email [transport@vasa.org.uk](mailto:transport@vasa.org.uk).

## Shipston High School

### A term of determination, community, and celebration

As we move through a busy and rewarding summer term at Shipston High School, it has been wonderful to reflect on the many ways our students continue to demonstrate resilience, generosity, and community spirit.

First and foremost, we would like to recognise our Year 11 students, who are currently in the midst of their GCSE examinations. This is a significant and often challenging time, and they have approached it with a positive and focused attitude. Many students have shown maturity and determination, and we wish them all the very best as they continue through this important stage of their education.

Looking ahead, we are excited to launch a series of fundraising activities in aid of Shipston Home Nursing, led creatively by our Head of PE, Sarah Davies. Inspired by the excitement of the World Cup, students will take part in a range of sporting events and challenges designed to bring the whole school together in a spirit of friendly competition and generosity.

As part of this focus on community, we are also looking forward to welcoming students from our local primary schools for an interactive STEM day centred on sustainability. This will provide a fantastic opportunity for younger pupils to take part in hands-on learning while building connections with our students and staff.

Together, these events will not only provide enjoyment and shared experiences, but also offer meaningful opportunities for our students to demonstrate their commitment to supporting



others and giving back to the local community.

We are excited to finish the term with one of the highlights of our school year: Enrichment Week. Taking place from 13–17 July, this week is dedicated to providing students with opportunities to develop new skills, grow in confidence, and engage with experiences beyond the classroom.

At the heart of Enrichment Week is something particularly important to us – strengthening the connection between our school and the local community. We will be holding a Community Day on Tuesday 14 July, where students will step beyond the school gates to contribute positively to the area we are so proud to be part of. We are inviting local residents, businesses, charities, and organisations to work with us to create meaningful opportunities for our students. There are many ways you can get involved, including:

- Offering community projects that students can support and contribute to
- Delivering workshops, talks, or activities to inspire and inform young people
- Providing donations of materials or resources
- Sharing ideas or support for staff-led enrichment activities

Whether you are able to share a skill, support a local initiative, inspire future career pathways, or simply help students feel more connected to their community, your involvement can make a real and lasting difference. Together, we can show our young people the value of collaboration, compassion, and community engagement – lessons that will stay with them long beyond their time at school. If you would like to get involved or have a project you think our students could support, please do get in touch with us at [info@shipstonhigh.co.uk](mailto:info@shipstonhigh.co.uk). Thank you, as always, for your continued support. We are incredibly proud to be part of such a strong and supportive community, and we look forward to working together to make this Enrichment Week a truly special experience for all.

## Shipston Primary School

### Caretaker wanted!

We have loved having Mr Aubrey be our cheerful, helpful caretaker but he will be leaving us at the end of the school year, meaning that we need a new caretaker. If you are interested in joining our lovely school, please apply here:

### Caretaker (To start in July 2026):

<https://teaching-vacancies.service.gov.uk/jobs/caretaker-0d236f87-706f-40b2-9154-5c1c1e4b728d>



### Year 6 tag rugby

Year 6 took part in a tag rugby festival with children from several other local schools. Although they did not win, they all had great fun learning a new sport and developing their team work skills.



Games were scored not only on how many tries were scored but also the manner in which children played the game: whether they supported and encouraged each other and played fairly, showing respect to the opposition and the officials. Huge thanks to all of the volunteers at Shipston Rugby Club for hosting such an enjoyable day. Congratulations to the teams from Quinton and Acorns who shared the trophy.

### Year 2 visit to Warwick Castle

Last week, Year 2 enjoyed exploring Warwick Castle as part of their 'Magnificent Monarchs' topic. They learned about Queen Aethelfledd and how she led the Mercians against the Viking invasion; about



how Queen Victoria invented afternoon tea; heard about how trebuchets were used to break sieges and saw majestic birds of prey. Many thanks to the parents who came and helped the children have such an enjoyable day.

## Shipston SCAN

At our May meeting we welcomed Emma Daniell, deputy Police and Crime Commissioner (PCC) for Warwickshire. The role of the PCCs is soon to be abolished, though it is still unclear how they will be replaced. Amongst other little known functions, the PCC works with young people in areas such as self-defence and knife crime awareness. Emma also referred to the volunteering opportunities for those who would like to be involved in roles such as helping those who need support while in custody. At the moment our local police are working on a shop watch scheme to counter shoplifting.

Our next meeting will be on 14 July when Ray Coyte from Shipston First Responders will be talking about resuscitation amongst other topics.

We have arranged an extra meeting for Tuesday, 4 August. Manuela Perteghella, MP for Stratford on Avon, will talk about the life of a member of parliament and about some local issues.

Both meetings will be in the Townsend Hall. Tea, coffee and biscuits available from 10am. The talks will begin at 10.30am and we normally finish around noon. And there is no charge at all. If you'd like to know a bit more, please ring me on 01608 662998. Please leave a message if I'm not in and I will ring you back.

Laurie Grove

## Fish 'n' Frolics

This will be the 14th year of Fish 'n' Frolics'. Each year it seems to grow and is now part of the annual festival scene in Shipston. It is a free entry community festival that the Shipston Angling club puts on for Shipston and the surrounding area.

The actual festival goes over two weekends, starting with the popular three-day angling event on the River Stour, the River Avon and the match pool at Aston Magna. This starts on 17 July and finishes on 19 July and is open to any anglers who want to have a go at festival fishing in a totally unique style that is typically Shipston.

The following weekend is when the fun starts. Friday 24 July is the first of the Junior days on the River Stour at the Sports Club, then again on 25 July. The final day is Sunday 26 July at Aston Magna where there will be junior matches as well as the tuition. All free entry, bait and tackle provided.

The music festival is on 25 July with loads of live bands, music and fun. There will be food, a bar, entertainment, ice-cream, face painting etc. This is also free entry and a great family event.

Stuart Fleming

## Probus

Stories from the Shipston Union Workhouse, or Minute Books – A Surprisingly Exciting Read! By Maggie Wood.

Maggie is a former Keeper of Social History at Warwickshire Museum and no stranger to Probus. Once again members



were entertained with a fascinating account of the social history of our town.

Maggie explained how she had traced the story of some of the original inhabitants of Shipston's old workhouse by close analysis of 'Minute Books', which are the official records of the meetings of the Board of Guardians, the elected committees who were responsible for local workhouses and administering poor relief. Part of the original workhouse buildings just off Darlingscote Road in Shipston still remain, now modern accommodation, and the old workhouse chapel is now the Catholic church.

The Shipston Poor Law Union, consisting of 34 local parishes, built the workhouse in Shipston in 1837 to house 300 inmates. The aim was to provide basic assistance to the destitute and orphaned; family members were split up, and inmates were subjected to hard labour. In 1885 the vicar of Chipping Campden wrote to complain about the state of an inmate's coffin, poorly made and entirely open at one end! Later the attitude changed somewhat, buildings and conditions improved with provision of an orchard, pigs, and children's swings. In 1891 workhouse uniforms were abandoned, and records show assistance was given to a widow with a crippled son for an artificial leg.

A sad example is illustrated by a letter from the vicar of Tysoe requesting a placement for the daughter of a parishioner who was pregnant, but the grandmother had 13 children of her own and a new baby was one too many! Initially the request was refused by the Guardians on the grounds of encouraging immorality.

Support for the poor and distressed also came from wealthy local individuals. Mary Townsend was married to the local MP. She had no children of her own but took an interest in improving the workhouse conditions; a suggestion by her for a playroom for girls was rejected by the Guardians. Twice a year Mary entertained children at Honington Hall. In 1886 she opened an orphanage near Honington for young girls from the workhouse. This was a generous gesture but with the downside it could mean separating young girls from their workhouse families.

From 1887 children were able to attend the Shipston Board school in Church Street, where they received a basic education before moving on to an employer, for example, a local baker or, in the case of Joseph Hyatt, sent for domestic service in London. Girls could be sent to 'training homes' where they learnt domestic duties such as laundry work. Some did well, one was appointed as 'second laundry maid' earning £14 pa. Others did not – a placement in Stratford ended in dismissal!

The future for others was emigration – the parents of a family of six siblings called Massey emigrated to Canada leaving grandmother in charge, but granny died and the children entered the workhouse in 1881. In 1890 three of the girls joined their mother in Canada. The minute books record that the Board agreed to spend £10 to enable another to join her Canadian family. She duly travelled by train to Liverpool, alone, to board the 'SS Sardinian'. Eventually she married someone, also originally from Warwickshire, and they became landed farmers, something that would not have been possible had they remained in England.



If you feel Probus could appeal to you, then why not give us a try as our guest? Enjoy a free lunch and no initial commitment to join, entirely your choice! Please contact Chris Skeath on 01608 661561 or email [cmskeath@hotmail.com](mailto:cmskeath@hotmail.com) for further details.

## Stour Valley Lions

The town did us proud for the Best Dressed Window competition to celebrate the Duck Race. It was



a hard decision for the judges, and the results were very close, but in the end the winner was The Richard Harvey Collection.

The Stour Valley Lions Cinema film in May was *His for Hawk* and in June it

was *Song Sung Blue*, an enjoyable biographical musical drama about a real-life Midwestern couple who formed a joyous Neil Diamond tribute band.

On Sunday 31 May, members spent the morning weeding and tidying the Gyratory Garden in Shipston. What a difference they made.

The Lions have benches in various locations around Shipston. Some are ageing and we are considering replacement options.

Would you like to sponsor a bench in memory of a loved one by dedicating a bench to them? Each bench would have a brass plaque with details engraved on it of the person who you wish to remember. Each bench would cost £700. If you would like to discuss this, please contact us on our enquiry line, 0345 833 2835, or email us via [enquiries@stourvalleylions.club](mailto:enquiries@stourvalleylions.club)



Dates for your diary: Saturday 18 July Shipston Lodge Summer Fete, 12.30-4pm, Tileman's Lane. Saturday 8 August: Bingo – 6.30-10.30pm, Townsend Hall.

Stour Valley Lions always welcomes new members. If you're interested in joining, or you'd like to help us with our events, please send an email to [enquiries@stourvalleylions.club](mailto:enquiries@stourvalleylions.club) or call us on 0345 833 2835.

We meet at the Catholic Church Hall, Darlingscote Road, Shipston, 6.30 for 7.00pm, on the second Tuesday of each month.

## Women's Institute

The meeting held on 3 June began, unusually, with business, so that the remainder of the evening could be given over to the fun bit. Members have been busy and a recent recruitment drive was a success. A Strawberry Tea garden party was held on 7 June in a member's garden, another member is fundraising for



a women's charity and will be driving a tank in July, and a visit to Waterperry Gardens is planned for August.

Jackie Allen then talked to the meeting about her mobile fashion boutique. The pandemic forced her to close her three fashion shops, so she had the bright idea of taking fashion to her customers instead of them coming to her. Jackie brought her travelling boutique with her and produced a huge range of summer clothing. She showed the meeting how to combine garments into a capsule wardrobe using only one suitcase for a mythical summer cruise. She emphasised comfort and practicality and always produced a stylish and desirable outfit. The introduction of modern stretch fabrics and non-crease fabrics has been revolutionary. Clothes can be washed and drip-dried and the days of always taking a travelling iron on holiday are well in the past. Two members modelled the outfits and showed how a little thought about assembling an outfit and the various uses to which a particular garment can be put, can save a lot of expensive mistakes.

Jackie urged the meeting not to be afraid of experimenting and always bear proportion and body shape in mind. Clever use of accessories can change the nature of an outfit from casual to more formal, and a well chosen scarf can lift a rather bland outfit to a very stylish one in the few minutes it takes to drape the scarf. Jackie also urged the meeting not to be afraid of following fashion trends, but always, however, to bear in mind what will suit them, their lifestyle, and their body shape.

The next meeting will be on Wednesday 1 July in the Catholic Church Hall, Darlingscote Road, which will be a social evening on the theme of Oh, I do like to be beside the seaside.

## The Townsend Hall Needs You

Hopefully, as a Shipston resident, you will be aware of the Townsend Hall in Sheep Street and will have attended one of the many activities hosted there.



The Townsend Hall is a community facility, run by a charitable trust led by a management committee of volunteers. It hosts live music, drama, dance, sporting activities, exercise classes, talks, children's events, community meetings, charity events, parties and much more and, thanks to its charitable status and fundraising activities, we are able to offer all this at affordable rates to the whole community of Shipston and surrounding areas.

With a now reduced number of committed trustees, it is becoming more of a challenge to keep the show on the road. To enable this facility to stay vibrant for the need of the Shipston growing community, we are urgently looking for support. There are various ways to get involved either as a trustee or volunteer. Please help us to keep this amazing community facility alive, busy and delivering what our lovely town needs. You can call or text us on the following number 07807 838953 or email [info@townsendhall.com](mailto:info@townsendhall.com) Our AGM for 2026 is on Tuesday 7 July at 7pm at the Townsend Hall.

Jenny Glover, Chairman

## County Council

The South Warwickshire Local Plan is a complete nightmare and that is due to the decision going back to Warwick District to discuss further, and that is Green driven. I hope that we do not end up governed by central diktat but unless SDC find a five-year land supply we are in trouble.

Anyway, on brighter things, the Shipston Health and Wellbeing Partnership goes from strength to strength working to the sort of goals which are the same as WCC for health. Shipston is an amazing torchbearer for how this is done on the ground and I am really proud to be part of it.

We have big changes coming locally with our schools. A new head at both the Primary and the High School. I am pretty excited for our kids to be having such enthusiastic and committed heads joining at the same time. Maybe I should take them both out for a drink? We will be talking about school spaces after this publication, but I'll update you via the Shipston Noticeboard as to any major changes. The way these things are calculated are fairly robust for 12 months after which all bets are off on the numbers, in my opinion.

Apparently there is a difference of opinion as to the degradation of land under solar panels about which I wrote last month. I did research on soil compaction in a former life...the installation causes this and the ongoing impact of runoff, biodiversity reduction due to lower photosynthesis of plants and therefore reduced aeration of the soil. No studies of the 30 year impact have taken place, but if you look at those which do exist for shorter periods there is severe impact. I am happy to stand by my point from last month!

As I write, an issue is being raised about consultations...what do you think of consultations? Are they worth it? Or is it time for those of us elected to make decisions, get back to basics (apologies to John Major) and make difficult choices, so that things work better and faster for all of us? If you don't like it we can be voted out. Maybe I am harking back to the days pre-Blair and pre-quango.

As summer approaches, may I flag up to you the HAF (Holidays Activities and Food)? This is funding and services available to kids who get free school meals to give fun summer experiences and lunch! Please do apply.

Do you need help with housing, welfare or social care? I am fully aware that navigating these systems is not easy. Happy to help!

Come and have a cuppa and a chat. Get in touch.

### Jo Barker

County Councillor, Shipston Division

077489 68712 | [jobarker@warwickshire.gov.uk](mailto:jobarker@warwickshire.gov.uk)



## District Council

The South Warwickshire Local Plan has reached a critical stage, and Shipston now faces the prospect of more than 800 new homes being proposed around the town after a consultant's report expressing viability concerns led to pressure for higher housing numbers across the district. The only development around Shipston that is not included in the plan is the 1,150 proposed homes on the Fell Mill site. However, this is still vulnerable as the developers may go to appeal.

While we accept that some growth is now inevitable, there is a strong feeling in the Town that any expansion must be matched by proper infrastructure and better planning, not simply more housing allocations. Olivia and I are therefore asking for changes to the plan before it is finalised. First, we want the land next to Tilemans Lane reserved for employment rather than more houses, as this is the only realistic land left for future jobs and is already identified for that purpose in the neighbourhood plan. We are also calling for the removal of the proposed housing at Shoulderway Lane, from the draft plan, on the grounds that it is the least sustainable of the sites proposed around Shipston.

Traffic in the Town Centre is another major concern. We want the findings of the Shaping Travel in Shipston report, which recommends improvements to traffic flow, to be reflected in the final plan. We would also like a cycling and pedestrian path along the old tramway route between Stratford and Shipston to be included. This is about far more than leisure; there have been several fatal accidents on the A3400 corridor in recent months and one of these was a cyclist.

We are also asking for a sixth form college at the High School site, proper planning for wastewater treatment capacity, including the possibility of another sewage treatment plant, and the reinstatement of Shipston's fire station as a full first-response service. Since the end of last year, the station has operated only as a resilience station, with initial emergency cover coming from elsewhere, a change which has caused a lot of concern.

If Shipston is expected to take significant growth, then jobs, transport, education, sewage capacity and emergency services must be planned alongside it. This is not opposition for its own sake, but a call for a fairer and more sustainable plan for Shipston's future. We are meeting the Head of Development at the District Council to discuss these improvements to the plan and should know by early July if they have been incorporated.

### Dave Passingham

District Councillor, Shipston South

07752 562114 | [dave.passingham@stratford-dc-gov.uk](mailto:dave.passingham@stratford-dc-gov.uk)



## Your town councillors



### Richard Walters, Mayor

e: richard.walters@shipstontowncouncil.org



### Michelle Kelly, Deputy Mayor

e: michelle.kelly@shipstontowncouncil.org



### Tony Booth

*General Purposes and Communications Working Group Chair*

e: tony.booth@shipstontowncouncil.org



### Gerry Kelly

*Planning Committee Vice Chair*

t: 07471 687720

e: gerry.kelly@shipstontowncouncil.org



### Ian Cooper

*Finance Working Group Chair*

t: 01608 663785

e: ian.cooper@shipstontowncouncil.org



### Paul Tesh

*Planning Committee Chair*

t: 07711 433566

e: paul.tesh@shipstontowncouncil.org



### Jo Barker

t: 07748 968712

e: jo.barker@shipstontowncouncil.org  
(for town and county matters)



### Hilary Kelly

*Environmental Working Group Chair*

e: hilary.kelly@shipstontowncouncil.org



### Chris Howarth

e: chris.howarth@shipstontowncouncil.org



### John Williams

e: john.williams@shipstontowncouncil.org



### Steve Crockett

e: steve.crockett@shipstontowncouncil.org



### Vanessa Benjamin-Smith

*SAFAG Chair*

e: vanessa.benjamin-smith@shipstontowncouncil.org



### Vivien Walden

e: vivien.walden@shipstontowncouncil.org



## Useful contacts

Community Links Transport	01789 264491
Shipston Library:	0300 5558171
- 24/7 renewal line	01926 499273
Highways customer services	01926 412515
Severn Trent Emergency Line:	0800 7834444
Shipston Volunteer Transport Scheme (VASA)	01789 262889
Shipston Leisure Centre	01608 662354
Shipston Medical Centre	01608 661845
- Out of hours	111
Shipston Link (local transport)	01386 593446
Shipston Recycling Centre	01926 412593
Stratford District Council	01789 267575
Townsend Hall	07514 704057
Warwickshire County Council	01926 410410
UCHW Hospital	024 7696 4000
Warwick Hospital	01926 495321
Samaritans	116 123
Food Bank	07386 352456
<b>Local police (non emergency)</b>	<b>101</b>

Shipston Police Safer Neighbourhood:  
PC1508 Sid Hammond – 07967 303185  
PCSO Katie Brooks – 07870 978973

### Churches of Shipston:

Stour Valley Baptist	01608 664876
Our Lady & St Michael	01608 685259
St Edmund's	07951 064778
Methodist Church	01295 257193

### Shipston-on-Stour Town Council

New Clark House, West Street, Shipston-on-Stour, CV36 4HD

### General Enquiries

t: 01608 662180 e: enquiries@shipstontowncouncil.org



### Town Clerks

e: clerk@shipstontowncouncil.org



### County Council Contact:

#### Councillor Jo Barker

t: 07748 968712 e: jobarker@warwickshire.gov.uk



### District Council Contacts:



#### Dave Passingham (Shipston South)

e: dave.passingham@stratford-dc.gov.uk



#### Olivia Hatch (Shipston North)

e: olivia.hatch@stratford-dc.gov.uk

t: 07973 846605



## Something exciting to share?

If you have a story that's relevant to Shipston residents, please contact the editor, Laura Parker, by email: [forum@shipstononline.org](mailto:forum@shipstononline.org) or, if you don't have email access, on 07989 530069

To request posts on the council's Facebook page, contact [enquiries@shipstontowncouncil.org](mailto:enquiries@shipstontowncouncil.org)

### Forum copy deadline:

#### Second Monday of the month

– but the sooner you can notify the editor of a potential story the better.

The Shipston Forum is produced monthly by the Town Council.

While every effort is made to ensure information is accurate, the Town Council and its contractors do not accept responsibility for material submitted by readers or third parties and does not endorse any organisation or event publicised. Contributions may be edited to fit available space.



**SHIPSTON PROMS 2026**  
**MUSIC for ALL**  
**MUSIC FESTIVAL**

HEADLINE SPONSORS: RYSE 3D, SHIPSTON BOOKFEST

SHIPSTON-ON-STOUR, WARWICKSHIRE  
**19 JUNE - 4 JULY**  
 From **CLASSICAL** to **HEAVY ROCK**

**A 5 STAR FESTIVAL OF MUSIC MAKING FOR THE WHOLE COMMUNITY!**

**LAST NIGHT HEADLINERS!**  
 ★ THE DROPOUTS  
 ★ TEXAN PEACOCKS  
 ★ ORANGE RIVER REMEDY  
 PLUS  
 ★ SHIPSTON INTRODUCING ACTS

**IBIZA-ON-STOUR DANCE PARTY - SATURDAY 27 JUNE**  
**NOW AFTERNOON & EVENING SHOWS!**



**SHIPSTON 2026 BOOKFEST**

# FAMILY EVENTS

**NICOLA BAKER**



**2.30pm | Sunday 20 Sept**  
 St Edmund's Church

FREE event in partnership with Shipston Library.  
 Pre-booking required.

**ALEXANDER ARMSTRONG**



**3.30pm | Saturday 26 Sept**  
 Shipston High School

Tickets from £8.

**MORE INFO**



[www.shipstonbookfest.org](http://www.shipstonbookfest.org)  
 @shipstonbookfest



**MUSIC FESTIVAL**

# Fish n Frolics

**25<sup>TH</sup> JULY 2026**  
 SHIPSTON SPORTS CLUB - FREE ENTRY  
 2PM TIL LATE

**Hosted By Festipaul**



LIVE MUSIC - FOOD STALLS - DRINKS BAR - RAFFLE

**LINE UP**  
 The Score, **Danny Ansell**, **Ruth Kelly**  
**ABBA Ever After - The Tribute**, The Mixtapes  
 Smashed Vinyls, Those Fine Strangers



**SHIPSTON LODGE**

# SUMMER FETE

**18th July 2026**  
**12.30pm to 4.00pm**

**Tilemans Lane, Shipston on Stour**  
**CV36 4QG**

 Supported by Stour Valley Lions